



WHITE DESERT  
ANTARCTICA



# VIRGIN SUMMIT

WHICHAWAY OASIS | ANTARCTICA  
2021 - 2022



On this 8-day experience you will fly into the interior of Antarctica on a private jet and stay at our beautiful camp at Whichaway Oasis.

The highlight of the trip is to summit a Virgin Peak in the Drygalski mountain range. This is pioneering adventure at the end of the world.

PRICE PER PERSON: US\$52,000

EXCLUSIVE CHARTER (12 PLACES): US\$624,000



33° 56' 29" S 18° 27' 40" E

# START POINT

CAPE TOWN, SOUTH AFRICA

Often tipped as one of the most beautiful cities in the world, Cape Town is home to award-winning vineyards and stunning ocean vistas.

We will host a safety briefing the day before your scheduled flight where our staff will explain all kit requirements, assist with any last-minute preparations and update you as to the latest weather forecasts in Antarctica.







CAPE TOWN  
SOUTH AFRICA

WHICHAWAY OASIS

WOLF'S FANG RUNWAY

# FLIGHTS

FLIGHT TO WOLF'S FANG,  
ANTARCTICA: 5 hours

MAXIMUM CLIENTS: 12

AIRCRAFT: Gulfstream G550





# TRAVEL

## SOUTH AFRICA TO ANTARCTICA

We travel in uncompromised comfort across the mighty Southern Ocean in a Gulfstream private jet. During the 5-hour flight, the African night turns to day as we soar over thousands of icebergs and pass into 24 hours of continuous sunshine. Destination: Wolf's Fang Runway.



CLICK TO VIEW LANDING ON WOLF'S FANG BLUE ICE RUNWAY



71° 39' 43" S 9° 29' 03" E

## WOLF'S FANG RUNWAY

Our runway is overlooked by one of the most magnificent and iconic mountains on the entire continent, so named 'Wolf's Fang' by the early Norwegian explorers. Once on the ground, you will be surrounded by kilometer-high monoliths of rock that rise vertically from the ice.





● Gulfstream G550

● Basler BT-67

● Bell 412 Helicopter



Once in Antarctica, you will be transferred by our Basler BT-67 to our luxury camp at Whichaway Oasis. Flight time: 30 minutes.

As part of our responsibility towards conserving Antarctica, all emissions from our operations, including all flights to, from and within the continent, are offset by fully-accredited carbon-neutral schemes.





Condé Nast  
**Traveler**

*"Whichaway Oasis must count as one of the most exclusive stays in the world."*

70° 45' 49" S 11° 36' 59" E

## WHICHAWAY OASIS





On the edge of the Great White Continent lies the Schirmacher Oasis, an ice-free area that contains over 100 freshwater lakes. This is the site of our unique camp - Whichaway Oasis.

Whichaway consists of a collection of hi-tech polar domes set on the shores of a frozen lake and encircled by a magnificent 60-metre (200-foot) icefall. It is warm and comfortable, and the perfect home base for daily activities or when you want to just simply relax.

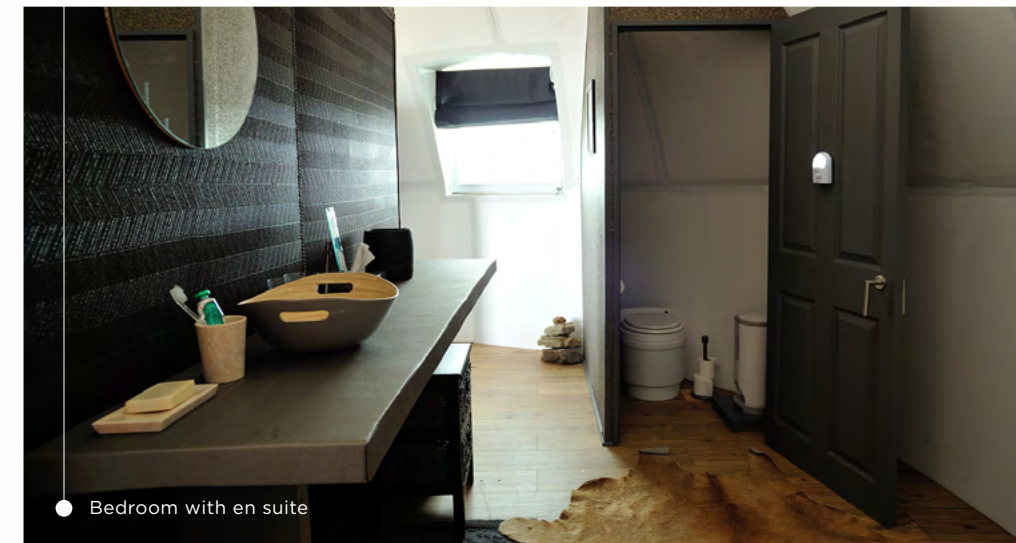


[CLICK TO VIEW VIDEO OF WHICHAWAY OASIS](#)





*"Whichaway Oasis offers the perfect balance between polar functionality and luxury camp comfort."*  
Rick Garratt, CEO, Home Choice



● Bedroom with en suite



● Shower pod

Our camp consists of seven heated and state-of-the-art bedroom pods that are designed for two guests to enjoy in comfort. At just over 6m (20ft) in diameter, they are spacious with a writing desk, wash area and toilet.

For guests travelling independently, the pod can be partitioned for privacy.



Lounge



Reception



The rest of the camp comprises a shower pod, kitchen and three centralised pods that make up the reception, lounge and dining room. This is where our experienced team of chefs, hosts and guides will take care of every detail for you, allowing you to focus on enjoying your adventure.

While the exterior of our pods is made from cutting-edge materials, the interiors have a relaxed, old-world feel that harks back to the golden age of Antarctic exploration.



Dining Room

*"I never expected to find such delicious food and wine in such a remote place. The chef was nothing short of a miracle worker!"*  
Cathy Mackenzie, Guest



After a busy day of activities, you'll be sure to work up an appetite. Our hearty breakfasts, elegant lunches and three-course dinners will mean you are well fed whilst staying at the end of the world.



Our chefs use the best South African produce to create meals that are full of flavour and sophisticated without being fussy. The wines come from a selection of the finest Cape vineyards, whilst the bread is freshly baked and the coffee freshly ground.



Our service is welcoming, personal and thoughtful, and takes into account each guest's dietary requirements.



A photograph of an ice cave with a stream and people. The cave's interior is illuminated with blue light, highlighting the intricate textures of the ice walls and ceiling. A narrow stream flows through the center of the cave. Several people, dressed in winter gear, are visible in the distance, some standing on the ice banks and others near the stream. The overall atmosphere is serene and majestic.

DAILY ACTIVITIES AT WHICHAWAY OASIS





[CLICK TO VIEW VIDEO OF ICE TUNNEL](#)



With only 12 guests on each adventure, our professional guides will ensure that you are always safe and well looked-after, and that you get the most out of your time.

Your activities can be as adrenaline-fuelled or relaxed as you like: not keen on climbing, fat biking or abseiling? Then perhaps a picnic followed by a sauna and a massage would suit. The choice is yours.







Condé Nast  
**Traveler**

*"The logistics that support this 12-guest refuge would test a space mission."*

Between rugged mountain ranges and spectacular frozen waves of ice, our guides will expand your horizons and push you only as far as you want to go. Our philosophy is simple - do as much or as little as you like. After all, it's your adventure!





## SCALE A VIRGIN SUMMIT

The Drygalski mountains are home to a handful of unclimbed peaks, a modern day rarity in today's world of exploration. We will traverse to the base of these mountains where our guides will have set up the camp for the expedition. After a night spent out on the glacier we will take advantage of the 24-hour sunlight and trek into the mountains to summit a peak where no human has stood before.







*"Mother nature's raw beauty was breathtaking. We interacted with her, trekking, climbing and venturing into the amazing tunnels of ice."  
Marshal Bernes, Guest (2018)*



# WELLNESS

A trip to Antarctica is the perfect opportunity to rest, recharge and recover from the hustle and bustle of everyday life. Not only are our team ready to lead you through the landscapes of Antarctica, but they are also on hand to guide you in relaxation and meditation techniques.

Newly added for the 2021/22 season, our sauna and wellness pod are perched beside a serene freshwater lake, whose views will inspire you during daily meditation and yoga sessions.



*"Every once in a while, I think of the thousands of penguins, our home at Whichaway Oasis, the food and the challenges I conquered. When my day gets beyond stressful... I smile!"*  
Karen Gosling, Guest (2018)



**Forbes**

*"Antarctica, the safest place to visit in 2020 and beyond."*

## YOUR SAFETY

For all its beauty, Antarctica can be a challenging environment, with low temperatures, strong winds and high altitudes. We believe the best way to protect you is through our staff and we are absolutely uncompromising about the experience and expertise of our people.

All our mountain guides have completed the strenuous 5-year UIAGM qualification, while each camp has its own fully-qualified trauma doctor and accompanying medical kits. Our chief pilot has 10 years of experience flying in Antarctica with over 18,000 hours of logged flight time.

Tracking, satellite communications and mutual Search & Rescue agreements are all part of White Desert's comprehensive safety policies. Furthermore, by operating our own aircraft, we also have the speed and flexibility to arrange an evacuation back to Cape Town in the unlikely event that one should become necessary.





# ENVIRONMENT

White Desert believes that responsible tourism is a genuine force for good and supports Sir David Attenborough's stance on the transformative power of wilderness travel: *"No one will protect what they don't care about, and no one will care about what they have never experienced"*.



**Camp** - As a temporary eco-camp, our whole operation can be dismantled and removed without a trace.



**Carbon neutral** - White Desert was the first aviation operator in Antarctica to be entirely Carbon Neutral, a status the company has held since 2007.



**Waste management** - We keep waste to a minimum by repackaging all consumables before we bring them to Antarctica, while at the end of the season, all solid waste is shipped back to South Africa for recycling or responsible disposal.





## TRAVEL DETAILS

**GUESTS: 12 MAXIMUM**

**DATES: JANUARY 2022**

**FITNESS: NO SPECIFIC LEVEL REQUIRED**

**FLIGHT TO ANTARCTICA: 5HRS**

**PRICE: \$52,000 per person**

### INCLUDED

1. Safety briefing (return transfers provided)
2. Return transfers for Antarctica flights.
3. Return flight to Antarctica (inc. a 30kg baggage allowance).
4. All accommodation, food and drink (including all alcohol) in Antarctica.
5. All guiding fees, support of field guides and logistics staff.
6. The use of certain items of polar clothing, as denoted on equipment list.
7. Payment by White Desert Ltd of a 'Carbon Tax' for offsetting emissions created by all logistics associated with Antarctic travel.

### EXCLUDED

1. Commercial flights to and from Cape Town, South Africa.
2. Accommodation and meals whilst in Cape Town.
3. Polar clothing (you will be sent a tailored kit list in advance of your trip to assist you with purchasing items if required).
4. Comprehensive insurance cover. (White Desert staff can advise you as to the appropriate cover required.)
5. Additional expenses incurred in Cape Town due to any delay.
6. Additional baggage costs over the agreed amount.
7. Cost of the use of a satellite phone whilst in Antarctica.





# FULL ITINERARY

## DAY BEFORE DEPARTURE

White Desert will host a safety briefing in Cape Town. This is where we will check all your polar clothing and prepare you for your flight south.

### DAY 1

We fly over thousands of icebergs on our 5-hour flight across the Southern Ocean to Antarctica. During the flight, we enter the Polar Circle and encounter the continuous daylight of the Antarctic summer.

After landing on the ancient blue ice of the runway, you will transfer to our camp at Whichaway and take a gentle hike around the Oasis.

### DAY 2

Settle into Whichaway Oasis and do as much or as little as you like each day. Activities range from yoga, massages and gentle treks to exploring the incredible ice waves, summiting a nunatak, ice climbing and even abseiling!

On quieter days, you'll hear talks from our polar explorer staff about some of the lesser-known history of Antarctica and their world record-breaking expeditions.

### DAY 3

Setting out early in the morning, we will fly to the Drygalski mountains and traverse by foot and Skidoo to the base of the Drygalski range. The 20km route will journey over glacier and across numerous Nunataks. Arriving in the early afternoon we will have time to take the scenery in and check equipment for the next day.

### DAY 4

Summit Day. The journey to the summit will be through a dry valley carved out by the glacier and then up on to rocky ridge that travels to the peak. There, true essence of exploration is palpable, as no human has stood at this point before.

Return to basecamp where you will have a hearty meal and celebrate the achievement with a toast of champagne to celebrate such an achievement.

### DAY 5

The return trip will be by foot and skidoo with a stop half way to put your ice climbing skills to the test. The wind scoops around the nunataks make for the perfect testing ground for new found ice climbing skills.

We fly 20minutes back to Whichaway Oasis where the evening is spent celebrating this special accomplishment.

### DAY 6

We spend the day exploring the ice waves below our camp, delving into the series of ice tunnels that are as surreal as they are beautiful.

Then you'll be off on an Arctic Truck safari, winding your way through the snow and ice to an incredible vantage point where you can take in the panoramic view over the waves that you have just explored.

### DAY 7

An adventurous hike along a winding cliff face affords guests stunning views over pressure ridges of ice that have been folded over millennia by the ocean.

Our world-class mountain guides will lead you on this challenging hike, ensuring your safety at all times.

### DAY 8

The flight out of Antarctica will be the last of your enduring memories of the great White Continent before you dive back into the vibrant energy of Africa. You will be transferred to your hotel where you will have a chance to relax and reflect on your Antarctic adventure!

This itinerary is entirely subject to weather conditions in Antarctica and is meant as a day-by-day guide of what guests can expect. Exact dates and types of plane may vary.





  
WHITE DESERT  
ANTARCTICA



JOIN US ON AN UNFORGETTABLE JOURNEY. COME EXPLORE.

[INFO@WHITE-DESERT.COM](mailto:INFO@WHITE-DESERT.COM) +1 815 534 4533