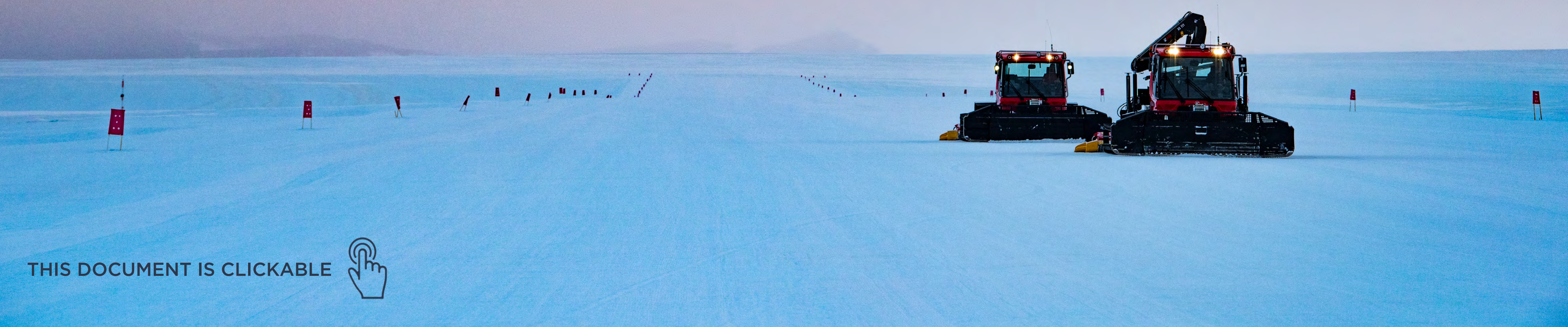




WHITE DESERT
ANTARCTICA

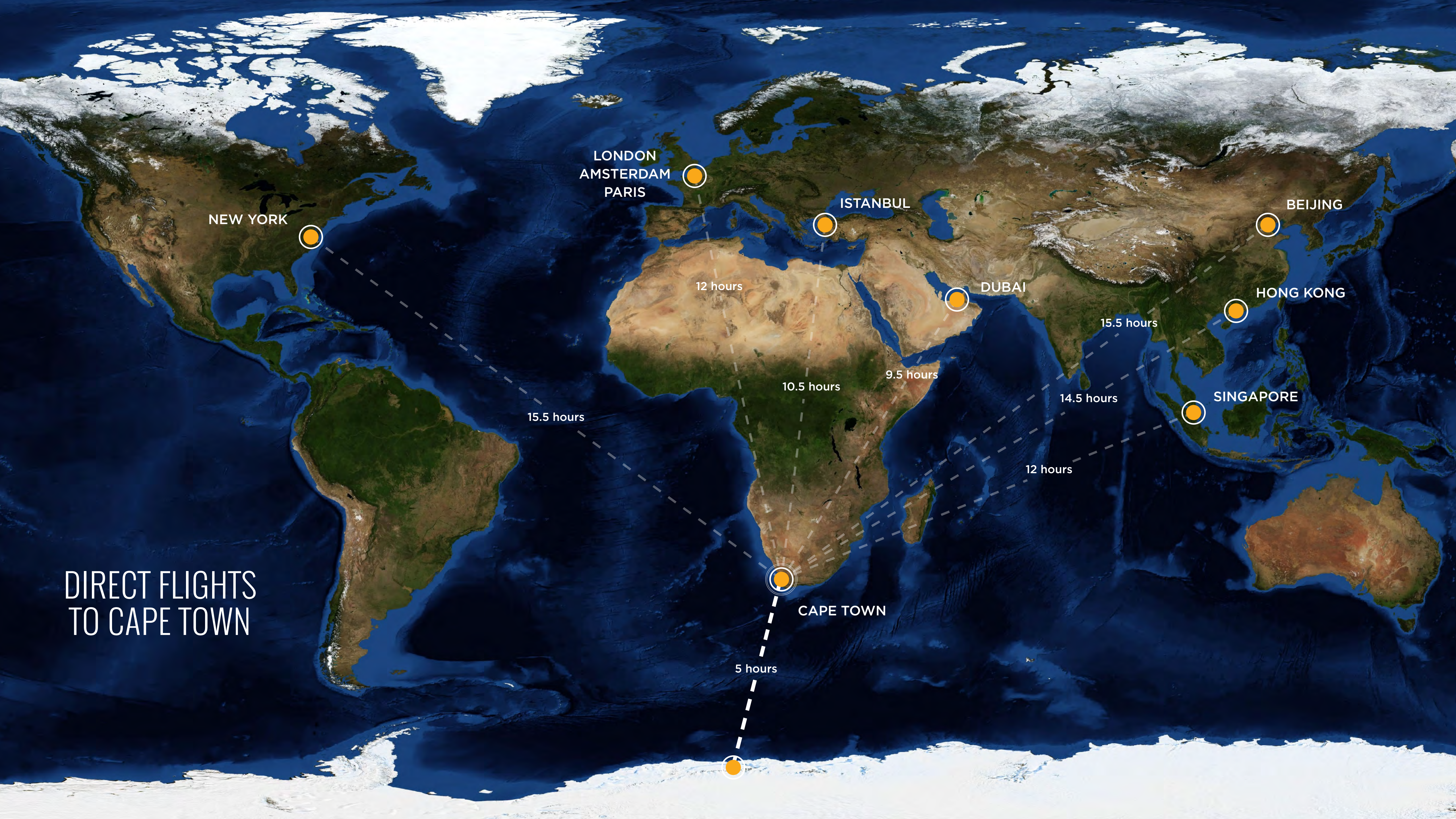


THIS DOCUMENT IS CLICKABLE



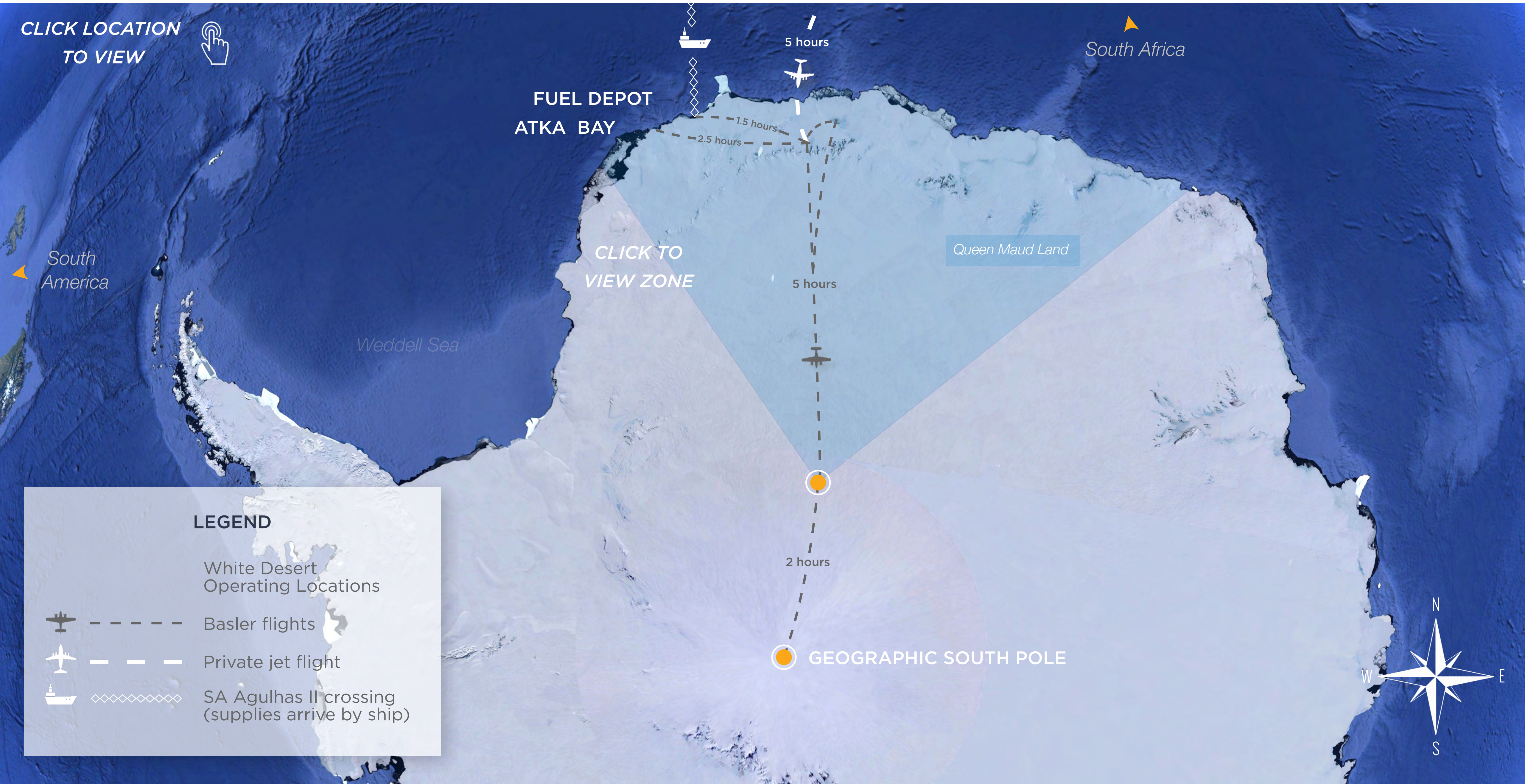
LOGISTICS - ANTARCTICA

DIRECT FLIGHTS TO CAPE TOWN



ANTARCTICA - WHITE DESERT OPERATIONS

CLICK LOCATION
TO VIEW



LEGEND

White Desert
Operating Locations



Basler flights



Private jet flight



SA Agulhas II crossing
(supplies arrive by ship)

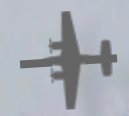


QUEEN MAUD LAND, ANTARCTICA - WHITE DESERT AIR ROUTES

CLICK LOCATION
TO VIEW



Cape Town - South Africa



2.5 hours

30 minutes

1.5 hours

2.5 hours

CLICK TO
VIEW ZONE

LEGEND

White Desert Operating
Locations



Science Bases



Basler flights



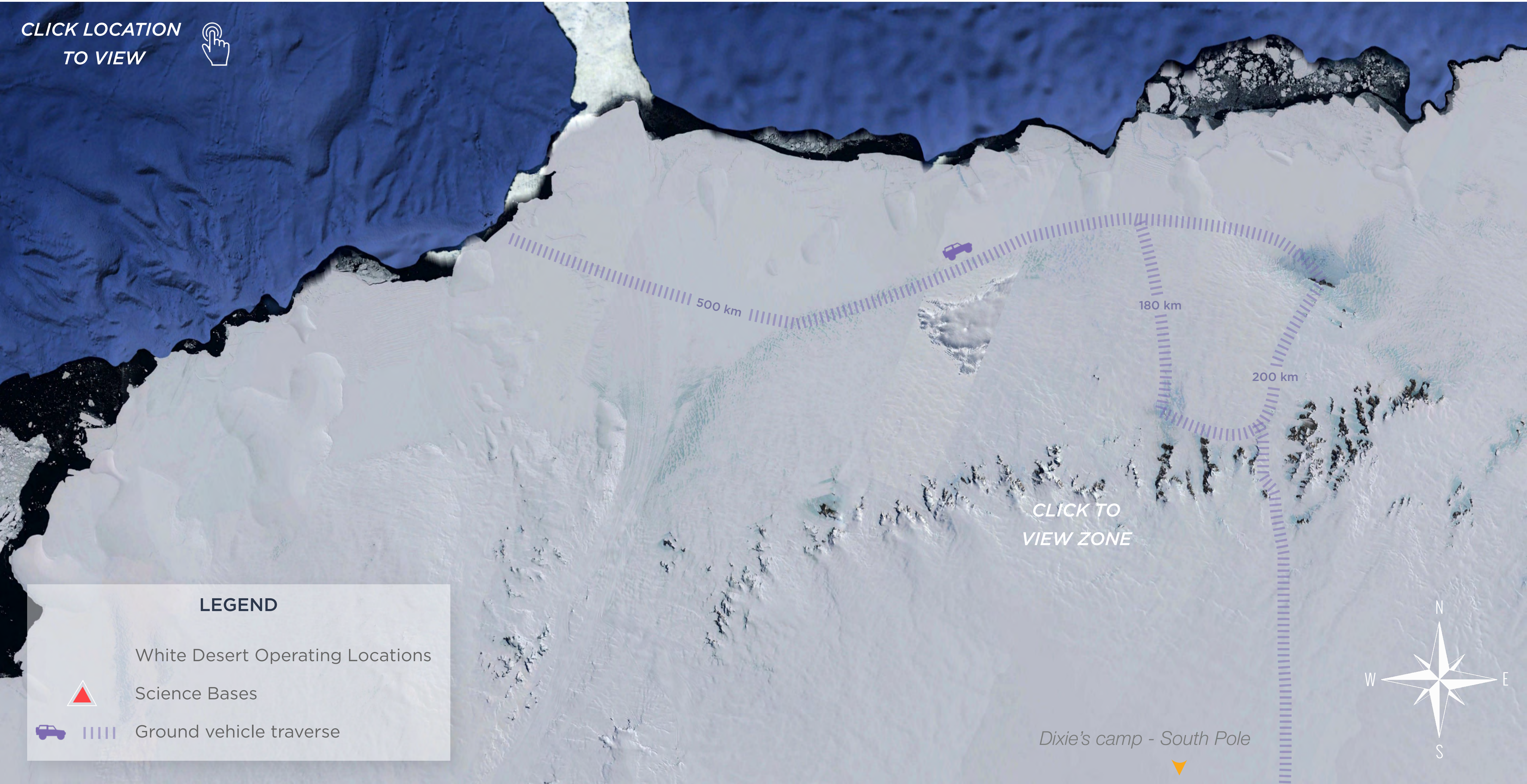
Private jet flight

Dixie's camp - South Pole



QUEEN MAUD LAND, ANTARCTICA - WHITE DESERT GROUND ROUTES

CLICK LOCATION
TO VIEW



LEGEND

White Desert Operating Locations



Science Bases



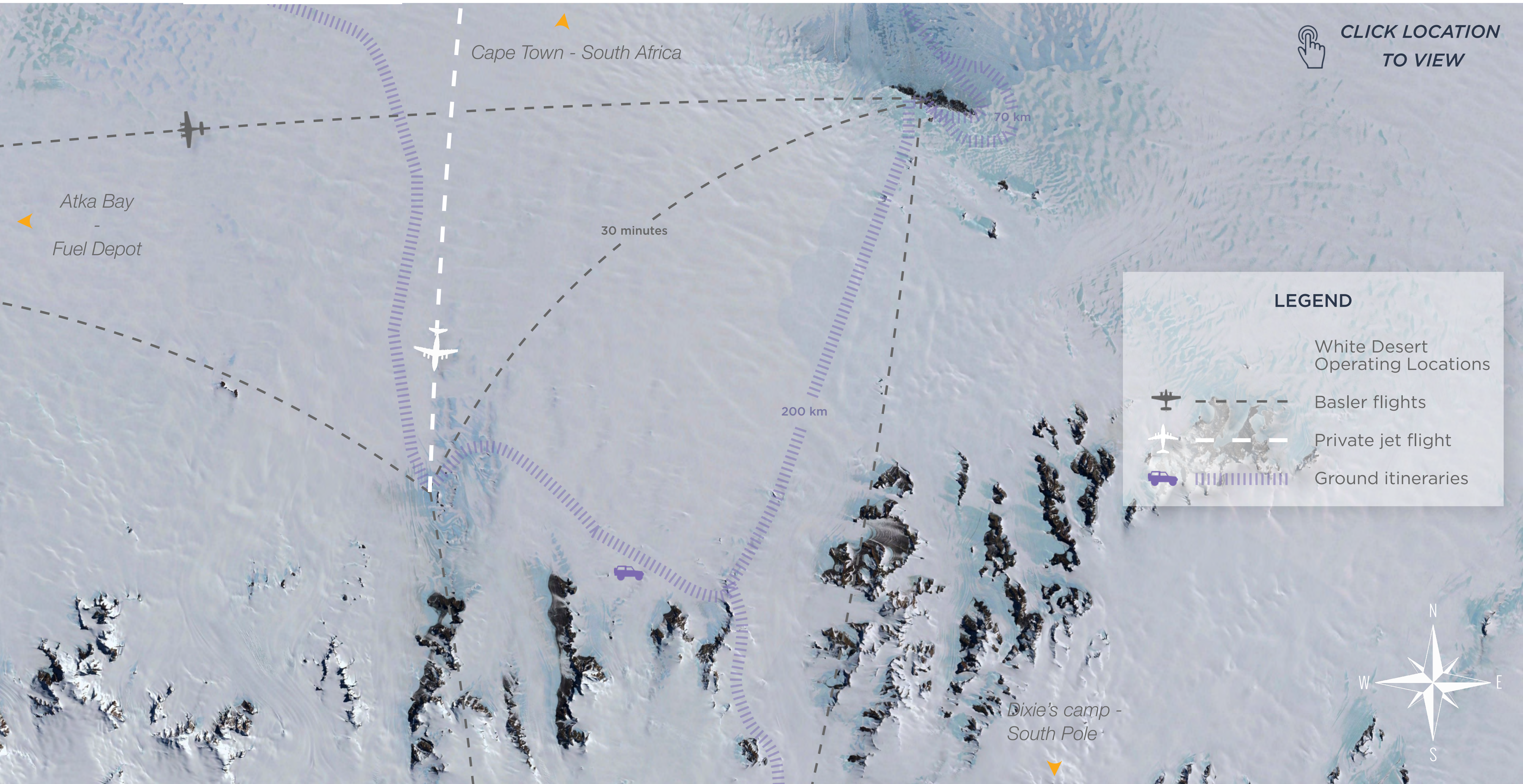
Ground vehicle traverse

CLICK TO
VIEW ZONE

Dixie's camp - South Pole



QUEEN MAUD LAND, ANTARCTICA - WOLF'S FANG & WHICHAWAY ZONE



CLICK LOCATION
TO VIEW

Atka Bay
-
Fuel Depot

Cape Town - South Africa

30 minutes

70 km

200 km

Dixie's camp -
South Pole

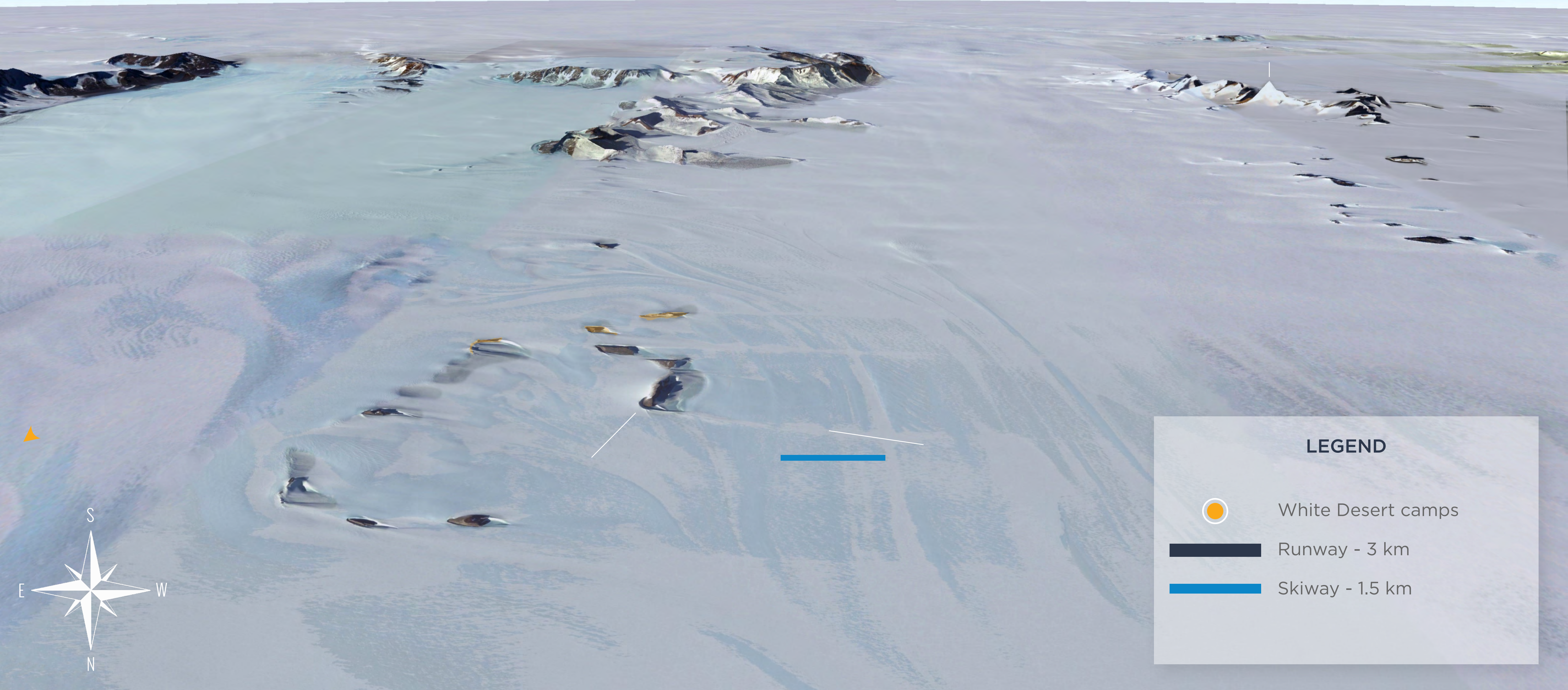
LEGEND

- White Desert Operating Locations
- Basler flights
- Private jet flight
- Ground itineraries



QUEEN MAUD LAND, ANTARCTICA - WOLF'S FANG ZONE

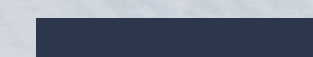
CLICK LOCATION
TO VIEW



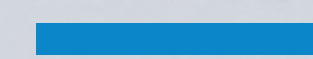
LEGEND



White Desert camps



Runway - 3 km



Skiway - 1.5 km

QUEEN MAUD LAND, ANTARCTICA - WHICHAWAY ZONE

CLICK LOCATION
TO VIEW



Protected area

Hiking zone

4.5 km

2 km

5 km

LEGEND

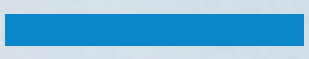
Whichaway Camp



Science Bases



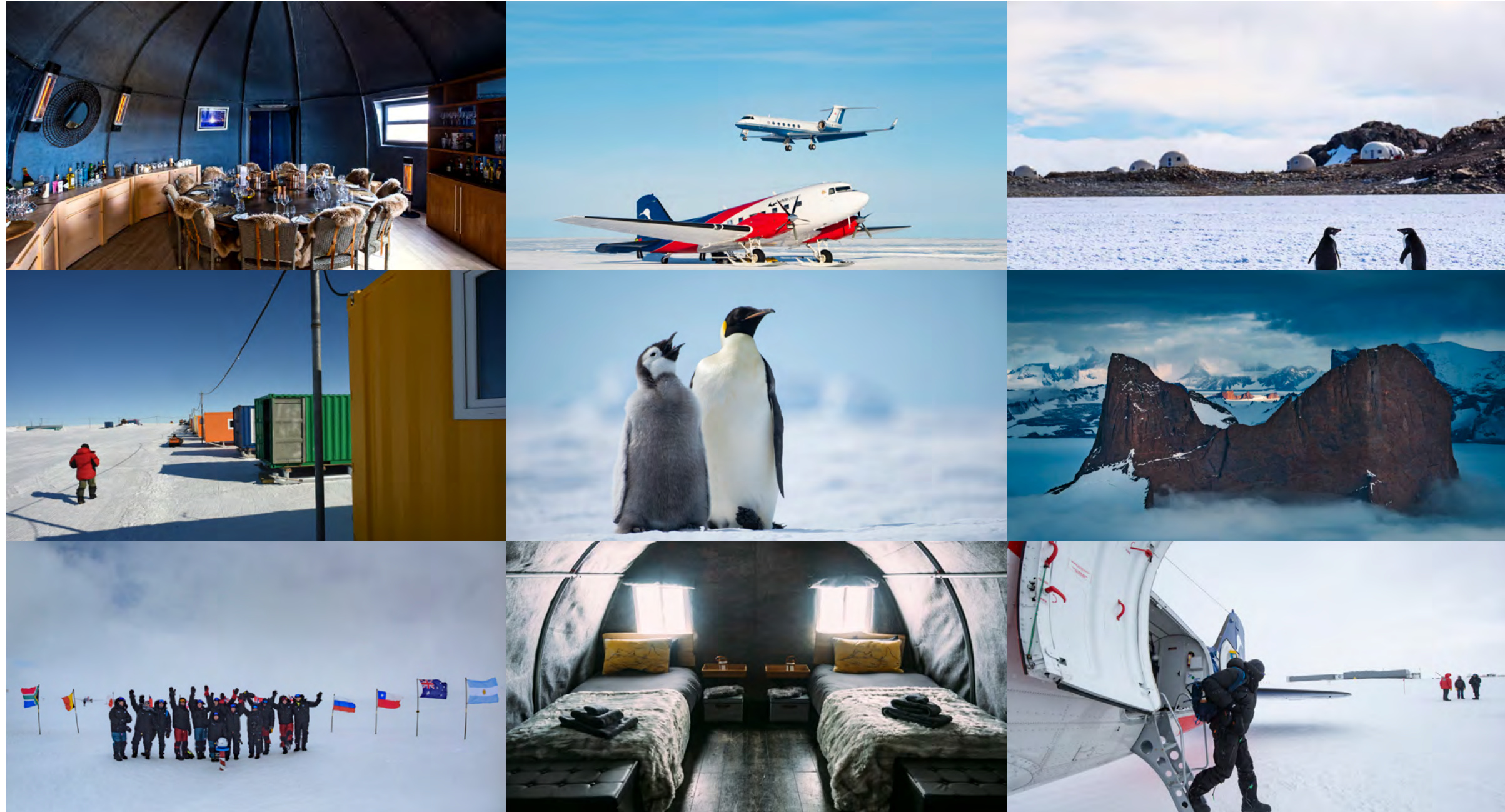
Ground routes



Skiway - 1.5 km



LOCATIONS INDEX



71°32'09"S 08°48'04"E

WOLF'S FANG RUNWAY





71°31'24"S 08°49'36"E

WOLF'S FANG CAMP



71°31'24"S 08°49'36"E

ECHO



71°32'05"S 8°50'19"E

EXPLORERS LOOP

71°32'32"S 8°53'5"E

HENRIKSEN NUNATAKS



71°48'52"S 08°57'29"E

HOLTEDAHL MOUNTAINS



71°53'26"S 08°22'49"E

DRYGALSKI MOUNTAINS



Wolf's Fang peak



70°45'50"S 11°37'02"E

WHICHAWAY CAMP



70°46'46"S 11°36'01"E

WHICHAWAY NUNATAK



71°40'28"S 8°50'34"E

ROPE WALK ZONE



71°40'28"S 8°50'34"E

ICE WAVES & ICE TUNNELS ZONE



70°45'50"S 11°37'02"E

ICE CAVES





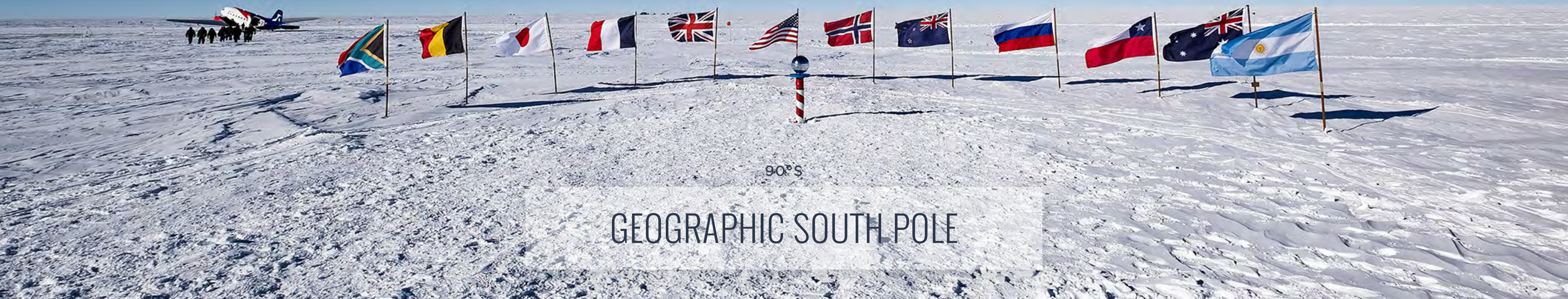
70°36'46"S 08°07'42"E

ATKA BAY

83°06'11"S 11°00'34"E

DIXIE'S CAMP





GEOGRAPHIC SOUTH POLE

70°17'56"S 8°24'56"E

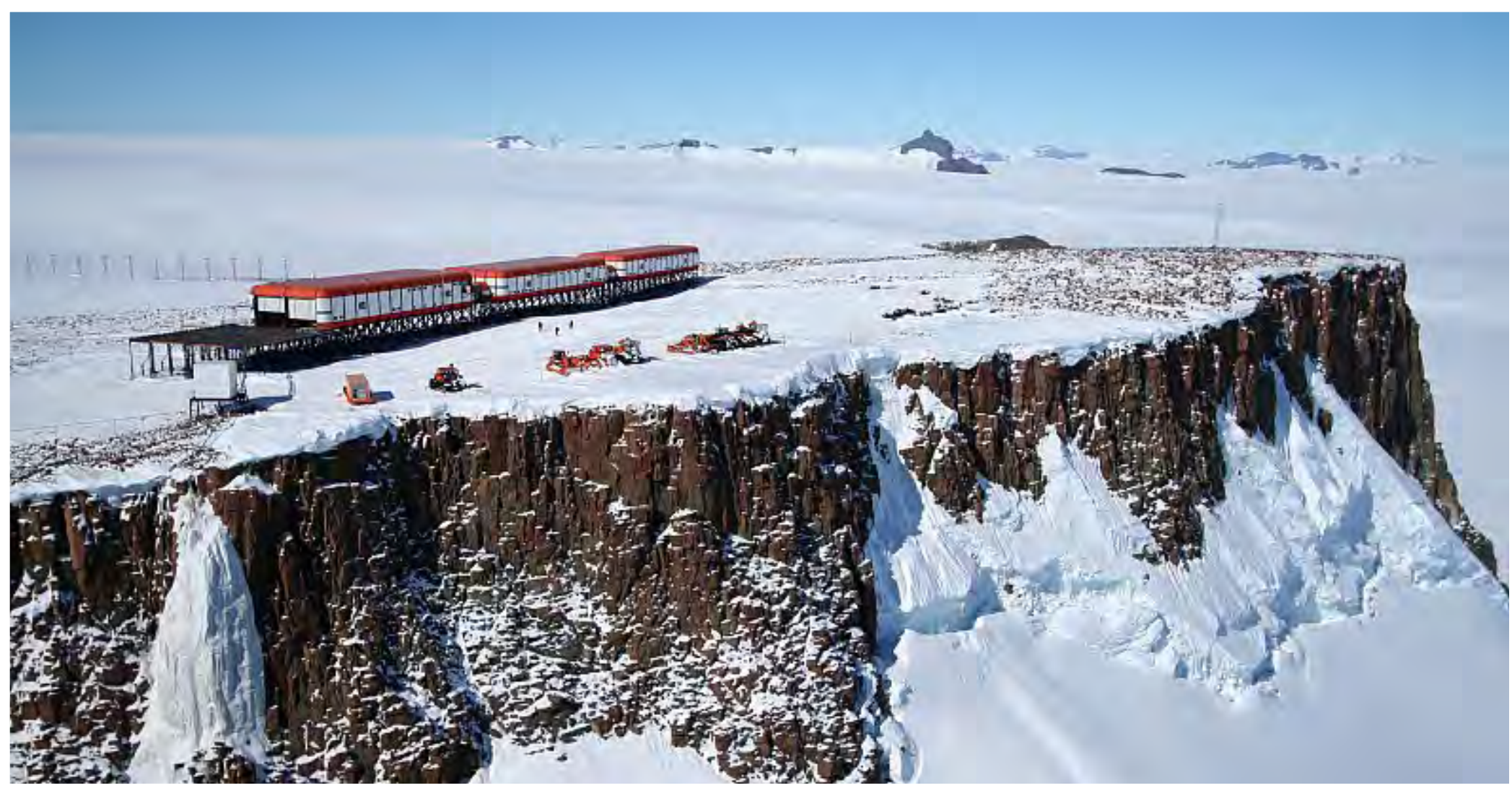
FUEL DEPOT



71°40'28"S 8°50'34"E

SANAE IV

SOUTH AFRICAN RESEARCH BASE



72°00'46"S 2°31'57"E

TROLL STATION

NORWEGIAN RESEARCH STATION



70°49'24"S 11°38'45"E

NOVOLAZAREVSKAYA STATION

RUSSIAN RESEARCH STATION





71°46'00"S 11°43'54"E

MAITRI STATION

INDIAN RESEARCH STATION