



WHITE DESERT
ANTARCTICA



SOUTH POLE & EMPERORS

WHICHAWAY | ANTARCTICA
2023 - 2024

Our signature 8-day journey brings you the very best of Antarctica - a visit to an Emperor Penguin colony of over 28,000 birds and a flight to the lowest point on Earth - the Geographic South Pole.

Flying in by private jet or Airbus and with only 12 guests on each departure, we offer a bespoke service that is as luxurious as it is remarkable.

PRICE PER PERSON: US\$98,500

EXCLUSIVE CHARTER (12 PLACES): US\$1,182,000



7-Time Winner
World Travel Awards

WHITE DESERT & ANTARCTICA

For centuries, the Last Continent has held a special place in our imaginations, yet even now, long after the first explorers reached the South Pole, access to the interior of Antarctica is still only for the very few.

After a five-hour flight from Cape Town, South Africa, we bring you to a place that is both surreal and majestic. From iridescent ice tunnels to vertical spires of rock, from endless horizons to oceans scattered with icebergs; this is a place unlike anywhere else on Planet Earth.

Established 17 years ago by record-breaking polar explorers, White Desert offers you an environmentally-conscious choice that always prioritises the sensitive environment and incredible animals that surround us.

Come with us on an unforgettable journey. Come explore.

33° 56' 29" S 18° 27' 40" E

START POINT

CAPE TOWN, SOUTH AFRICA



Often tipped as one of the most beautiful cities in the world, Cape Town is home to award-winning vineyards and stunning ocean vistas.

We will host a safety briefing the day before your scheduled flight where our staff will explain all kit requirements, assist with any last-minute preparations and update on the latest weather forecasts for Antarctica.



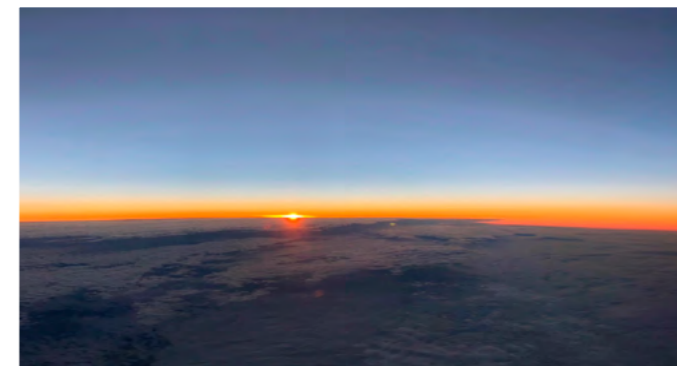
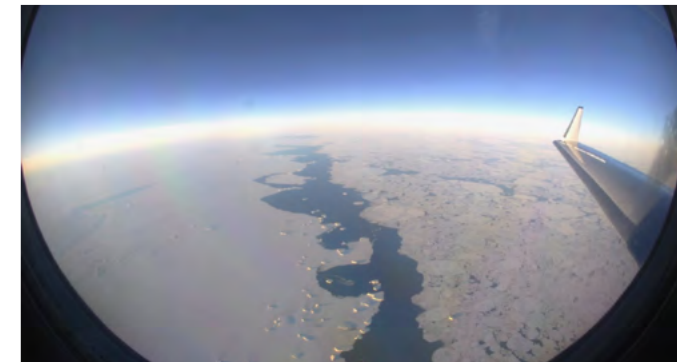


TRAVEL

SOUTH AFRICA TO ANTARCTICA

We travel in uncompromising comfort across the mighty Southern Ocean in a private aircraft. During the five-hour flight, the African night turns to the Antarctic day as we soar over thousands of icebergs and pass into 24 hours of continuous sunshine.

Destination: Wolf's Fang Runway.





CAPE TOWN
SOUTH AFRICA

EMPEROR PENGUIN COLONY

WHICHAWAY

WOLF'S FANG RUNWAY

GEOGRAPHIC SOUTH POLE

FLIGHTS

FLIGHT TO WOLF'S FANG,
ANTARCTICA: 5 hours

FLIGHT TO EMPEROR PENGUINS:
2.5 hours

FLIGHT TO SOUTH POLE:
7 hours

An aerial photograph of a runway carved into a vast, flat glacier in Antarctica. A twin-engine propeller aircraft is parked on the ice. The runway is marked with numerous tracks and lines. In the background, a range of jagged, snow-capped mountains stretches across the horizon under a clear blue sky. The foreground shows the texture of the ice and the runway's edge.

71° 39' 43" S 9° 29' 03" E

WOLF'S FANG RUNWAY

Our runway is overlooked by one of the most magnificent and iconic mountains on the entire continent, named 'Wolf's Fang' by the early Norwegian explorers. After landing on the ancient blue ice, you will be surrounded by massive monoliths of rock that rise vertically from the glacier.

● Gulfstream G550

● Basler BT-67

● Bell 412
Helicopter



Once in Antarctica, you will be transferred by our Basler BT-67 to our luxury camp at Whichaway. Flight time: 30 minutes.

As part of our responsibility towards conserving Antarctica, all emissions from our operations, including all flights to, from and within the continent, are offset by fully-accredited carbon-neutral schemes.



Condé Nast
Traveler

"Whichaway must count as one of the most exclusive stays in the world."

70° 45' 49" S 11° 36' 59" E

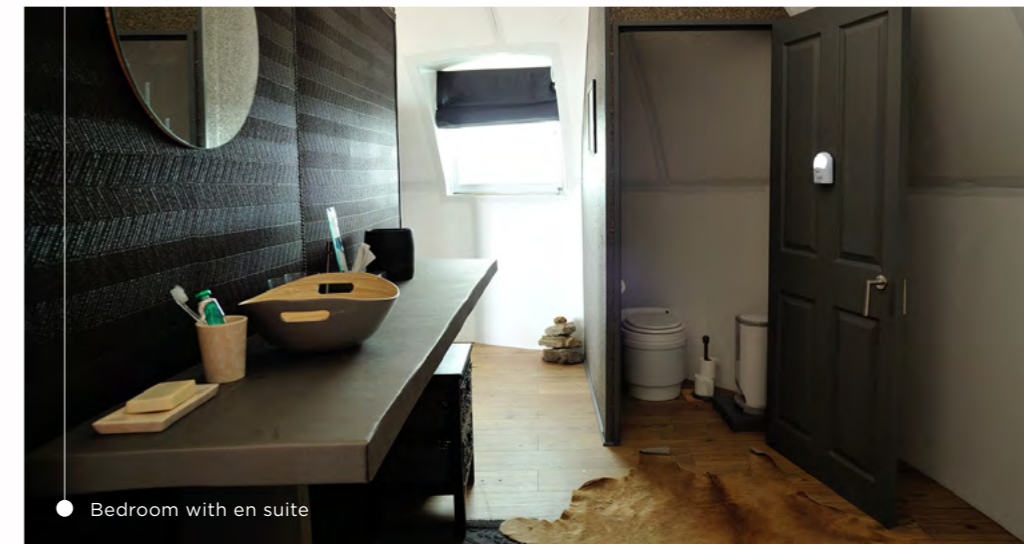
WHICHAWAY

On the edge of the Great White Continent lies the Schirmacher Oasis, an ice-free area that contains over 100 freshwater lakes. This is the site of our unique camp - Whichaway.

Whichaway consists of a collection of hi-tech polar domes set on the shores of a frozen lake and encircled by a magnificent 60-metre (200-foot) icefall. It is warm and comfortable, and the perfect home base for daily activities or when you want to just simply relax.



"Whichaway offers the perfect balance between polar functionality and luxury camp comfort."
Rick Garratt, CEO, Home Choice



● Bedroom with en suite



● Shower pod

Our camp consists of six heated and state-of-the-art bedroom pods that are designed for two guests to enjoy in comfort. At just over 6m (20ft) in diameter, they are spacious with a writing desk, wash area and toilet.

For guests travelling independently, the pod can be partitioned for privacy.

Lounge



Reception



The rest of the camp comprises a shower pod, kitchen and three centralised pods that make up the reception, lounge and dining room. This is where our experienced team of chefs, hosts and guides will take care of every detail for you, allowing you to focus on enjoying your adventure.

While the exterior of our pods is made from cutting-edge materials, the interiors have a relaxed, old-world feel that harks back to the golden age of Antarctic exploration.

Dining Room

"I never expected to find such delicious food and wine in such a remote place. The chef was nothing short of a miracle worker!"
Cathy Mackenzie, Guest



After a busy day of activities, you'll be sure to work up an appetite. Our hearty breakfasts, elegant lunches and three-course dinners will mean you are well fed whilst staying at the end of the world.



Our chefs use the best South African produce to create meals that are full of flavour and sophisticated without being fussy. The wines come from a selection of the finest Cape vineyards, whilst the bread is freshly baked and the coffee freshly ground.



Our service is welcoming, personal and thoughtful, and takes into account each guest's dietary requirements.

Our Basler BT-67s are updated conversions of the DC-3, specially equipped with the latest avionics and skis for landing on snow and ice.



TRAVEL WITHIN ANTARCTICA

WITH THE BASLER BT-67

Robb Report

"Flights by a ski-plane to a massive Emperor-penguin colony and the Geographic South Pole make for lifetime memories."



70° 38' 16" S 8° 15' 45" W

EMPEROR PENGUIN COLONY

*"What a privilege to witness this wildlife phenomenon.
The Emperor Penguins are almost mystical, it was incredible."*
Rina Tham - author of internationally published *Lucky Number 9*



Your visit to the penguins begins with a 2.5 hour flight to Atka Bay, the site of the first episode of Sir David Attenborough's ground-breaking documentary *Seven Worlds, One Planet*. Here you'll see over 14,000 breeding pairs and their newly-hatched chicks, a spectacle full of noise and energy that is a favourite with wildlife watchers and photographers.

There are so few visitors to this colony that the chicks are unafraid of humans and often waddle close by. Mindful of our responsibility to the Antarctic environment and of IAATO guidelines, we keep at least 5m (16.4ft) from the penguins while taking in all the sights and sounds of this rare wildlife spectacle, which remains one of the greatest thrills on Earth!



90° South

THE GEOGRAPHIC SOUTH POLE



The Amundsen-Scott South Pole base



At the heart the Great White Continent lies the South Pole, one of only two stationary points on this rotating Earth! At exactly 90 degrees of latitude, you can walk around the world in only a few paces and marvel at a place where there is no more east, south or west - the only direction is north!

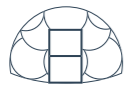
The American Amundsen-Scott research station is the backdrop to this most exceptional place, whose discovery ranks as one of the greatest feats of human exploration ever known.



The Geographic pole marker

"How surreal it was to stand at the bottom of the Earth and circumnavigate the globe in just a few steps."

Colonel Terry Virts - Former NASA Astronaut, Commander of the International Space Station



WHICHAWAY



5 hours



DIXIE'S CAMP



2 hours



SOUTH POLE



2 hours



DIXIE'S CAMP



5 hours



WHICHAWAY

It is a total of 2,400km (1,500mi) from Whichaway to the South Pole. The first part of the journey is a 5-hour flight to FD83, our expedition camp. Flying 3,000m (10,000ft) above the ice, your view is sensational as we cross the High Polar Plateau.

We stop for 1 hour to refuel and then continue another 2 hours to the South Pole itself. There is a true sense of remoteness at this point where, for as far as the eye can see, the white horizon meets the pure blue sky.

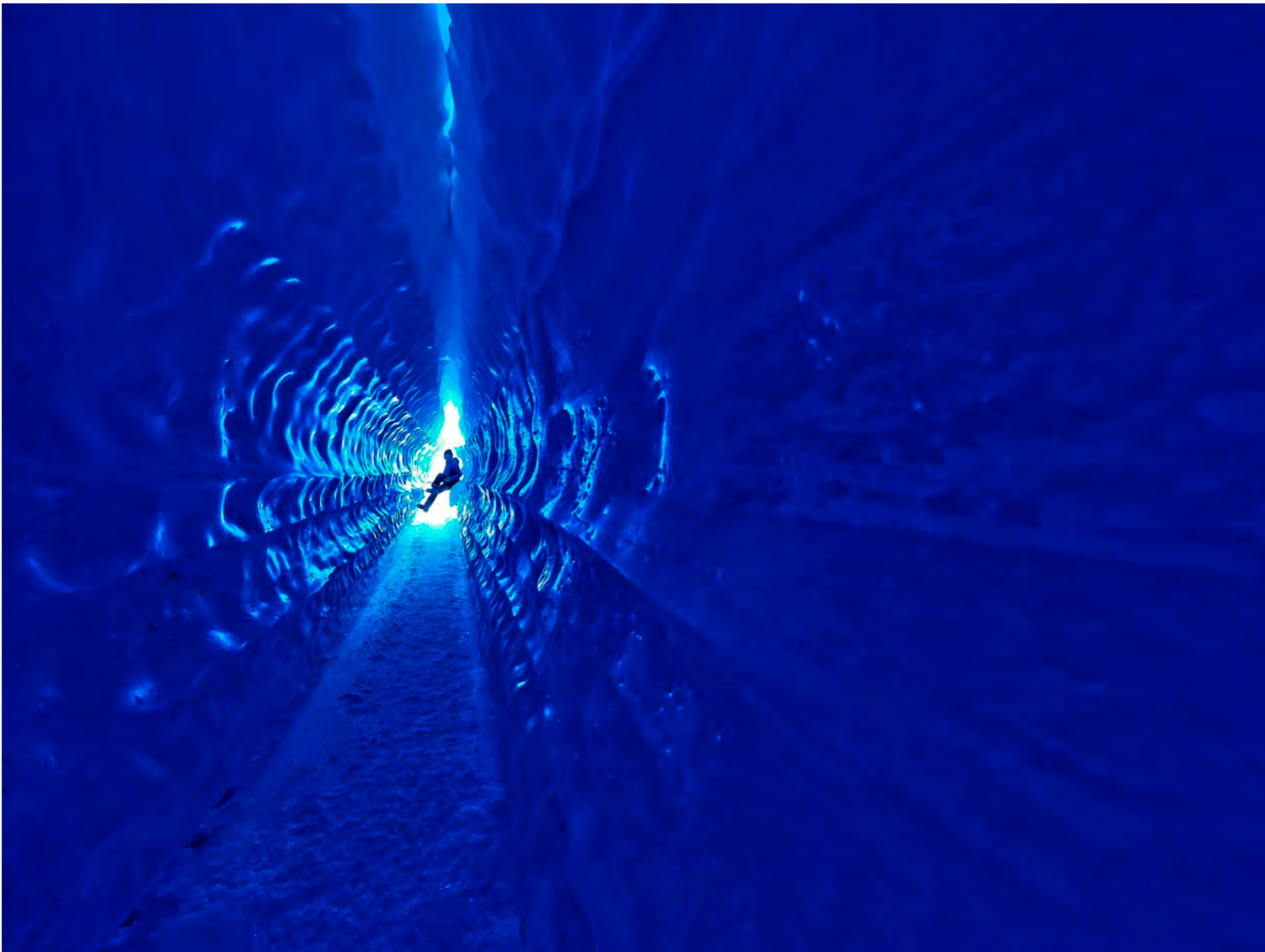
The South Pole - the very lowest point on the Earth and the holy grail of early explorers. Even though we operate approximately ten flights to the South Pole per year, we have had a 100% success rate in reaching the Pole since the 2017/18 season..

We fly back to our expedition camp at 83°S to rest overnight and to join the select few who have ever spent a night in the beauty of the Polar Plateau. You will be well looked-after as we experience camping in one of the wildest places on Earth.

After a night spent as a true explorer, we fly back to our main camp and celebrate your momentous journey.

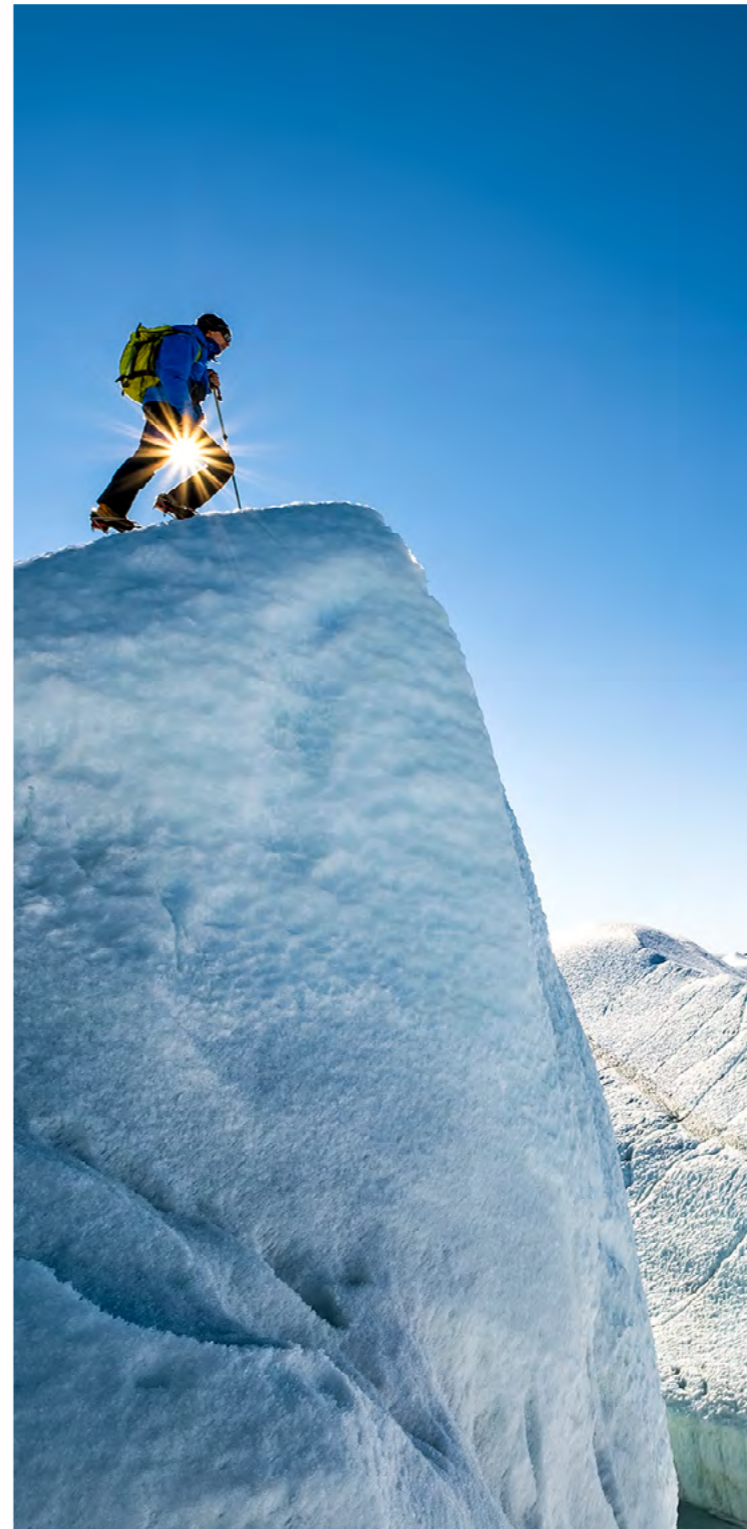
A photograph of an ice cave with a stream and people. The cave's interior is illuminated with blue and purple lights, creating a surreal atmosphere. The walls and ceiling are covered in intricate ice formations, including stalactites and stalagmites. A narrow stream flows through the center of the cave. Several people are visible, some standing on the ice banks and others near the stream. The overall scene is a mix of natural beauty and human activity.

DAILY ACTIVITIES AT WHICHAWAY



With only 12 guests on each adventure, our professional guides will ensure that you are always safe and well looked-after, and that you get the most out of your time.

Your activities can be as adrenaline-fuelled or relaxed as you like: not keen on climbing, fat biking or abseiling? Then perhaps a picnic followed by a sauna and a massage would suit. The choice is yours.





Condé Nast
Traveler

"The logistics that support this 12-guest refuge would test a space mission."

Between rugged mountain ranges and spectacular frozen waves of ice, our guides will expand your horizons and push you only as far as you want to go. Our philosophy is simple - do as much or as little as you like. After all, it's your adventure!

WELLNESS

A trip to Antarctica is the perfect opportunity to rest, recharge and recover from the hustle and bustle of everyday life. Not only are our team ready to lead you through the landscapes of Antarctica, but they are also on hand to guide you in relaxation and meditation techniques.

Newly added for the 2021/22 season, our sauna and wellness pod are perched beside a serene freshwater lake, whose views will inspire you during daily meditation and yoga sessions.



"Every once in a while, I think of the thousands of penguins, our home at Whichaway, the food and the challenges I conquered. When my day gets beyond stressful... I smile!"
Karen Gosling, Guest (2018)



Forbes

"Antarctica, the safest place to visit in 2020 and beyond."

YOUR SAFETY

For all its beauty, Antarctica can be a challenging environment, with low temperatures, strong winds and high altitudes. We believe the best way to protect you is through our staff and we are absolutely uncompromising about the experience and expertise of our people.

All our mountain guides have completed the strenuous 5-year UIAGM qualification, while each camp has its own fully-qualified trauma doctor and accompanying medical kits. Our chief pilot has 10 years of experience flying in Antarctica with over 18,000 hours of logged flight time.

Tracking, satellite communications and mutual Search & Rescue agreements are all part of White Desert's comprehensive safety policies. Furthermore, by operating our own aircraft, we also have the speed and flexibility to arrange an evacuation back to Cape Town in the unlikely event that one should become necessary.



ENVIRONMENT

White Desert believes that responsible tourism is a genuine force for good and supports Sir David Attenborough's stance on the transformative power of wilderness travel: *"No one will protect what they don't care about, and no one will care about what they have never experienced"*.



Camp - As a temporary eco-camp, our whole operation can be dismantled and removed without a trace.



Carbon neutral - White Desert was the first aviation operator in Antarctica to be entirely Carbon Neutral, a status the company has held since 2007.



Waste management - We keep waste to a minimum by repackaging all consumables before we bring them to Antarctica, while at the end of the season, all solid waste is shipped back to South Africa for recycling or responsible disposal.





"It is the most beautiful setting I have seen in all of my travels."

Lewis Pugh, OIG - UN Patron of the Oceans

GUESTS: 12 MAXIMUM

FITNESS: NO SPECIFIC LEVEL REQUIRED

FLIGHT TO ANTARCTICA: 5HRS

FLIGHT TO SOUTH POLE: 7HRS EACH WAY

PRICE: \$98,500 pp

INCLUDED

1. Safety briefing (return transfers provided)
2. Return transfers for Antarctica flights
3. Return flight to Antarctica (inc. 30kg baggage allowance)
4. All accommodation, food and drink (including all alcohol) in Antarctica
5. All guiding fees, support of field guides and logistics staff
6. The use of certain items of polar clothing, as denoted on equipment list
7. Payment by White Desert Ltd of a 'Carbon Tax' for offsetting emissions created by all logistics associated with Antarctic travel

EXCLUDED

1. Commercial flights to and from Cape Town, South Africa
2. Accommodation and meals whilst in Cape Town
3. Polar clothing (you will be sent a tailored kit list in advance of your trip to help you purchase the necessary items)
4. Comprehensive insurance cover (White Desert staff can advise you as to the appropriate cover required)
5. Additional expenses incurred in Cape Town due to any delay
6. Additional baggage costs over the agreed amount
7. Use of a satellite phone whilst in Antarctica

FULL ITINERARY

DAY BEFORE DEPARTURE

White Desert will host a safety briefing in Cape Town. This is where we will check all your polar clothing and prepare you for your flight south.

This itinerary is entirely subject to weather conditions in Antarctica and is meant purely as a guide to what guests may expect day by day. The exact sequence of activities and the types of aircraft mentioned in this brochure may vary.

DAY ONE

We fly over thousands of icebergs on our 5-hour flight across the Southern Ocean to Antarctica. During the flight, we enter the Polar Circle and encounter the continuous daylight of the Antarctic summer.

After landing on the ancient blue ice of the runway, you will transfer to our camp at Whichaway and take a gentle hike around the Oasis.

DAY TWO

Settle into Whichaway and do as much or as little as you like each day. Activities range from yoga, massages and gentle treks to exploring the incredible ice waves, summiting a nunatak, ice climbing and even abseiling!

On quieter days, you'll hear talks from our polar explorer staff about some of the lesser-known history of Antarctica and their world record-breaking expeditions.

DAY THREE

We fly 2 hours across Antarctica, providing beautiful views of the nearby mountain ranges and coastline, before landing at the emperor penguin colony at Atka Bay. You will be among the very few who have ever witnessed such a spectacle, observing the real-life stars of *March of the Penguins*.

DAY FOUR

We spend the day exploring the ice waves below our camp, delving into the series of ice tunnels that are as surreal as they are beautiful.

Then you'll be off on an Arctic Truck safari, winding your way through the snow and ice to an incredible vantage point where you can take in the panoramic view over the waves that you have just explored.

DAY FIVE**

We leave early in the morning in our Basler BT-67 aircraft, flying over stunning mountain ranges before landing at Dixie's camp to refuel.

After a walk on the High Polar Plateau we will continue to the South Pole, where you will have plenty of time for photos and a chance to stamp your passport before flying back to Dixie's camp and overnighing in the great wilderness of the Plateau.

DAY SIX

After a night under canvas, you'll enjoy a hearty breakfast before boarding the plane once again for the flight back to Whichaway.

The flight is the perfect chance to appreciate the immense scale of Antarctica, before you return to our camp for a three-course champagne dinner to celebrate your achievement.

DAY SEVEN

An adventurous hike along a winding cliff face affords guests stunning views over pressure ridges of ice that have been folded over millennia by the ocean.

Our world-class mountain guides will lead you on this challenging hike, ensuring your safety at all times.

DAY EIGHT

The flight out of Antarctica will be the last of your enduring memories of the great White Continent before you dive back into the vibrant energy of Africa. You will be transferred to your hotel where you will have a chance to relax and reflect on your Antarctic adventure!

** Please bear in mind that the South Pole is situated at an apparent altitude of 4,000m with an approximate ambient temperature of -25°C. Those with pre-conditions for altitude sickness should not choose this option. If you are unsure in any way, please contact White Desert for any advice or further information.



● White Desert team



ABOUT WHITE DESERT

White Desert was founded in 2005 by husband and wife team Patrick & Robyn Woodhead, who hold four exploration world records between them. When White Desert began, visitors reached Antarctica almost exclusively by cruise ship, limiting them to the Antarctic Peninsula and its coastline. Instead, Patrick and Robyn wanted to introduce guests to the deep interior of the continent while offering them a level of hospitality and comfort more akin to a high-end Africa safari than a rugged polar expedition.

Receiving its operating permit from the British Foreign, Commonwealth & Development Office (FCDO), the company has grown year-on-year and is now comprised of 70 staff of 17 different nationalities during season, providing a unique and highly specialised skillset.

Antarctic travel is the only thing White Desert does. It's our passion, it's our mission and it's in our DNA.



● Safety briefing at the Silo Hotel in Cape Town


WHITE DESERT
ANTARCTICA



COME WITH US ON AN UNFORGETTABLE JOURNEY. COME EXPLORE.

INFO@WHITE-DESERT.COM

[CLICK FOR AVAILABLE DATES](#)

+1 815 534 4533