

  
**WHITE DESERT**  
ANTARCTICA



## THE OWNERS CLUB

WHICHAWAY | ANTARCTICA  
2022 - 2023

This is an exceptionally rare opportunity to land your own aircraft on the only runway in Antarctica specifically designed for private jets. With no modifications required to your aircraft, you will be able to tailor the experience entirely to your schedule.

Whether you wish to stay at our luxury camp and spend a few days visiting the South Pole and Emperor Penguins, or you simply wish to experience the 7th Continent for a few hours, we can realise your dream in safety and style.

PRICE UPON REQUEST





7-Time Winner  
World Travel Awards

# WHITE DESERT & ANTARCTICA

For centuries, the Last Continent has held a special place in our imaginations, yet even now, long after the first explorers reached the South Pole, access to the interior of Antarctica is still only for the very few.

After a five-hour flight from Cape Town, South Africa, we bring you to a place that is both surreal and majestic. From iridescent ice tunnels to vertical spires of rock, from endless horizons to oceans scattered with icebergs; this is a place unlike anywhere else on Planet Earth.

Established 17 years ago by record-breaking polar explorers, White Desert offers you an environmentally-conscious choice that always prioritises the sensitive environment and incredible animals that surround us.

Come with us on an unforgettable journey. Come explore.

Play our 1-minute  
introductory video





33° 56' 29" S 18° 27' 40" E

# START POINT

CAPE TOWN, SOUTH AFRICA

Often tipped as one of the most beautiful cities in the world, Cape Town is home to award-winning vineyards and stunning ocean vistas.

We will host a safety briefing the day before your scheduled flight where our staff will explain all kit requirements, assist with any last-minute preparations and update you on the latest weather forecasts for Antarctica.





# AIRCRAFT TYPES THAT HAVE PREVIOUSLY LANDED AT WOLF'S FANG RUNWAY



GULFSTREAM G650



DASSAULT FALCON 7X



GULFSTREAM G550



CAPE TOWN  
SOUTH AFRICA

WHICHAWAY

WOLF'S FANG RUNWAY

GEOGRAPHIC SOUTH POLE

## FLIGHTS

**FLIGHT TIME TO WOLF'S FANG, ANTARCTICA:** 5 hours

**DEPARTURE PERIOD:** 1st December - 1st February

**FUEL:** There is limited refueling capacity at Wolf's Fang runway





71° 39' 43" S 9° 29' 03" E

## WOLF'S FANG RUNWAY

Our runway is overlooked by one of the most magnificent and iconic mountains on the entire continent, named 'Wolf's Fang' by the early Norwegian explorers. After landing on the ancient blue ice, you will be surrounded by massive monoliths of rock that rise vertically from the glacier.





## OPERATIONAL INFORMATION

**CO-ORDINATES:** 71°31'S 08°48'E

**ELEVATION:** 1127m AMSL

**LENGTH:** 3000m

**WIDTH:** 60m

**ORIENTATION:** 175 TRUE

**DECLARED DISTANCES:** TORA and LDA - 2500m  
TODA and ASDA - 3000m



Wolf's Fang runway is sited on glacial blue ice which, when properly treated, is entirely suitable for business jets.

The 3,000m x 60m runway is maintained and operated by an experienced ground crew that attend to monitoring of weather, ground-to-air communication and runway grooming. Weather forecasting and observation services are tailored to support planned flying operations and a daily briefing service is available for pilots departing Cape Town.

A full operational briefing will be given to your crew, including a test landing where needed. For the first time ever, you can now safely bring your personal aircraft to Antarctica.

To date, White Desert has completed over 100 landings at Wolf's Fang Runway with an impeccable safety record.



Subject to the availability of our camps, with the use of your own aircraft, you can entirely bespoke your experience's itinerary and dates. We have options ranging from fully immersive 8-day programmes to shorter trips with select itineraries.





# SUPPORT AIRCRAFT & VEHICLES



Baslers BT-67



Arctic Truck



Bell 412 Helicopter

Once in Antarctica, we have two DC3 Basler planes that are equipped with skis to land on snow. Depending on dates, we also have access to helicopters, while our ground teams use specially modified 6x6 vehicles to transport you on the ground.

As part of our responsibility towards conserving Antarctica, all emissions from our operations, including all flights to, from and within the continent, are offset by fully-accredited carbon-neutral schemes.





Condé Nast  
**Traveler**

*"Whichaway must count as one of the most exclusive stays in the world."*

70° 45' 49" S 11° 36' 59" E

WHICHAWAY

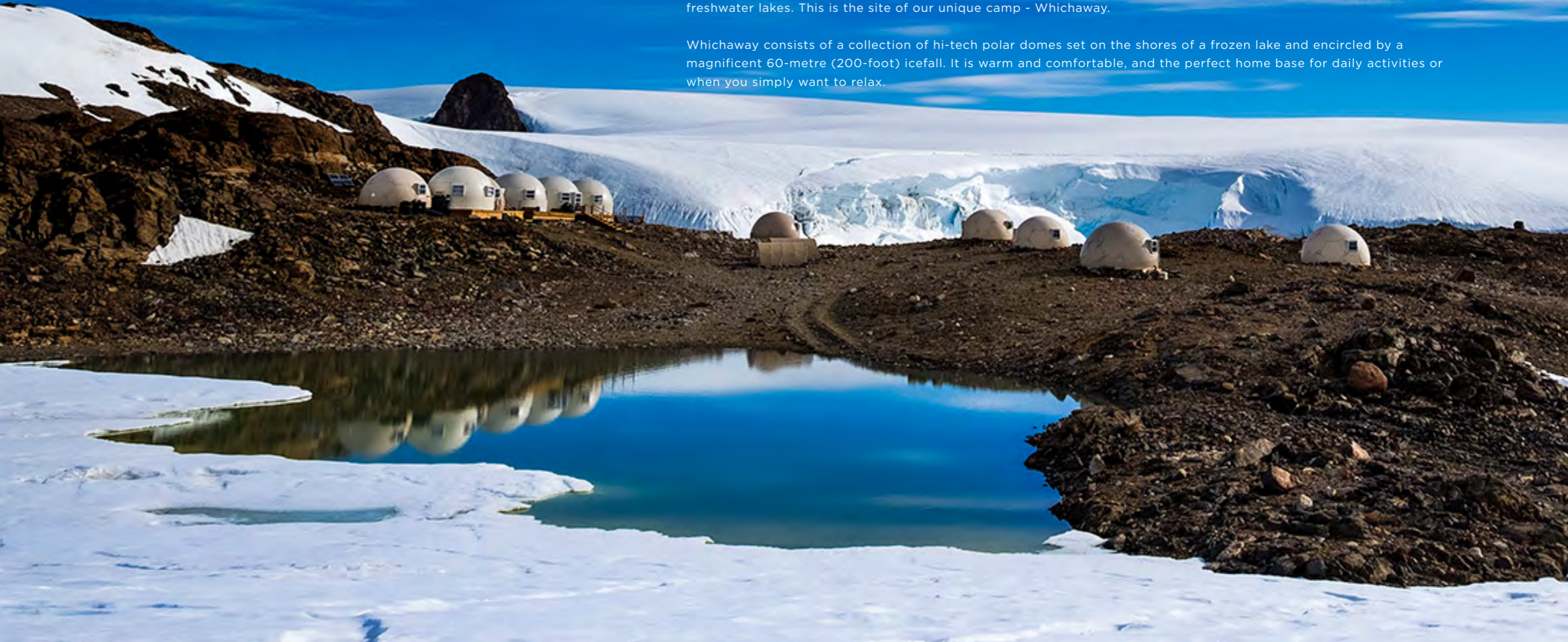


[CLICK TO VIEW VIDEO OF WHICHAWAY](#)



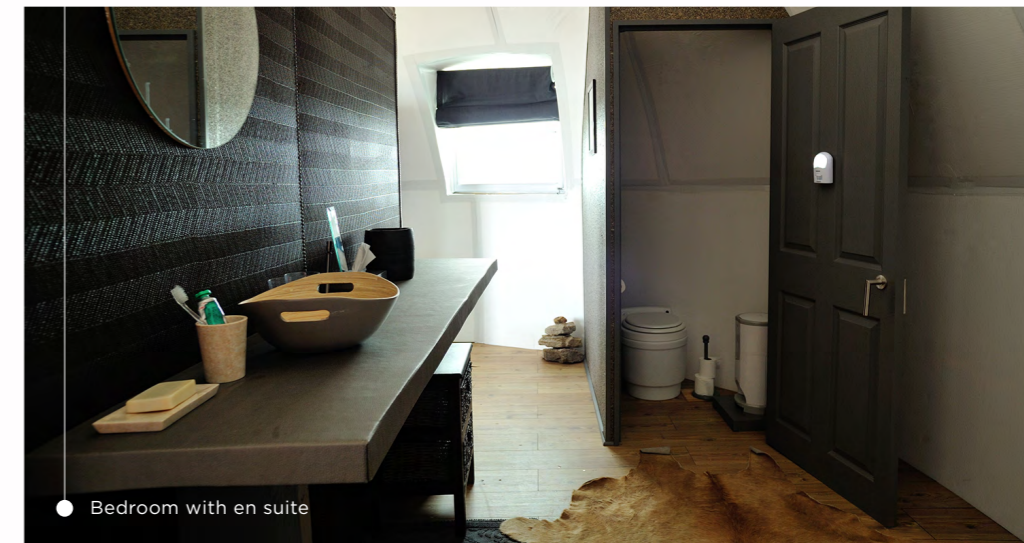
Near the coast of the Great White Continent lies the Schirmacher Oasis, an ice-free area that contains over 100 freshwater lakes. This is the site of our unique camp - Whichaway.

Whichaway consists of a collection of hi-tech polar domes set on the shores of a frozen lake and encircled by a magnificent 60-metre (200-foot) icefall. It is warm and comfortable, and the perfect home base for daily activities or when you simply want to relax.





*"Whichaway Camp offers the perfect balance between polar functionality and luxury camp comfort."* Rick Garratt, CEO, Home Choice



● Bedroom with en suite



● Shower pod

Our camp consists of six heated and state-of-the-art bedroom pods that are designed for two guests in each. At just over 6m (20ft) in diameter, you'll find they are also spacious, with a writing desk, wash area and toilet.

For guests travelling separately, the pod can be partitioned for privacy.



Lounge



Reception



The rest of the camp comprises a shower pod, kitchen and three centralised pods that make up the reception, lounge and dining room. This is where our experienced team of chefs, hosts and guides will take care of every detail for you, allowing you to focus on enjoying your adventure.

While the exterior of our pods is made from cutting-edge materials, the interiors have a relaxed, old-world feel that harks back to the golden age of Antarctic exploration.



Dining Room

*"I never expected to find such delicious food and wine in such a remote place. The chef was nothing short of a miracle worker!"*  
Cathy Mackenzie, Guest



After a busy day of activities, you'll be sure to work up an appetite. Our hearty breakfasts, elegant lunches and three-course dinners will mean you are well fed whilst staying at the end of the world.



Our chefs use the best South African produce to create meals that are full of flavour and sophisticated without being fussy. The wines come from a selection of the finest Cape vineyards, whilst the bread is freshly baked and the coffee freshly ground.



Our service is welcoming, personal and thoughtful, and takes into account each guest's dietary requirements.





## DAILY ACTIVITIES





[CLICK TO VIEW VIDEO OF ICE TUNNEL](#)



With only 12 guests on each adventure, our professional guides will ensure that you are always safe and well looked-after, and that you get the most out of your time.

Your activities can be as adrenaline-fuelled or relaxed as you like: not keen on climbing, fat biking or abseiling? Then perhaps a picnic followed by a sauna and a massage would suit. The choice is yours.







## Robb Report

*"A trip down south to the Seventh Continent is intense — which is something the Antarctica experts at White Desert know well."*

Between rugged mountain ranges and spectacular frozen waves of ice, our guides will expand your horizons in this wonderland of discovery. Our philosophy is simple - do as much or as little as you like. After all, it's your adventure!



# WELLNESS

A trip to Antarctica is the perfect opportunity to rest, recharge and recover from the hustle and bustle of everyday life. Not only are our team ready to lead you through the landscapes of Antarctica, but they are also on hand to guide you in relaxation and meditation techniques.

Newly added for the 2021/22 season, our sauna and our wellness pod are perched beside a serene freshwater lake, whose views will inspire you during daily meditation and yoga sessions.



*"Every once in a while, I think of the thousands of penguins, our home at Whichaway, the food and the challenges I conquered. When my day gets beyond stressful... I smile!"*

Karen Gosling, Guest (2018)





# Forbes

*"Antarctica, the safest place to travel in 2020 and beyond."*



## YOUR SAFETY

For all its beauty, Antarctica can be a challenging environment, with low temperatures, strong winds and high altitudes. We believe the best way to protect you is through our staff and we are absolutely uncompromising about the experience and expertise of our people.

All our mountain guides have completed the strenuous 5-year UIAGM qualification, while each camp has its own fully-qualified trauma doctor and accompanying medical kits. Our chief pilot has 10 years of experience flying in Antarctica with over 18,000 hours of logged flight time.

Tracking, satellite communications and mutual Search & Rescue agreements are all part of White Desert's comprehensive safety policies. Furthermore, by operating our own aircraft, we also have the speed and flexibility to arrange an evacuation back to Cape Town in the unlikely event that one should become necessary.





# ENVIRONMENT

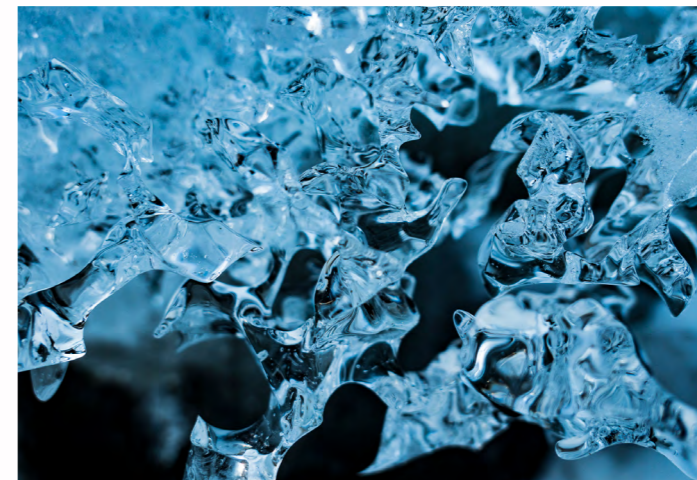
White Desert believes that responsible tourism is a genuine force for good and supports Sir David Attenborough's stance on the transformative power of wilderness travel: *"No one will protect what they don't care about, and no one will care about what they have never experienced"*.



**Camp** - As a temporary eco-camp, our whole operation can be dismantled and removed without a trace.



**Carbon neutral** - White Desert was the first aviation operator in Antarctica to be entirely Carbon Neutral, a status the company has held since 2007.



**Waste management** - We keep waste to a minimum by repackaging all consumables before we bring them to Antarctica and then, at the end of the season, shipping all solid waste back to South Africa for recycling or responsible disposal.







*"It is the most beautiful setting I have seen in all of my travels."*

Lewis Pugh, OIG - UN Patron of the Oceans

**GUESTS: 12 MAXIMUM**

**FITNESS: NO SPECIFIC LEVEL REQUIRED**

**FLIGHT TO ANTARCTICA: 5HRS**

**PRICE: UPON REQUEST**

## INCLUDED

1. Safety briefing (return transfers provided)
2. Return transfers for Antarctica flights
3. All accommodation, food and drink (including all alcohol) in Antarctica
4. All guiding fees, support of field guides and logistics staff
5. The use of certain items of polar clothing, as denoted on equipment list
6. Payment by White Desert Ltd of a 'Carbon Tax' for offsetting emissions created by all logistics associated with Antarctic travel

## EXCLUDED

1. Accommodation and meals whilst in Cape Town
2. Polar clothing (you will be sent a tailored kit list in advance of your trip to help you purchase the necessary items)
3. Comprehensive insurance cover (White Desert staff can advise you as to the appropriate cover required)
4. Additional expenses incurred in Cape Town due to any delay
5. Additional baggage costs over the agreed amount
6. Use of a satellite phone whilst in Antarctica



# SUGGESTED ITINERARY

## DAY BEFORE DEPARTURE

White Desert will host a safety briefing in Cape Town. This is where we will check all your polar clothing and prepare you for your flight south.

## DAY ONE

The flight from Cape Town to Wolf's Fang Runways takes approximately 5hrs. Partway through your flight, you will pass into the Polar Circle and the continuous daylight of the Antarctic summer.

After you have landed at Wolf's Fang runway, we will spend the afternoon hiking through massive monoliths of rock before transferring to Whichaway aboard our Basler BT-67 skiplane.

At Whichaway, we will have a champagne picnic overlooking an immense icefall, followed by a gourmet dinner.

## DAY TWO

Activities can be easy or adrenaline-fuelled. The choice is up to you...

Perhaps we can suggest we trek up a nearby nunatak - an easy climb which offers spectacular views towards the coastline of Antarctica - followed by a visit to the iridescent ice tunnels that extend for hundreds of metres beneath the ice?

## DAY THREE

Today you'll have the chance to explore deeper into the Schirmacher Oasis - a rare stretch of terra firma surrounded on all sides by Antarctic ice cap - and home to two science bases.

Then you'll be off on an Arctic Truck safari, winding your way through the snow and ice to explore the ice waves below our camp, delving into the series of ice tunnels that are as surreal as they are beautiful.

## DAY FOUR

We venture out in the 4x4s to an extraordinary cliff walk overlooking the surreal ice waves.

The trek is technically easy and led by our UAIGM-qualified guides, but the view from the top of a 60m (200ft) cliff face is truly exhilarating.

In the evening, we board the Basler BT-67 back to Wolf's Fang Runway for your flight back to the energy and excitement of Africa.



This itinerary is entirely subject to weather conditions in Antarctica and is meant purely as a guide to what guests may expect day by day. The exact sequence of activities and the types of aircraft mentioned in this brochure may vary.





# ADDITIONS TO YOUR TRIP

## VIRGIN PEAK

Antarctica is truly the final frontier for mountaineering, with thousands of peaks reaching as high as 4,892m (16,000ft), many of them unnamed and most of them unclimbed. Take the opportunity to explore a mountain where no one has ever set foot before, led by UIAGM-qualified high mountain guides. Contact us to discuss your options!



## AFRICAN ADVENTURES

Our home base in Cape Town isn't just the gateway to Antarctica, it is also a hub for a multitude of African experiences. From private safaris in Kruger National Park to visiting Victoria Falls or the Okavango Delta, White Desert can introduce you to the finest travel experiences in Africa. We'd be happy to make recommendations for you!



## EMPEROR PENGUIN COLONY VISIT

This is your opportunity to visit Atka Bay's Emperor penguin colony of over 28,000 birds. It is a spectacle full of noise and energy that is a favourite with wildlife watchers and photographers. There are so few visitors to this colony that the chicks are unafraid of humans and often waddle close by. You will have plenty of time there, to take all the sights and sounds of this rare wildlife spectacle, which remains one of the greatest thrills on Earth!

[Click here for more information on trips to see the Emperor Penguins](#)



## SOUTH POLE VISIT

Be one of the very few to stand at the bottom of the Earth - the Geographic South Pole. At exactly 90 degrees of latitude, you can walk around the world in only a couple of paces and marvel at a place where there is no more east, south or west - the only direction is north! The American Amundsen-Scott research station is the backdrop to this extraordinary place, whose discovery ranks as one of the greatest feats of human exploration ever known.

[Click here for more information on trips to the South Pole](#)





● White Desert team



## ABOUT WHITE DESERT

White Desert was founded in 2005 by husband and wife team Patrick & Robyn Woodhead, who hold four exploration world records between them. When White Desert began, visitors reached Antarctica almost exclusively by cruise ship, limiting them to the Antarctic Peninsula and its coastline. Instead, Patrick and Robyn wanted to introduce guests to the deep interior of the continent while offering them a level of hospitality and comfort more akin to a high-end Africa safari than a rugged polar expedition.

Receiving its operating permit from the British Foreign, Commonwealth & Development Office (FCDO), the company has grown year-on-year and is now comprised of 70 staff of 17 different nationalities during season, providing a unique and highly specialised skillset.

Antarctic travel is the only thing White Desert does. It's our passion, it's our mission and it's in our DNA.



● Safety briefing at the Silo Hotel in Cape Town





JOIN US ON AN UNFORGETTABLE JOURNEY. COME EXPLORE.

FOR FURTHER INFORMATION PLEASE GET IN TOUCH  
[INFO@WHITE-DESERT.COM](mailto:INFO@WHITE-DESERT.COM) +1 815 534 4533