



WHICHAWAY
EARLY EMPERORS

WHITE DESERT & ANTARCTICA

Almost 2 decades ago, we dreamed of sharing this extraordinary continent, so rarely visited, with people other than scientists and explorers. We wanted to guide people on a personal journey to the last true wilderness and most remote place on Earth – Antarctica.

Each year we have the privilege of bringing just 250 guests from our home in Cape Town to the Seventh Continent. We want people to experience this breath-taking place in luxury and to hopefully go home changed in the most positive of ways.

With rare access to the interior of Antarctica and the support of our extraordinary guides, you will encounter a pristine glacial landscape of immeasurable splendour. Here icebergs tower like carved cathedrals, wildlife thrives in the harshest of conditions, glistening ice sheets stretch to the skyline and shards of rock pierce through pristine snowfields. The end of the world is unimaginably beautiful.

To see the Emperor penguins and their newly born chicks existing in this unforgiving environment is humbling; we bear witness to their fight for survival against seemingly insurmountable odds. Standing on the South Pole is a feat experienced by fewer than 500 people each year! Once here, there is no more East, West or South – only North...

The Continent has had a deep and lasting impact on all of us at White Desert and we look forward to sharing it with you.

Patrick Woodhead
Co-founder and CEO

“The mountains are the most impressive I have seen across Earth, Venus and Mars.”

~ COLONEL TERRY VIRTIS



SUSTAINABILITY

White Desert believes that responsible tourism is a genuine force for good. We support Sir David Attenborough's stance on the transformative power of first-hand travel/knowledge: "No one will protect what they don't care about, and no one will care about what they have never experienced".

Mindful of this delicate environment, the experience is designed to leave no trace on the glacial landscape. Sustainable practices are implemented across every aspect of our operation. There are few places on earth that can provide such potential for personal growth and a change in perspective - simply through visiting. Our guests often leave Antarctica forever changed, returning home as ambassadors for our planet.



SAF - We are the first operator in Antarctica to use Sustainable Aviation Fuel in our fleet. White Desert aims to replace all fuel used in Antarctica to SAF over a 3-5 year period.



Carbon neutral - White Desert was the first aviation operator in Antarctica to be entirely Carbon Neutral, a status the company has held since 2007. Your entire trip with us is fully offset.



Waste management - We minimise waste by repackaging all consumables before bringing them to Antarctica. At season's end, all solid waste is shipped back to South Africa for recycling or responsible disposal.

SAMPLE ITINERARY

DAY BEFORE DEPARTURE

White Desert hosts a mandatory safety briefing in Cape Town.

Our Guest Experience team will personally check your kit & polar clothing to prepare for your flight south.



This itinerary is entirely subject to weather conditions in Antarctica and is meant purely as a guide to what guests may expect day by day. The exact sequence of activities and the types of aircraft mentioned in this brochure may vary. Antarctica is a bucket list trip for a reason - Mother Nature reigns supreme here, that’s what makes it a true adventure.

DAY 1

You fly over thousands of icebergs on our 5-hour flight across the Southern Ocean to Antarctica. During the flight, you enter the Polar Circle and the continuous daylight of the Antarctic summer.

After landing on the ancient blue ice of the runway, you will transfer to our camp at Whichaway and have the chance to stretch your legs on a gentle hike around the Oasis.

DAY 2

Settle into Whichaway and do as much or as little as you like each day. Activities range from gentle treks to the incredible ice waves, summiting a nunatak, ice climbing and even abseiling!

After the day’s activities you will hear a talk about the incredible life cycle of the Emperor Penguins in preparation for your visit the following day.

DAY 3

You fly 2.5 hours across Antarctica on our BT-67 aircraft, enjoying immense views of the High Polar Plateau, before landing at the Emperor Penguin colony at Atka Bay.

Wrapped up in the sights and sounds of thousands of penguins, you will be among the very few who have ever witnessed such a spectacle, observing the real-life stars of *March of the Penguins*.

DAY 4

You spend the day exploring the ice waves below our camp, delving into the series of ice tunnels that are as surreal as they are beautiful.

Then you’ll head off with your guide, winding your way through the snow and ice to an incredible vantage point where you can take in the panoramic view over the waves that you have just explored.

DAY 5

An adventurous hike along a winding cliff face shows you stunning views of the extraordinary waves of ice that have been created over millennia by constant pressure from the ocean. Our world-class mountain guides will lead you on this challenging hike, ensuring your safety at all times on this unforgettable day.

DAY 6

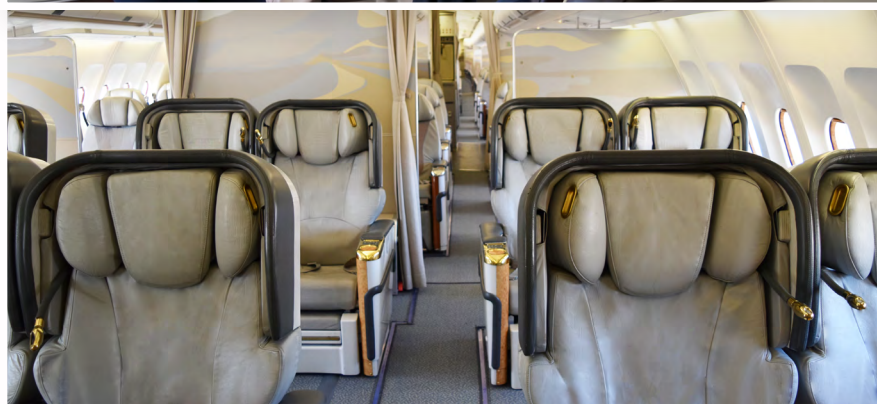
The flight out of Antarctica will be the last of your enduring Antarctic memories before you delve back into the vibrant energy of Africa. You will be transferred to your hotel where you will have a chance to relax and reflect on your Antarctic adventure!

TRAVEL

CPT — WFR
South Africa — Antarctica

The journey to the Continent is aboard one of our aircraft; a 'heavy' such as an Airbus A340 or private jet. You are joining a select group of like-minded explorers journeying across the mighty Southern Ocean.

During the **five-hour flight**, we cross the Polar Circle and soar over thousands of icebergs and pass into 24 hours of continuous sunshine. Destination: Wolf's Fang Runway.



FLIGHTS

CPT Cape Town	5 hrs	WFR Wolf's Fang Runway
WFR Wolf's Fang Runway	2.5 hrs	ATK Atka Bay, Emperor penguin colony





WOLF'S FANG RUNWAY

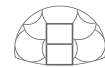
Wolf's Fang is one of the only privately managed blue ice runways in the world. The three-kilometre stretch stands in the shadow of one of the continent's most iconic mountains - named Ulvetanna or 'Wolf's Fang' by the early Norwegian explorers. It stands like a primeval sentinel surrounded by staggering spires of rock that pierce the icebound landscape.

On arrival, that first glacial breath charges through your body with lightning speed. Underfoot the ice crackles – sound heightened by the overwhelming sense of stillness. In every direction the timeless landscape envelops you and the magnitude of where you are becomes a visceral reality.

Once in Antarctica you will be transferred via Basler BT-67 to our luxury camp: Whichaway.



----- 30 minutes -----



Wolf's Fang Runway

Whichaway



WHICHAWAY

Our flagship luxury camp.



WHICHAWAY

Nestled deep within the glacial landscape of Antarctica, lies a true oasis of luxury and adventure. Our flagship camp, Whichaway is so named because when our Founder was looking for a place to build the camp, he got lost and wasn't sure which way to go!

While the majority of Antarctica is covered in ice, Whichaway is located on a rare rocky outcrop on the Schirmacher Oasis, sitting right on the edge of a frozen lake. Sophisticated and luxurious, the camp is encircled by an enormous cliff made of iridescent blue ice. The six bedroom pods are elegant and warm, while the communal spaces provide the perfect base for meals, cocktail hours and relaxation between activities - including a Canadian cedar sauna.

Listen to the rhythm of nature as the ice shifts and groans in the distance.

Depending on the time of your visit, this location allows guests to explore nearby ice tunnels, ice waves and blue river as well as a crystal cave network. It is ideal for those seeking soft adventure while still exploring some incredible sights. And with experienced guides on hand to share their wealth of knowledge on the local wildlife and environment, guests can explore this untouched wilderness with complete confidence.

“The pinnacle of luxury in one of the most remote places on Earth.”

~ Forbes





[CLICK TO DISCOVER WHICHAWAY](#)



Our camp consists of six heated bedroom pods designed for two guests to enjoy in comfort including a writing desk, wash area and toilet.

For guests travelling independently, the beds are partitioned for privacy.





The rest of the camp comprises a shower pod and our 'Compass Lounge': three centralised pods that make up the reception, lounge and dining room. Let our experienced team of chefs, hosts and guides take care of every detail for you, allowing you to focus on enjoying your adventure with us.

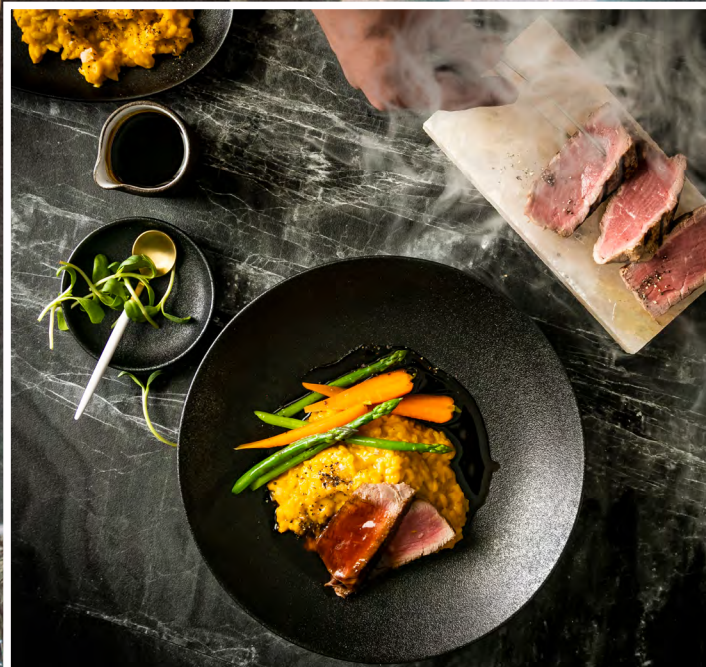
While the exterior of our pods is made from cutting-edge materials, the interiors have a relaxed, old-world feel that harks back to the 'Golden Age' of Antarctic exploration.



FINE DINING

“Thank you all for this, I feel like Antarctica changed me in the best possible way.”

~ SEAN, USA



Our breakfasts, elegant lunches and three-course dinners are prepared to ensure you enjoy the finest cuisine during your stay at the end of the world.



Our chefs use local South African produce to create meals that are full of flavour and flair with wines sourced from the finest Cape vineyards.

TRAVEL WITHIN ANTARCTICA

Our Basler BT-67s are upgraded conversions of the DC-3, specially equipped with the latest avionics for Antarctic operations and specially designed skis for landing on snow and ice.



“Flights by a ski-plane to a massive Emperor penguin colony and the Geographic South Pole make for lifetime memories.”

~ Robb Report

EMPEROR PENGUIN COLONY





CLICK TO SEE EMPEROR PENGUIN VIDEO



NOVEMBER

Thousands of fluffy chicks begin to step off parents' feet

DECEMBER

As they grow chicks begin to lose their down feathers

JANUARY

Late in the month the colony begins to return to the sea



Your visit to the penguins begins with a 2.5-hour flight to Atka Bay. At the colony's height in November/December, you'll see over 14,000 breeding pairs and their newly hatched chicks - a spectacle full of noise and energy that is a favourite with wildlife watchers and photographers.

There are so few visitors to this colony that the chicks are unafraid of humans and often waddle close by. Mindful of our responsibility to the wildlife and of IAATO guidelines, we keep at least 5m (16.4ft) from the Penguins. Looking in every direction, all you'll see is a vast icy expanse contrasting the penguins' shimmering feathers.



ACTIVITIES AT WHICHAWAY

- Exploring iridescent ice tunnels and waves
- Ice-climbing and abseiling
- Trekking, hiking and ropewalks
- Glacier and nunatak hike
- Massage and Polar sauna

Every trip to Antarctica is unique. With your group, choose to embark on ice-climbing, hikes to summit a nearby nunatak or abseiling under the expert guidance of our award-winning UIAGM mountain guides.



[CLICK TO VIEW ACTIVITIES AT WHICHAWAY](#)



“White Desert is a marvel of vision and logistics, like something out of a James Bond film. You can’t believe someone actually made this happen; it seems so far-fetched.”

~ VOGUE



WELLNESS

A trip to Antarctica is the perfect opportunity to disconnect from daily life and surrender to the solitude. The backdrop of Antarctica lends itself to personal practises of mindfulness and we also have wellness practitioners as part of our team, on hand to guide you in relaxation techniques and yoga.

Our sauna sits beside a serene freshwater lake and dramatic glacial ice fall.





YOUR SAFETY, OUR PRIORITY

Across Antarctica's icebound terrain, nature reigns supreme.

For all its beauty, Antarctica can be a challenging environment, with low temperatures, strong winds and high altitudes. We know the best way to protect you is with specialist staff. We have over 100 team members on ice, and we are uncompromising about the experience and expertise of our people. You can trust them to keep you safe on every step of your journey.

All our mountain guides have completed the strenuous 5-year UIAGM qualification, while each camp has its own fully qualified trauma doctor and accompanying medical kits. Our chief pilot has over 10 years of experience flying in Antarctica with over 18,000 hours of logged flight time.

Tracking, satellite communications and mutual Search & Rescue agreements are all part of White Desert's comprehensive safety policies.

Furthermore, by operating our own aircraft, we also have the speed and flexibility to arrange an evacuation back to Cape Town in the unlikely event that one should become necessary.



INCLUSIONS / EXCLUSIONS

GUESTS: 12 MAXIMUM

FITNESS: ★★☆☆☆

FLIGHT TO ANTARCTICA: 5HRS

FLIGHT TO PENGUINS: 2.5HRS

INCLUDED

- Safety briefing (return transfers provided)
- Return transfers for Antarctica flights
- Return flight to Antarctica (inc. 23kg for hold luggage and 7kg for hand luggage)
- All accommodation, food and drinks (including all alcohol) in Antarctica
- All guiding fees, support of field guides and logistics staff
- The use of certain items of polar clothing, as denoted on equipment list
- Payment by White Desert Ltd of a 'Carbon Tax' for offsetting emissions created by all logistics associated with Antarctic travel

EXCLUDED

- Commercial flights to and from Cape Town, South Africa
- Accommodation and meals whilst in Cape Town
- Polar clothing (you will be sent a tailored kit list in advance of your trip to help you purchase the necessary items)
- Comprehensive insurance cover (White Desert staff can advise you as to the appropriate cover required)
- Additional expenses incurred in Cape Town due to any delay
- Additional baggage costs over the agreed amount
- Use of a satellite phone whilst in Antarctica



“White Desert is also keenly mindful of the environment: not only has the company been carbon neutral since 2007, it supports scientific research in cooperation with various nations’ bases around its camps. It’s somehow as human yet as unusual an experience as one can imagine.”

~ VOGUE





WHITE DESERT

ANTARCTICA

COME EXPLORE.

WWW.WHITE-DESERT.COM

