



WHITE DESERT

ANTARCTICA



Est. 2005

CELEBRATING 20 YEARS

‘White Desert is a marvel of vision and logistics, like something out of a James Bond film. You can’t believe someone actually made this happen; it seems so far-fetched.’

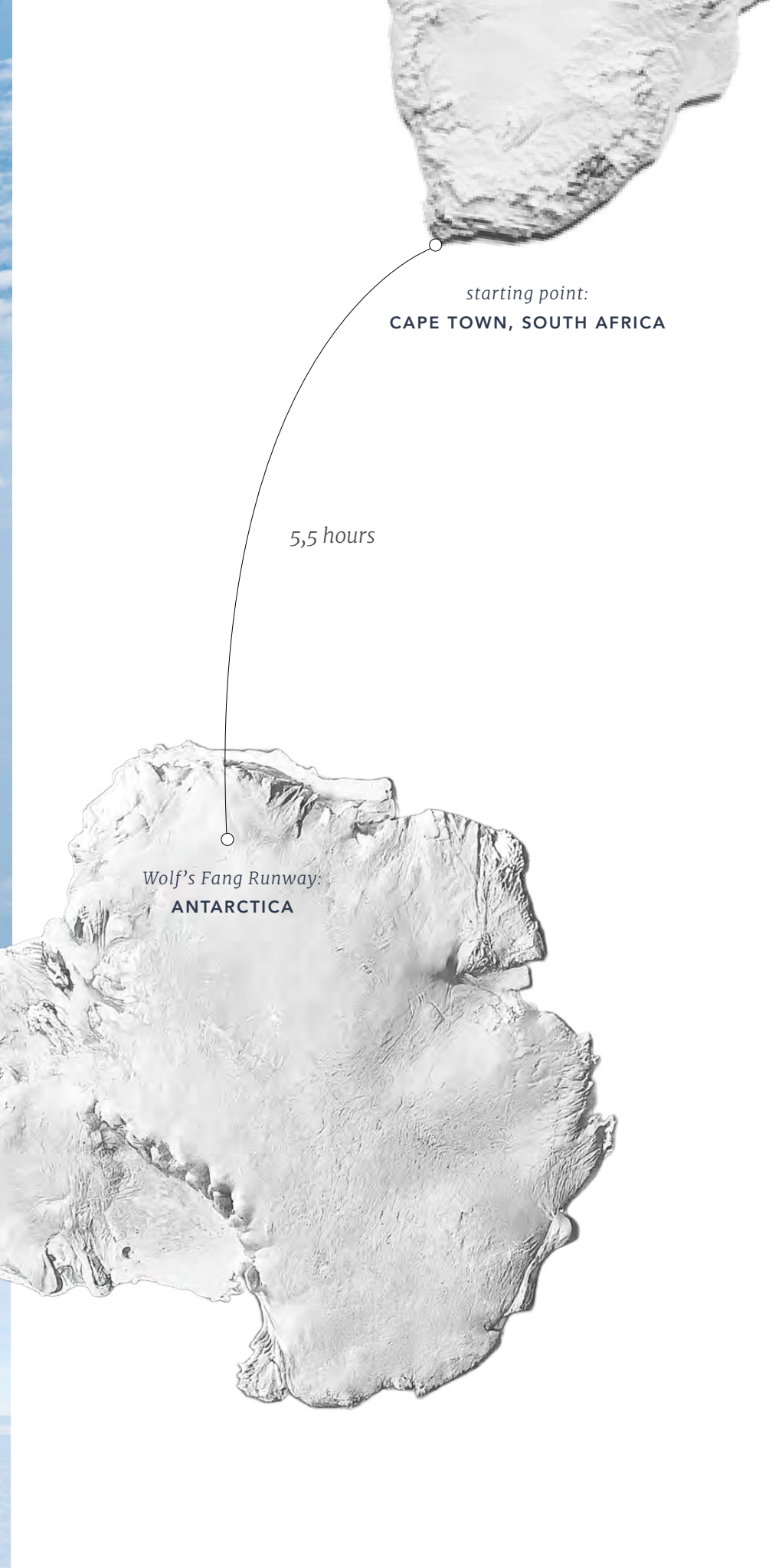
— VOGUE

TRAVEL TO THE LAST CONTINENT

White Desert operates for just 11 weeks a year — Antarctic summer — when the conditions are most hospitable.

In a feat of engineering, your journey to the 7th continent is aboard a “heavy” — an Airbus A340 plane commissioned by White Desert. This plane allows us to transport guests, much-needed supplies and cargo.

During the flight, you’ll soar above thousands of icebergs and over the ice shelf, landing in 24 hours of continuous sun, where time is just a concept.



GREATEST DAY ACTIVITIES

ICE CAVES



ABSEILING



ICE BAR



YOUR SAFETY, OUR PRIORITY

For all its beauty, Antarctica can be a challenging environment, with low temperatures, strong winds and high altitudes. We know the best way to protect you is with specialist staff. We have over 100 team members on ice, and we are uncompromising about the experience and expertise of our people. You can trust them to keep you safe on every step of your journey.

All our mountain guides have completed the strenuous 5-year UIAGM qualification, while each camp has its own fully qualified and equipped wilderness doctor.. Our chief pilot has over 10 years of experience flying in Antarctica with over 18,000 hours of logged flight time.

Tracking, satellite communications and mutual Search & Rescue agreements are all part of White Desert's comprehensive safety policies.

Furthermore, by operating our own aircraft, we also have the speed and flexibility to arrange an evacuation back to Cape Town in the unlikely event that one should become necessary.



SUSTAINABILITY

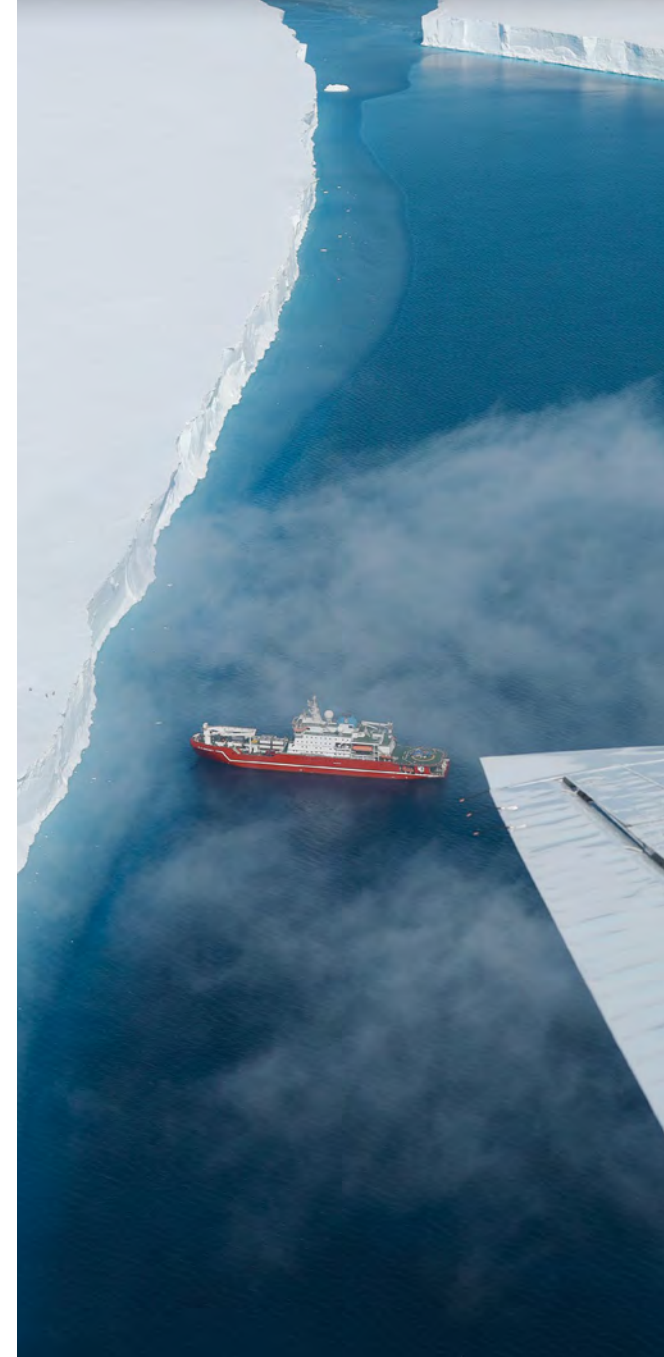
White Desert believes that responsible tourism is a genuine force for good. We support Sir David Attenborough's stance on the transformative power of first-hand travel knowledge: *'No one will protect what they don't care about, and no one will care about what they have never experienced'*.

Mindful of the delicate Antarctic environment, our experiences are designed to leave no trace on the glacial landscape. Sustainable practices are implemented across every aspect of our operation. There are few places on earth that can provide such potential for personal growth and a change in perspective — simply through visiting. Our guests often leave Antarctica forever changed, returning home as ambassadors for our planet.



CARBON NEUTRAL

White Desert was the first aviation operator in Antarctica to be entirely Carbon Neutral, a status the company has held since 2007. Your entire trip with us is fully offset.



WASTE MANAGEMENT

We minimise waste by repackaging all consumables before bringing them to Antarctica. At season's end, all solid waste is shipped back to South Africa for recycling or responsible disposal.



WHITE DESERT FOUNDATION

The new White Desert Foundation is committed to tackling climate change through supporting scientific research in Antarctica as well as investing in cutting-edge Blue Carbon initiatives in South Africa.

20 YEARS OF ANTARCTIC OPERATIONS

Established in 2005, White Desert now employs over 150 people from 18 different nationalities, including doctors, pilots, physiotherapists, chefs, mechanics, engineers and IFMGA high-mountain guides.

The on-ice infrastructure now includes two Basler BT-67s, one Twin Otter, 10 Snow Groomers, 3 Arctic Trucks, 22 Skidoos, and a 216-panel solar sled farm offering a seamless guest experience in one of the most remote environments on Earth.



2002
Patrick completes his first World Record expedition in Antarctica: The youngest and fastest team to reach the South Pole.

2005
White Desert’s first guests arrive in Antarctica flying in the back of an old Russian cargo plane, landing at the Russian Science Base.

2012

Whichaway Camp opens with the first iteration of the unique pod-style accommodation.



The camp now serves up to four groups of guests in a season.

2016




The British Foreign Office grants permission for White Desert to reopen the ice runway known today as Wolf’s Fang. White Desert’s first ski-equipped Basler BT-67 arrives at Wolfs Fang Runway.

2021

The first to fly large commercial aircraft into Antarctica — an Airbus A340-300 — comes to Wolf’s Fang Runway...



2024



White Desert launches its own foundation focussed on Blue Carbon projects.


2004

During Patrick’s second World Record trip, the idea for White Desert was born.



2007

White Desert obtains carbon neutral certification, offsetting all operational emissions — and continues the practice to this day.




2015

The team discovers an abandoned Norwegian ice runway called Blue One, which has the ideal characteristics for a private runway...


2017

White Desert completes 25 intercontinental flights using a Gulfstream 550; now offers exclusive flights to the Atka Bay penguin colony.



2022

Echo Base opens. White Desert becomes the first Antarctic operator to trial Sustainable Aviation Fuel on the continent.



2025

Whichaway will reopen with glass conservatories and private showers in each pod.

AS FEATURED IN...

TRAVEL & LEISURE:
Global Vision Awards 2025



TIME MAGAZINE:
World's Greatest Places 2024



CONDÉ NAST TRAVELLER:
Readers Choice Awards 2023 & 2024





COME EXPLORE

ENQUIRE NOW



‘Our visit to Antarctica and the South Pole was a signature thrill of a lifetime. We were awed to stand at the bottom of the world and experience a beauty and remoteness that is more physical than any other place we have visited on the planet.

White Desert’s world-class team provided very high standards of safety, quality, and delivery. Most importantly, we were impressed by the stewardship of the entire White Desert team to preserve this very unique place by helping build a growing ecosystem of science and sustainable tourism.’

— Scott & Kathryn E.