

# THE EXPLORER ACADEMY

2019



On this four-day adventure, White Desert offers you the opportunity to learn from one of the most experienced and accomplished polar explorers of our time - Ben Saunders.

PRICE PER PERSON : US\$38,500



## BEN SAUNDERS

Ben Saunders is a polar explorer, endurance athlete and motivational speaker who has covered more than 7,000km of Arctic and Antarctic terrain in the past two decades.

As the leader of the longest human-powered polar journey in history, Ben will impart his incredible knowledge of what it takes to survive in Antarctica and teach you the skills of a true Polar Explorer







CAPE TOWN  
SOUTH AFRICA

WHICHAWAY CAMP

WOLF'S FANG RUNWAY

GEOGRAPHIC SOUTH POLE

## FLIGHTS

Flight to Antarctica:  
5 hours

Flight from Wolf's Fang Runway  
to Whichaway Camp:  
25 minutes



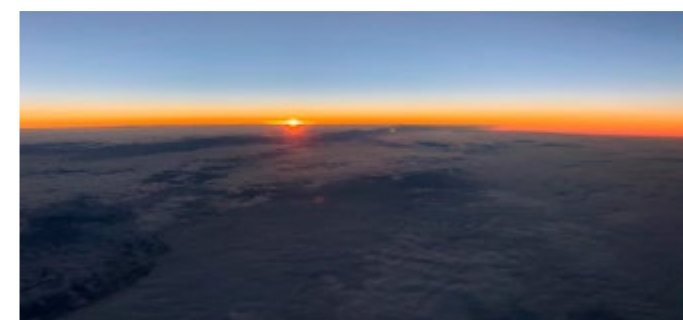
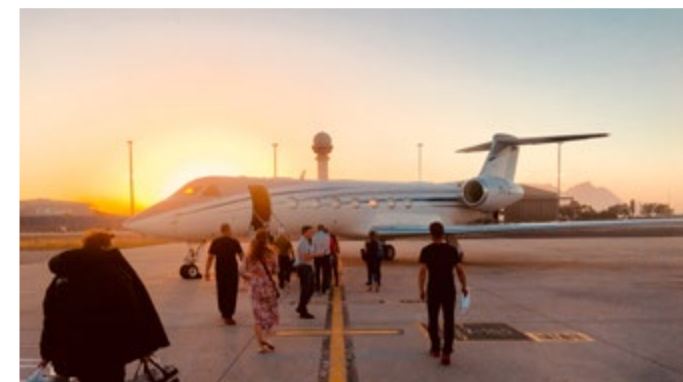


# TRAVEL

## SOUTH AFRICA TO ANTARCTICA

We travel in uncompromised comfort across the mighty Southern Ocean in a Gulfstream private jet. During the 5 hour flight, the African night turns to day as we soar over thousands of icebergs and pass into 24 hours of continuous sunshine. Destination: Wolf's Fang runway.

CLICK TO VIEW  
LANDING ON  
WOLF'S FANG  
RUNWAY







Stepping onto the ice for the first time can literally take your breath away. The incredible vista of the Drygalski range offers an awe-inspiring start to your expedition.

You will spend the day amongst these giants, learning the basics of cross-country skiing and summiting a small peak, before a short flight to our luxury camp - Whichaway.





*“A home away from home. It isn’t complete without mentioning the hospitality and dedication of the White Desert team.”*

*Fitria Yusuf*

CLICK TO VIEW VIDEO OF CAMP



70° 45' 49" S 11° 36' 59" E

## WHICHAWAY CAMP



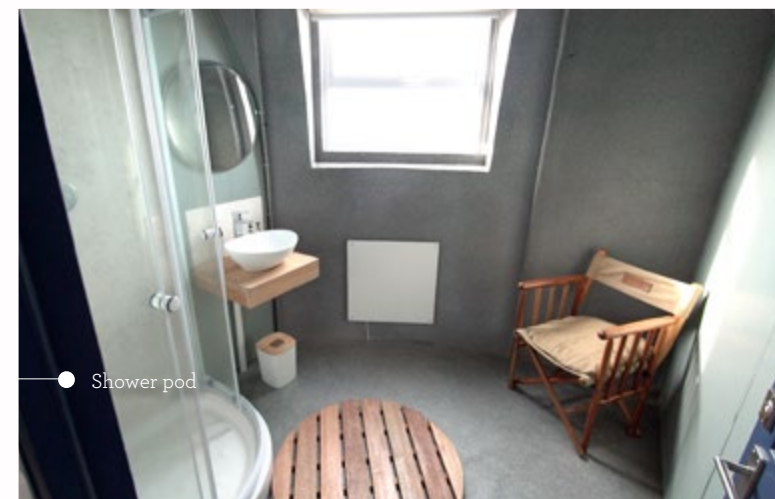
*“The perfect balance between polar  
functionality and luxury camp comfort.”*

*Rick Garratt*

● Bedroom Pod



● Bedroom with en suite



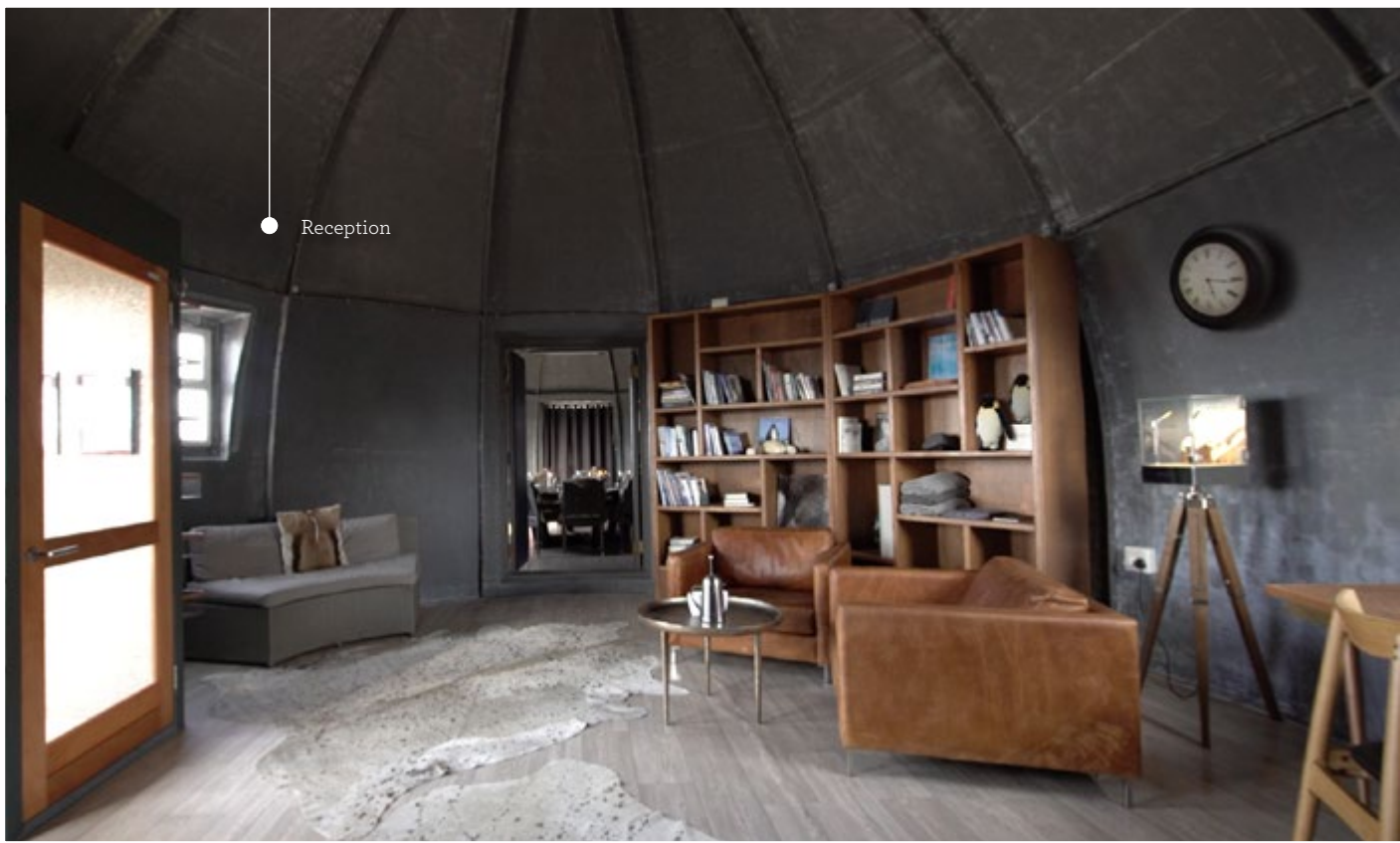
● Shower pod

Whichaway camp is totally unique and the perfect base from which to start your adventure.

There are seven state-of-the-art sleeping pods that are heated and designed for two people in each. They are spacious, with a writing desk, wash area and toilet.

For guests travelling separately, the room can be partitioned for privacy.





The rest of the camp comprises a shower pod, kitchen and three centralised pods that make up the reception, lounge and dining room. While the exterior is made from cutting edge materials, the interior has an old-world feel with rich textures. Here you can relax, enjoy the fantastic food from our award-winning chef and take things easy.



A full-page background image showing a person in a blue jacket and orange helmet climbing a steep, icy mountain slope. The person is using a rope and is positioned in the lower right corner. The background is a vast, icy landscape with large ice formations and a blue sky. The overall color scheme is dominated by blues and whites, with a teal overlay on the left side.

## DAILY ACTIVITIES





**ARCTIC TRUCKS** - The most effective and versatile vehicle in the polar regions is the Arctic Truck 6x6. You will learn the nuanced skills of handling one of these machines on the glaciers and rocks of the Schirmacher Oasis.



**GLACIER TRAVERSE** - Learn how to glacier traverse skills using crampons and ice axes. Crevasses pose one of the great dangers of exploring in Antarctica and Ben will explain the basics of rope work and polar safety.



**ICE CLIMBING** - Antarctica is the last frontier with many unclimbed peaks waiting to be conquered. Learn how to scale walls of ice in this most extraordinary environment.

**CRYSTAL CAVES** - Should the weather turn the only opportunity for shelter is in the ice caves. Explore a stunning network of caves that are unique to this region.







**PACKING THE PULKA** - When man-hauling to the pole, your sled is your lifeline. Everything you need will have to fit inside your sled and Ben will teach you how to stay warm and comfortable for your night's camp out.

**POLAR NUTRITION** – In this extreme environment your body will burn calories at a tremendous rate. Using the latest dehydrated food we will teach you to eat well despite the conditions.



**CAMP OUT** - The trip will culminate in a night camping out on the glacier. The perfect opportunity to put your polar skills to the test and appreciate what it takes!





*“It is not down in any map; true places never are.”*  
*Herman Melville*





*“It is a beautiful place whose description defies words, and I count myself lucky to have trekked across its hallowed ice and rocks. Although this was my first trip to the “bottom of the world,” I surely hope that it will not be my last..”*  
US Astronaut, Terry Virts

PRICE : US\$38,500 PER PERSON
CLIENTS : 12 MAXIMUM
FITNESS : BASIC LEVEL REQUIRED
FLIGHT TO ANTARCTICA : 5 HOURS

### INCLUDED

1. Safety briefing in Cape Town.
2. Return transfers for Antarctica flights.
3. Return flight to Antarctica (inc. a 30kg baggage allowance).
4. All accommodation, food and drink (including all alcohol) in Antarctica.
5. All guiding fees, support of field guides and logistics staff.
6. The use of certain items of polar clothing, as denoted on equipment list.
7. Payment by White Desert Ltd of a ‘Carbon Tax’ for offsetting emissions created by all logistics associated with Antarctic travel.



### EXCLUDED

1. Commercial flights to and from Cape Town, South Africa
2. Accommodation and meals whilst in Cape Town (please note, these can be organised through our Cape Town office).
3. Polar clothing (please note, these items can be purchased on your behalf by a member of White Desert team).
4. Comprehensive insurance cover. (White Desert staff can advise you as to the appropriate cover required.)
5. Additional expenses incurred in Cape Town due to any delay.
6. Additional baggage costs over the agreed amount.
7. Cost of the use of a satellite phone whilst in Antarctica.



# FULL ITINERARY

## DAY BEFORE DEPARTURE

White Desert will host a safety briefing in Cape Town. This is where we will check all your polar clothing and prepare you for your flight south.

## DAY ONE

The flight to Antarctica is 5 hours, crossing the thousands of icebergs spread over the southern ocean. Halfway through the flight we cross into the polar circle and into 24 hours continuous daylight.

Landing on the specialist ice runway, you will be surrounded by the Wolf's Fang range, a true spectacle of the continent. We spend the afternoon amongst kilometre-high monoliths of rock, before connecting to Whichaway camp.

## DAY TWO

Ben will draw on his polar experience to teach you how to survive, and even be comfortable, in Antarctica.

Our first adventure begins at the base of a stunning 'nunatak' mountain. With crampons on your feet and ice-axes in your hands, we will scale a vertical wall of ice and 'top out' on the summit.

Returning from the summit, you will be collected by a fleet of Arctic truck 6x6 vehicles and discover just how capable these machines are in this environment. Learn to drive on incredible routes over seemingly impossible terrain!

## DAY THREE

### Tonight we camp out!

To prepare you, Ben will help you pack your sled and ensure you are ready for one of the most remote campsites on earth. We will cross-country ski (or walk) into the mountains, passing huge cliff faces, wind scoops and iridescent blue ice.

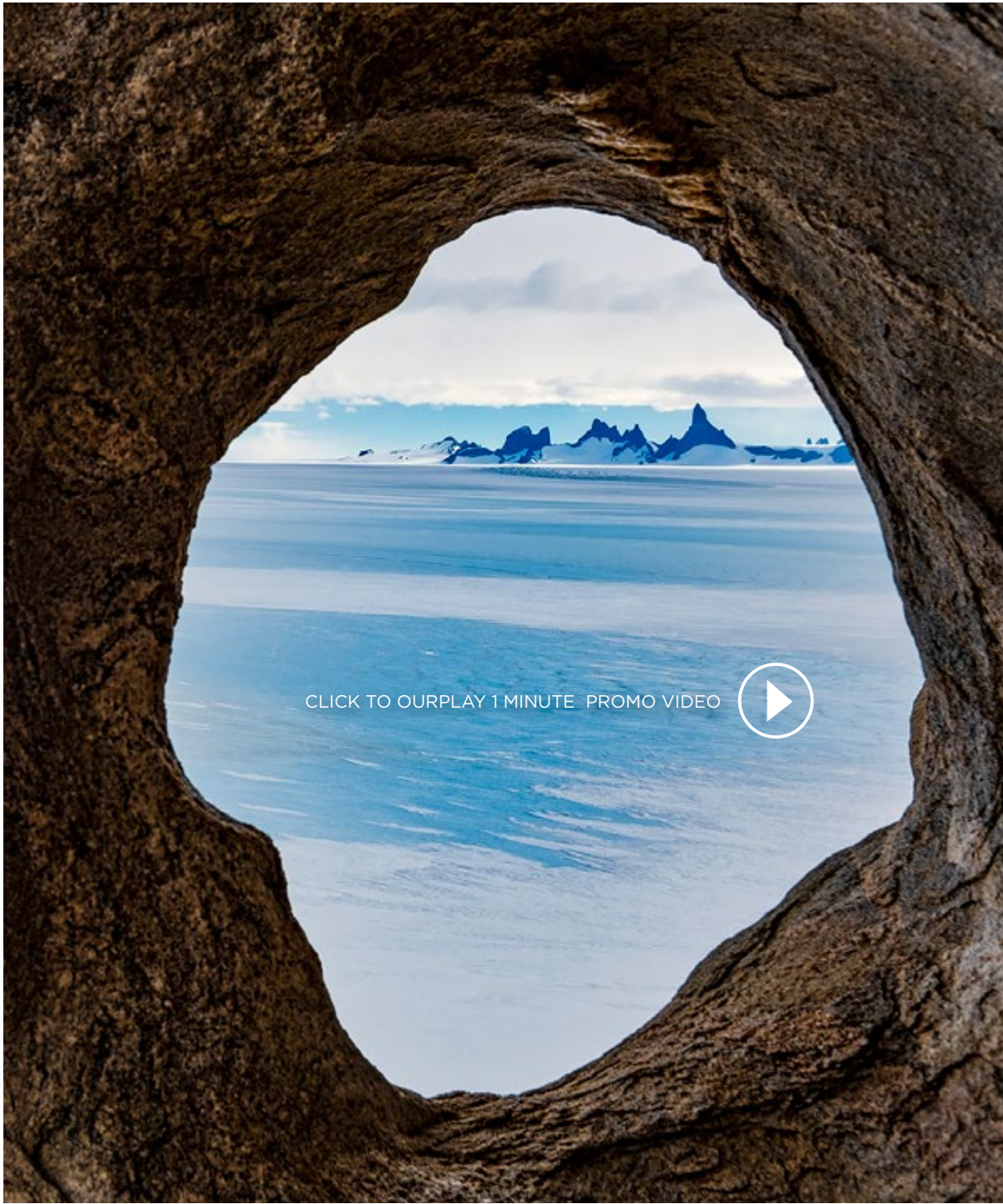
As you zip the door of your tent closed, you will experience what it is like to be a true explorer.

## DAY FOUR

We delve into the ice tunnels and caves near Whichaway camp, where the white landscape betrays nothing of the extraordinary environment just beneath the surface. Created by melt water, the caves extend for hundreds of metres and are a magical place to explore.

Later that day, we climb across a 200ft rock face that overlooks the ice waves. While the walk is not technically difficult it might get the adrenaline pumping, and will prove the perfect way to complete this unique experience.

*This itinerary is entirely subject to weather conditions in Antarctica and is meant as a day-by-day guide of what clients can expect. Exact dates and types of plane may vary.*



CLICK TO OURPLAY 1 MINUTE PROMO VIDEO

Images courtesy of White Desert team, Terry Virts & Marko Prezelj





JOIN ME ON AN UNFORGETTABLE JOURNEY. COME EXPLORE!

FOR FURTHER INFORMATION PLEASE CONTACT US ON [info@white-desert.com](mailto:info@white-desert.com)

FOR AVAILABLE DATES [CLICK HERE](#)

[www.white-desert.com](http://www.white-desert.com)