



EARLY EMPERORS

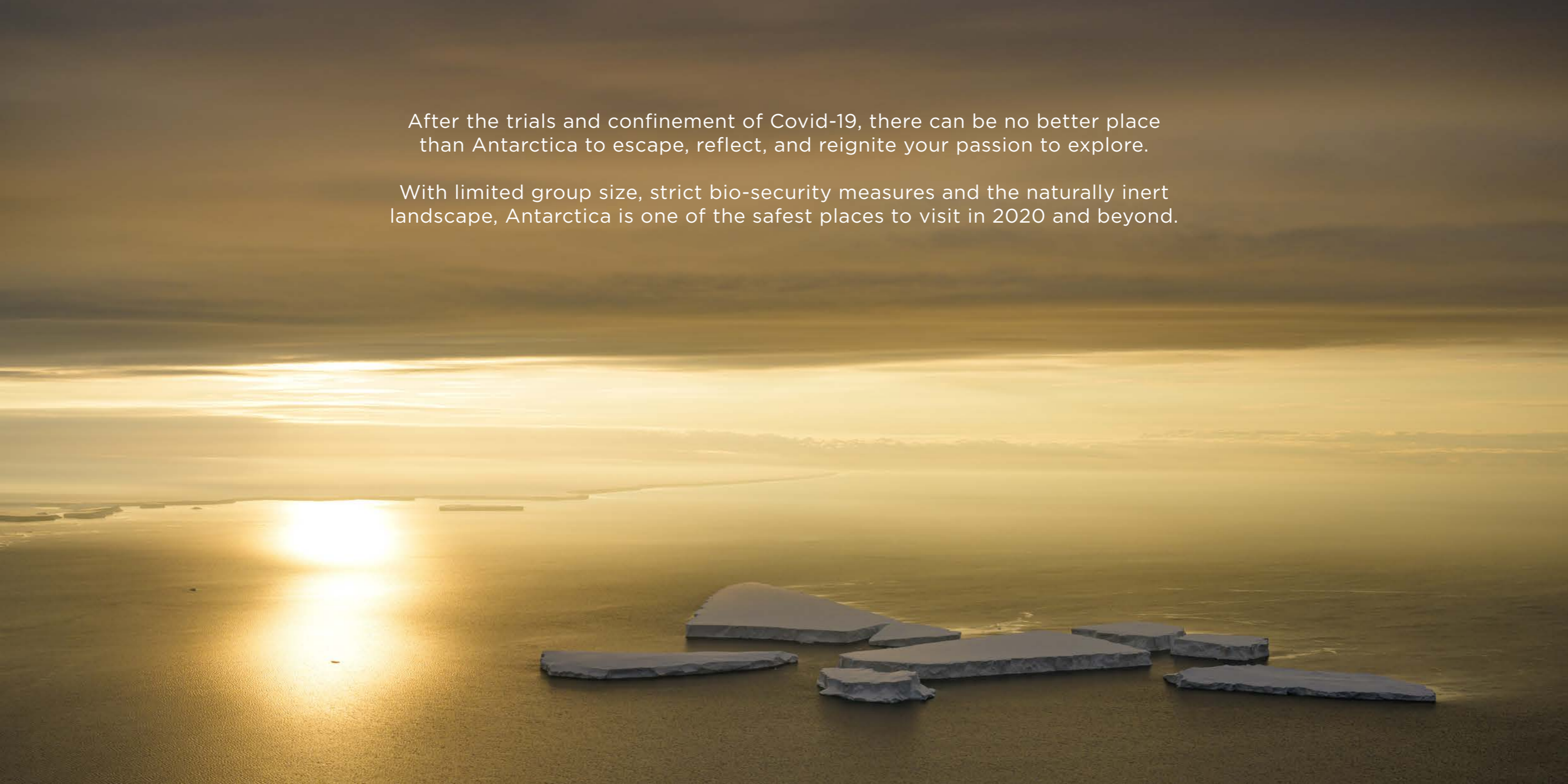
WHICHAWAY | ANTARCTICA
2020

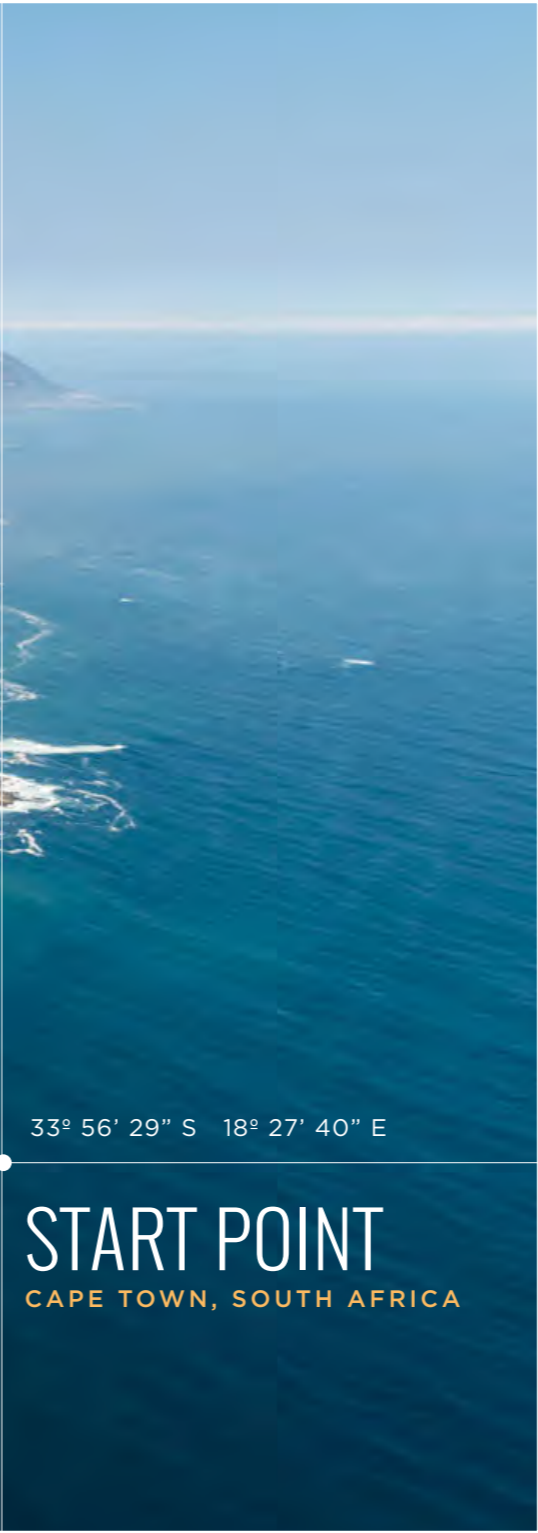
This 5-night trip offers unique access to a magnificent penguin colony when the chicks are taking their first steps off their parent's feet. A wildlife photographer's dream.

PRICE PER PERSON : US\$58,000

After the trials and confinement of Covid-19, there can be no better place than Antarctica to escape, reflect, and reignite your passion to explore.

With limited group size, strict bio-security measures and the naturally inert landscape, Antarctica is one of the safest places to visit in 2020 and beyond.





33° 56' 29" S 18° 27' 40" E

START POINT
CAPE TOWN, SOUTH AFRICA

Often tipped as one of the most beautiful cities in the world, Cape Town is home to award-winning vineyards and stunning ocean vistas.

We will host a safety briefing the day before your scheduled flight where our staff will explain all kit requirements, assist with any last-minute preparations and update you as to the latest weather forecasts in Antarctica.





CAPE TOWN
SOUTH AFRICA

EMPEROR PENGUIN COLONY

WHICHAWAY CAMP

WOLF'S FANG RUNWAY

FLIGHTS

FLIGHT TO WOLF'S FANG,
ANTARCTICA: 5 hours

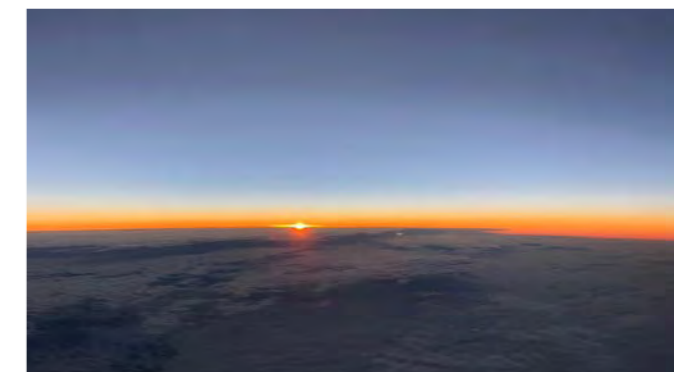
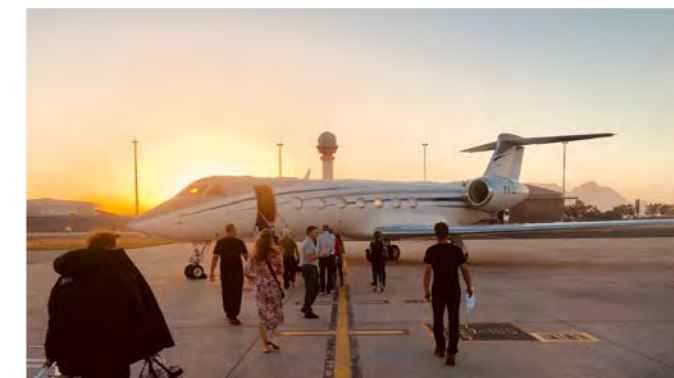
FLIGHT TO EMPEROR
PENGUINS: 2.5 hours



TRAVEL

SOUTH AFRICA TO ANTARCTICA

We travel in uncompromised comfort across the mighty Southern Ocean in a Gulfstream private jet. During the 5 hour flight, the African night turns to day as we soar over thousands of icebergs and pass into 24 hours of continuous sunshine. Destination: Wolf's Fang Runway.



CLICK TO VIEW LANDING ON WOLF'S FANG BLUE ICE RUNWAY



71° 39' 43" S 9° 29' 03" E

WOLF'S FANG RUNWAY

Our runway is overlooked by one of the most magnificent and iconic mountains on the entire continent, so named 'Wolf's Fang' by the early Norwegian explorers. Once on the ground, you will be surrounded by kilometer-high monoliths of rock that rise vertically from the ice.



After touching down in Antarctica, you will be transferred by our DC-3 Basler to our luxury camp. Flight time: 30 minutes.

As part of our commitment to preserving Antarctica, all emissions from flights to, from and whilst on the continent, are offset by fully accredited carbon-neutral schemes.





70° 45' 49" S 11° 36' 59" E

WHICHAWAY CAMP

CLICK TO VIEW VIDEO OF CAMP



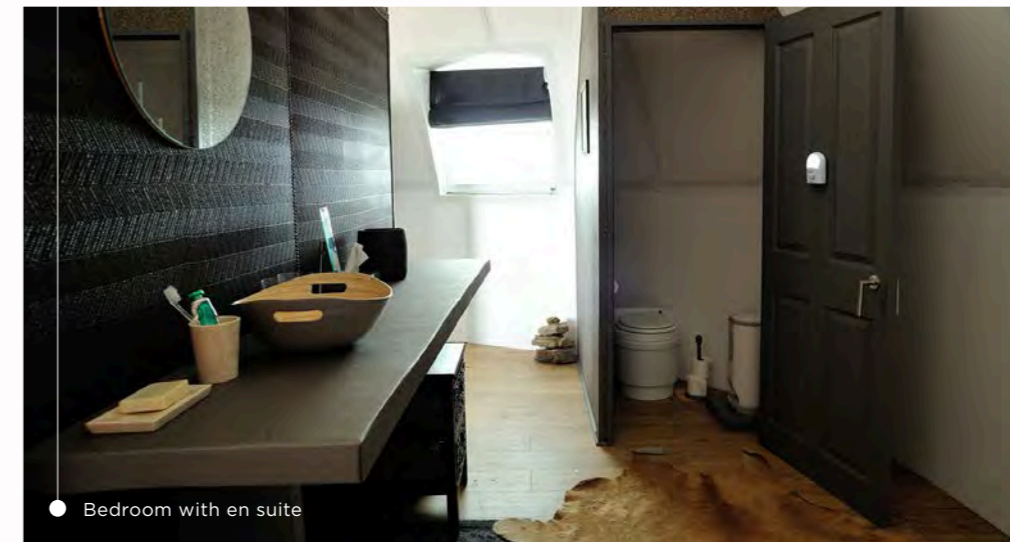
"It is the most beautiful setting I have seen in all of my travels."

Lewis Pugh, OIG - UN Patron of the Oceans



"Whichaway Camp offers the perfect balance between polar functionality and luxury camp comfort."

Rick Garratt, CEO, Home Choice



● Bedroom with en suite



● Shower pod

Whichaway camp is totally unique and the perfect base from which to start your adventure.

There are 7 state-of-the-art sleeping pods that are heated and designed for two people in each. At just over 6 metres (20 feet) in diameter, they are also spacious, with a writing desk, wash area and toilet.

For guests travelling separately, the room can be partitioned for privacy.



CLICK TO VIEW VIDEO OF LOUNGE



Lounge



The rest of the camp comprises a shower pod, kitchen and 3 centralised pods that make up the reception, lounge and dining room. While the exterior is made from cutting-edge materials, the interior has an old-world feel with rich textures. Here, our experienced team of chefs, hosts and guides will take care of every detail, allowing you to relax and enjoy your surroundings.



Reception



The dining table accommodates 14 people and is the ideal space to relive shared adventures and enjoy fine food. Busy days exploring Antarctica are sure to work up an appetite and hearty breakfasts, elegant lunches and three-course dinners will mean you are well-fed whilst staying at the bottom of the world.



70° 38' 16" S 8° 15' 45" W

EMPEROR PENGUIN COLONY



CLICK TO VIEW VIDEO OF EMPERORS



At the beginning of the adventure we fly 2 hours along the coast to an emperor penguin colony of over 14,000 breeding pairs and their newly hatched chicks.

Tourists only rarely visit this colony and, as a consequence, the chicks are unafraid of humans and often waddle close by. Ever mindful of our duty to the Antarctic environment, and in keeping with the IAATO guidelines, we keep our impact on these regal birds as low as possible, never venturing closer than 5 metres. Observing this rare and secluded wildlife spectacle from a respectful distance remains one of the greatest thrills on Earth.

*"What a privilege to witness this wildlife phenomenon.
The Emperor Penguins are almost mystical, it was incredible."*
Rina Tham - Author of internationally published *Lucky Number 9*



CLICK TO VIEW VIDEO OF EMPERORS



After the long huddle of winter, the fathers finally get to go to the water and feed. The chicks have to sit on their parents feet to stay warm and off the ice.

"This was the most incredible trip of my life. The true essence of Inspirational Travel and a dream come true."

Susan Williams, VP Kalalou

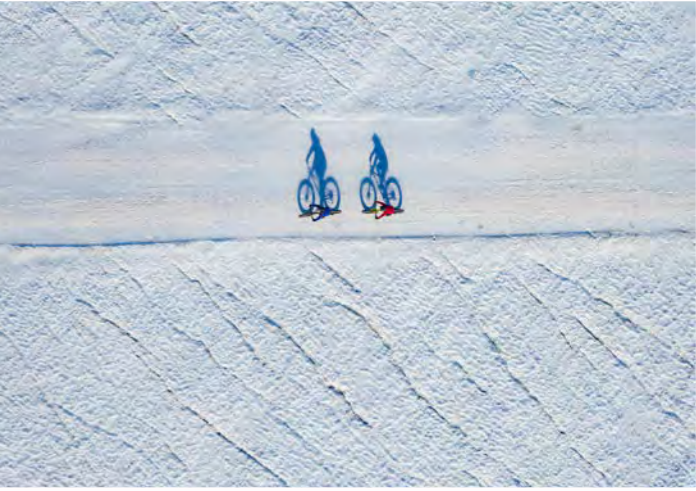


An aerial photograph of a vast, snow-covered mountain range. A bright turquoise stream flows through a deep, snow-filled valley. Several hikers are visible on a snow-covered ridge in the lower right, providing a sense of scale to the massive landscape. The scene is captured in bright daylight, with long shadows cast across the snow.

DAILY ACTIVITIES AT WHICHAWAY CAMP



With up to only 14 clients on each adventure and professional polar explorers as your guides, the day's itineraries are tailored to each individual. Make your choice from gentle treks and picnics overlooking the ice waves, to more adrenaline-fuelled activities.





"It is not down on any map; true places never are."

Melville, Herman (1851) *Moby-Dick*



Between rugged mountain ranges and spectacular frozen waves of ice, our guides will expand your horizons in this wonderland of adventure. Our philosophy is simple – do as much or as little as you like. After all, it's your adventure.

*"Mother nature's raw beauty was breathtaking. We interacted with her,
trekking, climbing and venturing into the amazing tunnels of ice."*
Marshal Bernes, Guest (2018)





“Every once in a while, I think of the thousands of penguins, our home at Whichaway Camp, the food and the challenges I conquered. When my day gets beyond stressful... I smile!”

Karen Gosling, Guest (2018)

CLIENTS: 14 MAXIMUM
FITNESS: NO SPECIFIC LEVEL REQUIRED
FLIGHT TO ANTARCTICA: 5HRS
FLIGHT TO PENGUINS: 2.5HRS EACH WAY
PRICE: \$58,000 pp

INCLUDED

1. Safety briefing (return transfers provided)
2. Return transfers for Antarctica flights.
3. Return flight to Antarctica (inc. a 30kg baggage allowance).
4. All accommodation, food and drink (including all alcohol) in Antarctica.
5. All guiding fees, support of field guides and logistics staff.
6. The use of certain items of polar clothing, as denoted on equipment list.
7. Payment by White Desert Ltd of a ‘Carbon Tax’ for offsetting emissions created by all logistics associated with Antarctic travel.

EXCLUDED

1. Commercial flights to and from Cape Town, South Africa.
2. Accommodation and meals whilst in Cape Town.
3. Polar clothing (you will be sent a tailored kit list in advance of your trip to assist you with purchasing items if required).
4. Comprehensive insurance cover. (White Desert staff can advise you as to the appropriate cover required.)
5. Additional expenses incurred in Cape Town due to any delay.
6. Additional baggage costs over the agreed amount.
7. Cost of the use of a satellite phone whilst in Antarctica.

FULL ITINERARY

DAY
BEFORE
DEPARTURE

White Desert will host a safety briefing in Cape Town. This is where we will check all your polar clothing and prepare you for your flight south.

DAY ONE

We fly to Antarctica (5 hours) and cross thousands of icebergs as we pass over the Southern Ocean. During the flight, we cross into the polar circle and into 24 hours of continuous daylight. Landing on the specialist ice runway, you will transfer to our camp and go for a gentle trek around the oasis.

DAY TWO

Settle into White Desert's 'Whichaway Camp' and do as much or as little as you like each day. Activities range from gentle treks to the incredible ice waves, summiting a nunatak, ice climbing and even abseiling!

After the day's activities you will hear a talk about the incredible life cycle of the Emperor Penguin in preparation for your visit the following day.

DAY THREE

We fly 2 hours across Antarctica, providing immense views of the high Polar Plateau, before landing at the emperor penguin colony.

You will be among the very few who have ever witnessed such a spectacle, observing the real-life stars of "March of the Penguins".

DAY FOUR

We spend the day exploring the ice waves beneath our camp, delving into the series of ice tunnels that are as surreal as they are beautiful.

You will meander back to camp on an Arctic Truck safari, winding your way through the snow and ice to an incredible vantage point where you can take in the panoramic view over the waves that you have just explored.

DAY FIVE

This is an easier day with talks from our polar explorer staff about some of the lesser known history of Antarctica and their world record-breaking expeditions. Then it's time to abseil off the nearby nunatak mountain.

DAY SIX

The flight out of Antarctica will be the last of your enduring Antarctic memories before you delve back into the vibrant energy of Africa. You will be transferred to your hotel where you will have a chance to relax and reflect on your Antarctic adventure!



This itinerary is entirely subject to weather conditions in Antarctica and is meant as a day-by-day guide of what clients can expect. Exact dates and types of plane may vary.





JOIN US ON AN UNFORGETTABLE JOURNEY. COME EXPLORE.

[INFO@WHITE-DESERT.COM](mailto:info@white-desert.com) [CLICK FOR AVAILABLE DATES](#) +1 718 312 8653