



WHITE DESERT
ANTARCTICA



EMPERORS & SOUTH POLE

WHICHAWAY | ANTARCTICA
2020

After the trials and confinement of Covid-19, there can be no better place than Antarctica to escape, reflect, and reignite your passion to explore.

With limited group size, strict bio-security measures and the naturally inert landscape, Antarctica is one of the safest places to visit in 2020 and beyond.



33° 56' 29" S 18° 27' 40" E

START POINT

CAPE TOWN, SOUTH AFRICA

Often tipped as one of the most beautiful cities in the world, Cape Town is home to award-winning vineyards and stunning ocean vistas.

We will host a safety briefing the day before your scheduled flight where our staff will explain all kit requirements, assist with any last-minute preparations and update you as to the latest weather forecasts in Antarctica.





CAPE TOWN
SOUTH AFRICA

EMPEROR PENGUIN COLONY

WHICHAWAY CAMP

WOLF'S FANG RUNWAY

FD83

GEOGRAPHIC SOUTH POLE

FLIGHTS

FLIGHT TO WOLF'S FANG,
ANTARCTICA: 5 hours

FLIGHT TO EMPEROR PENGUINS:
2.5 hours

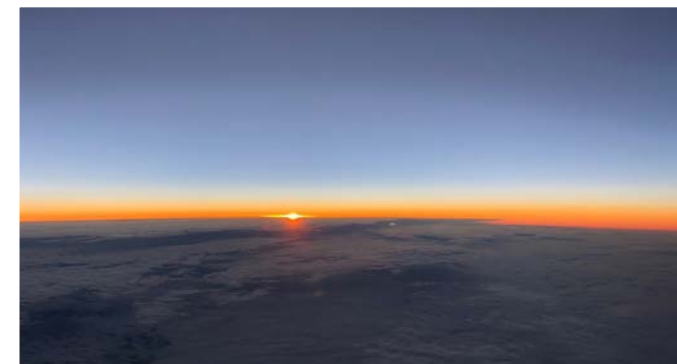
FLIGHT TO SOUTH POLE:
7 hours



TRAVEL

SOUTH AFRICA TO ANTARCTICA

We travel in uncompromised comfort across the mighty Southern Ocean in a Gulfstream private jet. During the 5-hour flight, the African night turns to day as we soar over thousands of icebergs and pass into 24 hours of continuous sunshine. Destination: Wolf's Fang Runway.





71° 39' 43" S 9° 29' 03" E

WOLF'S FANG RUNWAY

Our runway is overlooked by one of the most magnificent and iconic mountains on the entire continent, so named 'Wolf's Fang' by the early Norwegian explorers. Once on the ground, you will be surrounded by kilometer-high monoliths of rock that rise vertically from the ice.



● Gulfstream G550

● Basler BT-67

● Bell 412
Helicopter



After touching down in Antarctica, you will be transferred by our DC-3 Basler to our luxury camp. Flight time: 30 minutes.

As part of our commitment to preserving Antarctica, all emissions from flights to, from and whilst on the continent, are offset by fully accredited carbon-neutral schemes.





70° 45' 49" S 11° 36' 59" E

WHICHAWAY CAMP

[CLICK TO VIEW VIDEO OF CAMP](#)



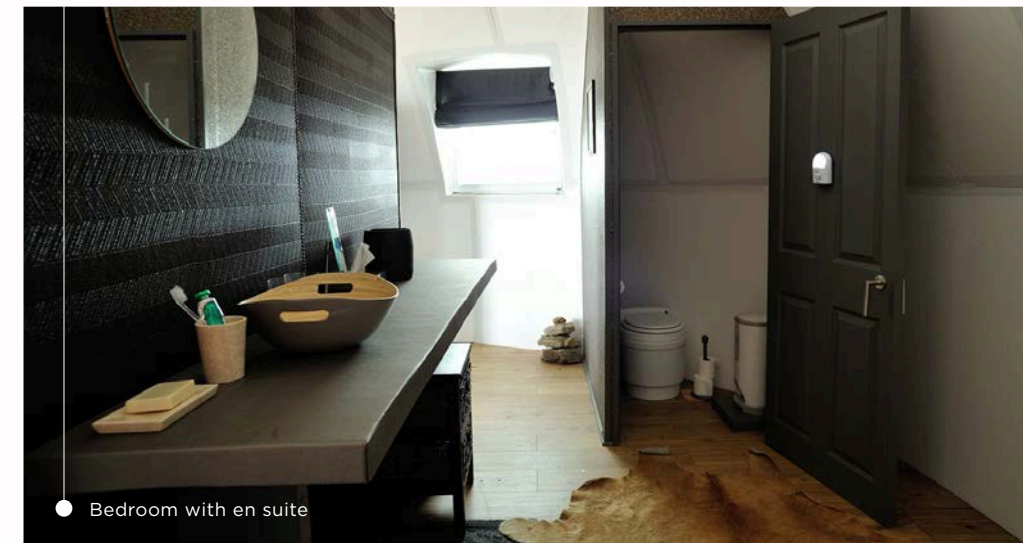
"It is the most beautiful setting I have seen in all of my travels."

Lewis Pugh, OIG - UN Patron of the Oceans



"Whichaway Camp offers the perfect balance between polar functionality and luxury camp comfort."

Rick Garratt, CEO, Home Choice



● Bedroom with en suite



● Shower pod

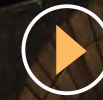
Whichaway camp is totally unique and the perfect base from which to start your adventure.

There are seven state-of-the-art sleeping pods that are heated and designed for two people in each. At just over 6m (20ft) in diameter, they are also spacious, with a writing desk, wash area and toilet.

For guests travelling separately, the room can be partitioned for privacy.

Lounge

CLICK TO VIEW VIDEO OF LOUNGE



Reception



The rest of the camp comprises a shower pod, kitchen and three centralised pods that make up the reception, lounge and dining room. While the exterior is made from cutting-edge materials, the interior has an old-world feel with rich textures. Here, our experienced team of chefs, hosts and guides will take care of every detail, allowing you to relax and enjoy your surroundings.



The dining table accommodates 14 people and is the ideal space to relive shared adventures and enjoy fine food. Busy days exploring Antarctica are sure to work up an appetite and hearty breakfasts, elegant lunches and three-course dinners will mean you are well-fed whilst staying at the bottom of the world.

TRAVEL WITHIN ANTARCTICA

WITH THE DC-3 BASLER

The planes are equipped with the latest avionics and ski-equipped for landing on snow





70° 38' 16" S 8° 15' 45" W

EMPEROR PENGUIN COLONY

*"What a privilege to witness this wildlife phenomenon.
The Emperor Penguins are almost mystical, it was incredible."*

Rina Tham - Author of internationally published *Lucky Number 9*

[CLICK TO VIEW VIDEO OF EMPERORS](#)



At the beginning of the adventure we fly 2 hours along the coast to an emperor penguin colony of over 14,000 breeding pairs and their newly hatched chicks.

Tourists only rarely visit this colony and, as a consequence, the chicks are unafraid of humans and often waddle close by. Ever mindful of our duty to the Antarctic environment, and in keeping with the IAATO guidelines, we keep our impact on these regal birds as low as possible, never venturing closer than 5m. Observing this rare and secluded wildlife spectacle from a respectful distance remains one of the greatest thrills on earth.

90° South

THE GEOGRAPHIC SOUTH POLE



[CLICK TO SEE VIDEO OF SOUTH POLE](#)





----- WHICHAWAY CAMP ----- 5 hours ----- 83°S OVERNIGHT CAMP ----- 2 hours ----- SOUTH POLE ----- 2 hours ----- 83°S OVERNIGHT CAMP ----- 5 hours ----- WHICHAWAY CAMP -----

It is a total of 2,400km from Whichaway Camp to the South Pole. The first part of the journey is a 5 hour flight to a refueling stop at 83°S. This flight ascends rapidly to an altitude of approximately 3,000m and remains at that height for the majority of the journey.

We stop for 1 hour to refuel and then continue another 2 hours to the South Pole itself. There is a true sense of remoteness at this point where, for as far as the eye can see, the white horizon meets the pure blue sky.

The South Pole, the bottom of the earth and the holy grail of early explorers. At the designated marker there is no more east, south or west on the planet, only north, and you will be able to walk around the world in just a few paces!

We fly back to our wilderness camp at 83°S to overnight. Join the select few who have ever spent a night in the beauty of the high polar plateau. You will be well looked after as we experience camping in one of the wildest places on earth.

After a night spent as a true explorer, we fly back to our main camp and celebrate your momentous journey.

A photograph of an ice cave with a stream and people. The cave's interior is illuminated with blue and purple lights, creating a surreal atmosphere. The walls and ceiling are covered in intricate ice formations, including stalactites and stalagmites. A stream flows through the center of the cave, reflecting the ambient light. Several people are visible in the distance, some standing on the ice and others near the stream. The overall scene is a mix of natural beauty and human activity.

DAILY ACTIVITIES AT WHICHAWAY CAMP



[CLICK TO VIEW VIDEO OF ICE TUNNEL](#) 

With up to only 14 clients on each adventure and professional polar explorers as your guides, the day's itineraries are tailored to each individual. Make your choice from gentle treks and picnics overlooking the ice waves, to more adrenaline-fuelled activities.





"It is not down on any map; true places never are."

Melville, Herman (1851) *Moby-Dick*



Between rugged mountain ranges and spectacular frozen waves of ice, our guides will expand your horizons in this wonderland of adventure. Our philosophy is simple - do as much or as little as you like. After all, it's your adventure.

*"Mother nature's raw beauty was breathtaking. We interacted with her,
trekking, climbing and venturing into the amazing tunnels of ice."
Marshal Bernes, Guest (2018)*





“Every once in a while, I think of the penguins and the pole, Whichaway Camp, the food and the challenges I conquered. When my day gets beyond stressful... I smile!”

Karen Gosling, Guest (2018)

CLIENTS: 14 MAXIMUM

FITNESS: NO SPECIFIC LEVEL REQUIRED

FLIGHT TO ANTARCTICA: 5HRS

FLIGHT TO SOUTH POLE: 7HRS EACH WAY

PRICE: \$92,500 pp

INCLUDED

1. Safety briefing (return transfers provided)
2. Return transfers for Antarctica flights.
3. Return flight to Antarctica (inc. a 30kg baggage allowance).
4. All accommodation, food and drink (including all alcohol) in Antarctica.
5. All guiding fees, support of field guides and logistics staff.
6. The use of certain items of polar clothing, as denoted on equipment list.
7. Payment by White Desert Ltd of a ‘Carbon Tax’ for offsetting emissions created by all logistics associated with Antarctic travel.

EXCLUDED

1. Commercial flights to and from Cape Town, South Africa.
2. Accommodation and meals whilst in Cape Town.
3. Polar clothing (you will be sent a tailored kit list in advance of your trip to assist you with purchasing items if required).
4. Comprehensive insurance cover. (White Desert staff can advise you as to the appropriate cover required.)
5. Additional expenses incurred in Cape Town due to any delay.
6. Additional baggage costs over the agreed amount.
7. Cost of the use of a satellite phone whilst in Antarctica.

FULL ITINERARY

This itinerary is entirely subject to weather conditions in Antarctica and is meant as a day-by-day guide of what clients can expect. Exact dates and types of plane may vary.

DAY BEFORE DEPARTURE

White Desert will host a safety briefing in Cape Town. This is where we will check all your polar clothing and prepare you for your flight south.

DAY ONE

We fly to Antarctica (5 hours) and cross thousands of icebergs as we pass over the Southern Ocean. During the flight, we cross into the polar circle and into 24 hours continuous daylight. Landing on the specialist ice runway, you will transfer to our camp and go for a gentle trek around the oasis.

DAY TWO

Settle into White Desert's 'Whichaway Camp' and do as much or as little as you like each day. Activities range from gentle treks to the incredible ice waves, summiting a nunatak, ice climbing and even abseiling!

DAY THREE

We fly 2 hours across Antarctica, providing immense views of the high Polar Plateau, before landing at the emperor penguin colony. You will be among the very few who have ever witnessed such a spectacle, observing the real-life stars of "March of the Penguins".

DAY FOUR

We spend the day exploring the ice waves beneath our camp, delving into the series of ice tunnels that are as surreal as they are beautiful.

You will meander back to camp on an Arctic Truck safari, winding your way through the snow and ice to an incredible vantage point where you can take in the panoramic view over the waves that you have just explored.

DAY FIVE**

We will leave early in the morning in the DC-3 Basler plane. We will fly across stunning mountain ranges before landing at 83° South to refuel. You will have a chance to walk around the high Polar Plateau before continuing on to the pole.

At the South Pole itself, you will have lots of time for photos and a chance to stamp your passport before flying back to 83° South to overnight on the plateau.

DAY SIX

After a night spent camping, you will be given a hearty breakfast before boarding the plane once again for the flight back to Whichaway Camp. The flight is the perfect chance to appreciate the immense scale of Antarctica, before you return to our camp for a three-course champagne dinner to celebrate your achievement.

DAY SEVEN

The penultimate day at Whichaway introduces guests to one of the wonders of the oasis. An adventurous hike along a winding cliff face affords guests a breath-taking aerial view of the extraordinary sea waves - ice that has been folded over millennia by constant pressure from the ocean. This challenging hike, led by our world-class mountain guides ensuring your safety at all times, results in an unforgettable day.

DAY EIGHT

The flight out of Antarctica will be the last of your enduring Antarctic memories before you delve back into the vibrant energy of Africa. You will be transferred to your hotel where you will have a chance to relax and reflect on your Antarctic adventure!



** Please bear in mind that the South Pole is situated at an apparent altitude of 4,000m with an approximate ambient temperature of -25°C. Those with pre-conditions for altitude sickness should not choose this option. If you are unsure in any way, please contact White Desert for any advice or further information.


WHITE DESERT
ANTARCTICA



JOIN US ON AN UNFORGETTABLE JOURNEY. COME EXPLORE.

INFO@WHITE-DESERT.COM [CLICK FOR AVAILABLE DATES](#) +1 718 312 8653