



## EARLY EMPERORS

WHICHAWAY OASIS | ANTARCTICA  
2021 - 2022

Join us on an incredible adventure to one of nature's rarest sights – an immense colony of 28,000 Emperor Penguins. Our ability to access the colony early in the season means you'll see the chicks just as they are stepping off their parents' feet. To capture this moment is to witness wildlife at its most extraordinary!

Flying in via Gulfstream jet, you will stay at our luxury camp which nestles beneath a magnificent frozen icefall. With only 12 guests on each departure, the experience is tailored to your needs.

PRICE PER PERSON: US\$58,000

EXCLUSIVE CHARTER (12 PLACES): US\$696,000

# INDEX

---

2

24

5

25

6

26

8

27

10

28

15

29

20





7-Time Winner  
World Travel Awards

# WHITE DESERT & ANTARCTICA

For centuries, the Last Continent has held a special place in our imaginations, yet even now, long after the first explorers reached the South Pole, access to the interior of Antarctica is still only for the very few.

After a five-hour flight from Cape Town, South Africa, we bring you into the heart of Antarctica, a place that is both surreal and majestic. From iridescent ice tunnels to vertical spires of rock, from endless uninhabited horizons to oceans scattered with icebergs, this is a place unlike anywhere else on Planet Earth.

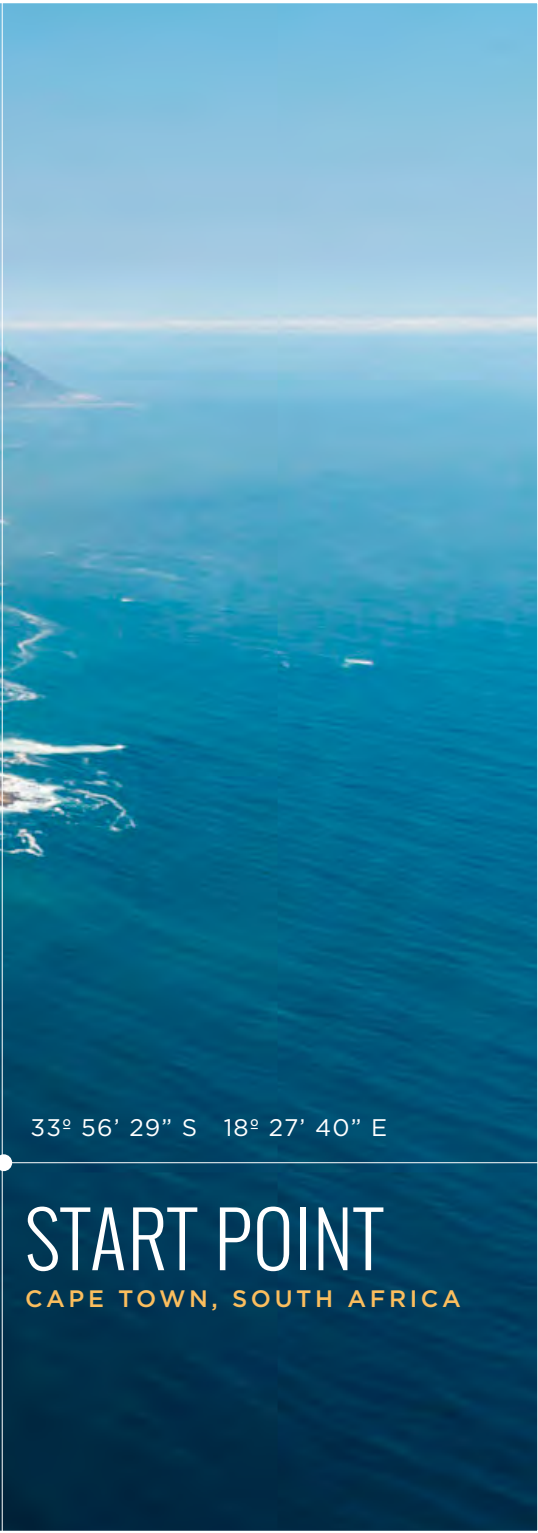
Established 15 years ago by record-breaking polar explorers, White Desert offers you an environmentally-conscious choice for luxury and adventure, sensitive to the incredible environment and animals that surround us.

Come with us on an unforgettable journey. Come explore.

Play our 1-minute  
introductory video







33° 56' 29" S 18° 27' 40" E

START POINT  
CAPE TOWN, SOUTH AFRICA

Often tipped as one of the most beautiful cities in the world, Cape Town is home to award-winning vineyards and stunning ocean vistas.

We will host a safety briefing the day before your scheduled flight where our staff will explain all kit requirements, assist with any last-minute preparations and update you on the latest weather forecasts for Antarctica.







Atlantic  
Ocean

CAPE TOWN  
SOUTH AFRICA

Indian  
Ocean

EMPEROR PENGUIN COLONY

WHICHAWAY OASIS

WOLF'S FANG RUNWAY

Weddell Sea

Bellingshausen Sea

Pacific  
Ocean

# FLIGHTS

FLIGHT TO WOLF'S FANG,  
ANTARCTICA: 5 hours

FLIGHT TO EMPEROR  
PENGUINS: 2.5 hours



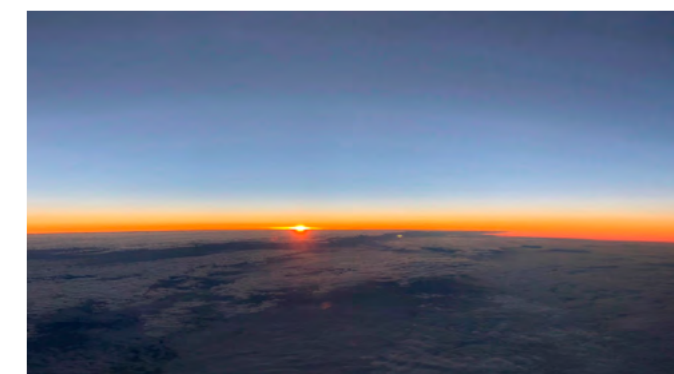
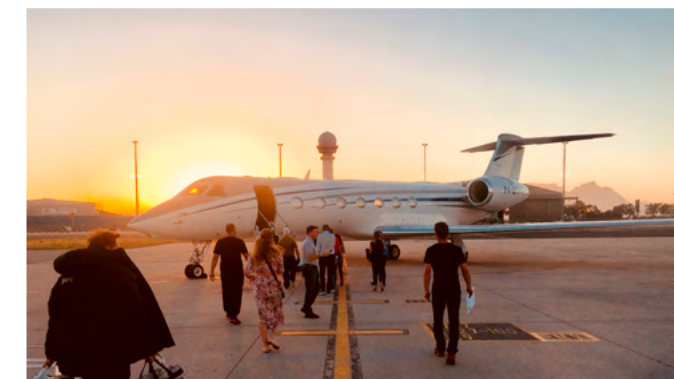


# TRAVEL

## SOUTH AFRICA TO ANTARCTICA

You travel in uncompromising comfort across the mighty Southern Ocean in a Gulfstream 550. During the five-hour flight, the African night turns to the Antarctic day as you soar over thousands of icebergs and pass into 24 hours of continuous sunshine.

Your destination: Wolf's Fang Runway.





CLICK TO VIEW LANDING ON WOLF'S FANG BLUE ICE RUNWAY



71° 39' 43" S 9° 29' 03" E

## WOLF'S FANG RUNWAY

Our runway is overlooked by one of the most magnificent and iconic mountains on the entire continent, named 'Wolf's Fang' by the early Norwegian explorers. After landing on the ancient blue ice, you will be surrounded by massive monoliths of rock that rise vertically from the glacier.







● Gulfstream G550

● Basler BT-67

● Bell 412  
Helicopter



Once in Antarctica, you will be transferred by our Basler BT-67 to our luxury camp at Whichaway Oasis. Flight time: 30 minutes.

As part of our responsibility towards conserving Antarctica, all emissions from our operations, including all flights to, from and within the continent, are offset by fully-accredited carbon-neutral schemes.





*"Crucially, White Desert has put as much thought into environmental impact at Whichaway as it has into comfort.."*

70° 45' 49" S 11° 36' 59" E

## WHICHAWAY OASIS



[CLICK TO VIEW VIDEO OF CAMP](#)



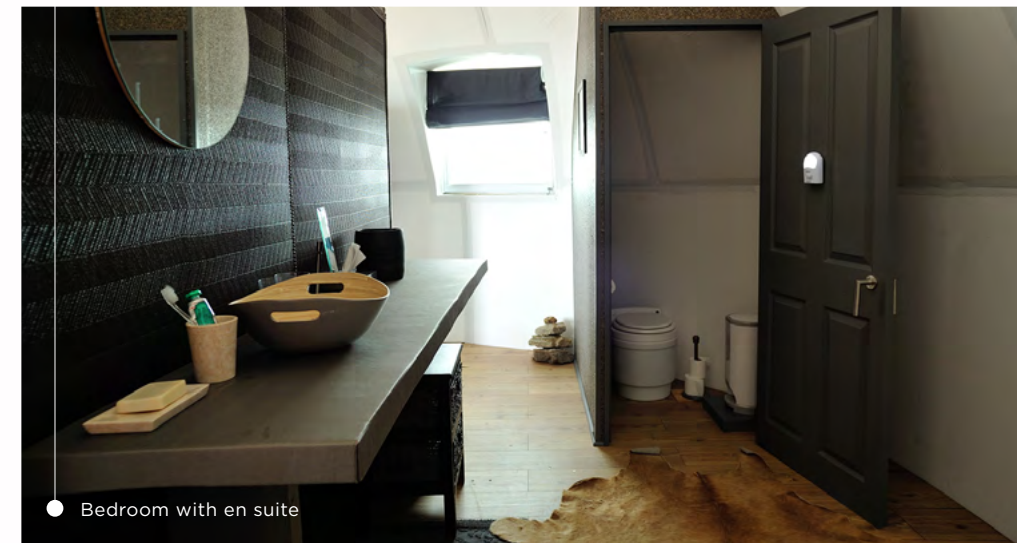
On the edge of the Great White Continent lies the Schirmacher Oasis, an ice-free area that contains over 100 freshwater lakes. This is the site of our unique camp - Whichaway Oasis.

Whichaway consists of a collection of hi-tech polar domes set on the shores of a frozen lake and encircled by a magnificent 60-metre (200-foot) icefall. It is warm and comfortable, and the perfect home base for daily activities or when you simply want to relax.





*"Whichaway Camp offers the perfect balance between polar functionality and luxury camp comfort."* Rick Garratt, CEO, Home Choice



Our camp consists of seven heated and state-of-the-art bedroom pods that are designed for two guests in each. At just over 6m (20ft) in diameter, you'll find they are also spacious, with a writing desk, wash area and toilet.

For guests travelling separately, the pod can be partitioned for privacy.





● Lounge

The rest of the camp comprises a shower pod, kitchen and three centralised pods that make up the reception, lounge and dining room. This is where our experienced team of chefs, hosts and guides will take care of every detail for you, allowing you to focus on enjoying your adventure.

While the exterior of our pods is made from cutting-edge materials, the interiors have a relaxed, old-world feel that harks back to the golden age of Antarctic exploration.



● Reception



*"I never expected to find such delicious food and wine in such a remote place. The chef was nothing short of a miracle worker!"*  
Cathy Mackenzie, Guest



After a busy day of activities, you'll be sure to work up an appetite. Our hearty breakfasts, elegant lunches and three-course dinners will mean you are well fed whilst staying at the end of the world.



Our chefs use the best South African produce to create meals that are full of flavour and sophisticated without being fussy. The wines come from a selection of the finest Cape vineyards, whilst the bread is freshly baked and the coffee freshly ground.

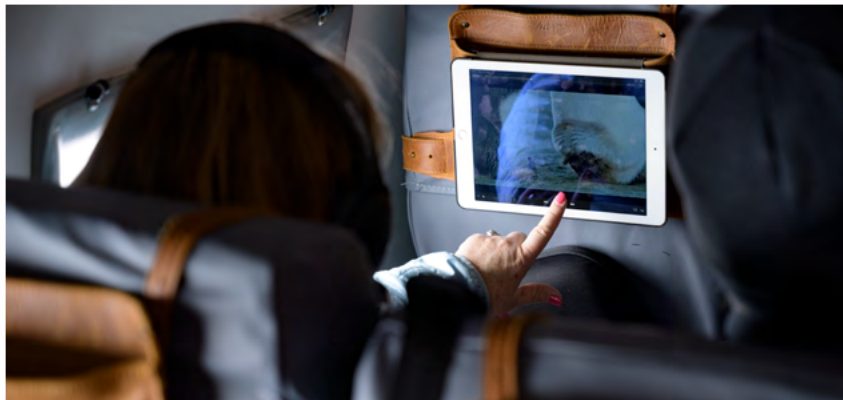


Our service is welcoming, personal and thoughtful, and takes into account each guest's dietary requirements.





Our Basler BT-67s are uprated conversions of the DC-3, specially equipped with the latest avionics for Antarctic operations and with skis for landing on snow and ice.



# TRAVEL WITHIN ANTARCTICA

WITH THE BASLER BT-67

Robb Report

*"Flights by a ski-plane to a massive Emperor-penguin colony and the Geographic South Pole make for lifetime memories."*



70° 38' 16" S 8° 15' 45" W

## EMPEROR PENGUIN COLONY







Your visit to the penguins begins with a 2.5-hour flight to Atka Bay, the site of the first episode of Sir David Attenborough's ground-breaking documentary *Seven Worlds, One Planet*. Here you'll see over 14,000 breeding pairs and their newly-hatched chicks, a spectacle full of noise and energy that is a favourite with wildlife watchers and photographers.

There are so few visitors to this colony that the chicks are unafraid of humans and often waddle close by. Mindful of our responsibility to the Antarctic environment and of IAATO guidelines, we keep at least 25m (80ft) from the penguins while taking in all the sights and sounds of this rare wildlife spectacle, which remains one of the greatest thrills on Earth!



*"What a privilege to witness this wildlife phenomenon.  
The Emperor Penguins are almost mystical, it was incredible."*  
Rina Tham, Author of internationally published *Lucky Number 9*





CLICK TO VIEW VIDEO OF EMPERORS



During the long dark winter, the mothers hunt for food while the fathers look after the egg. When spring returns, the egg hatches and the chick sits on its parents' feet to stay warm.



*"It is the most beautiful setting I have seen in all of my travels."*

Lewis Pugh, OIG - UN Patron of the Oceans



An aerial photograph of a massive glacier with a vibrant turquoise meltwater stream flowing through its crevasses. Several hikers are visible on a snow-covered ridge in the lower right, providing a sense of scale to the immense ice formation. The scene is captured in bright daylight, with sharp shadows and a clear blue sky.

## DAILY ACTIVITIES AT WHICHAWAY OASIS





CLICK TO VIEW VIDEO OF ICE TUNNEL



With only 12 guests on each adventure, our professional guides will ensure that you are always safe and well looked-after, and that you get the most out of your time.

Your activities can be as adrenaline-fuelled or relaxed as you like: not keen on climbing, fat biking or abseiling? Then perhaps a picnic followed by a sauna and a massage would suit. The choice is yours.







Condé Nast  
**Traveler**

*"The logistics that support this 12-guest refuge would test a space mission."*

Between rugged mountain ranges and spectacular frozen waves of ice, our guides will expand your horizons in this wonderland of discovery. Our philosophy is simple – do as much or as little as you like. After all, it's your adventure!



# WELLNESS

A trip to Antarctica is the perfect opportunity to rest, recharge and recover from the hustle and bustle of everyday life. Not only are our team ready to lead you through the landscapes of Antarctica, but they are also on hand to guide you in relaxation and meditation techniques.

Newly added for the 2021/22 season, our sauna and wellness pod are perched beside a serene freshwater lake, whose views will inspire you during daily meditation and yoga sessions.



*“Every once in a while, I think of the thousands of penguins, our home at Whichaway Camp, the food and the challenges I conquered. When my day gets beyond stressful... I smile!”*

Karen Gosling, Guest (2018)





Forbes

*"Antarctica, the safest place to visit in 2020 and beyond."*



## YOUR SAFETY

For all its beauty, Antarctica can be a challenging environment, with low temperatures, strong winds and high altitudes. We believe the best way to protect you is through our staff and we are absolutely uncompromising about the experience and expertise of our people.

All our mountain guides have completed the strenuous 5-year UIAGM qualification, while each camp has its own fully-qualified trauma doctor and accompanying medical kits. Our chief pilot has 10 years of experience flying in Antarctica with over 18,000 hours of logged flight time.

Tracking, satellite communications and mutual Search & Rescue agreements are all part of White Desert's comprehensive safety policies. Furthermore, by operating our own aircraft, we also have the speed and flexibility to arrange an evacuation back to Cape Town in the unlikely event that one should become necessary.





# ENVIRONMENT

White Desert believes that responsible tourism is a genuine force for good and supports Sir David Attenborough's stance on the transformative power of wilderness travel: *"No one will protect what they don't care about, and no one will care about what they have never experienced"*.



**Camp** - As a temporary eco-camp, our whole operation can be dismantled and removed without a trace.



**Carbon neutral** - White Desert was the first aviation operator in Antarctica to be entirely Carbon Neutral, a status the company has held since 2007.



**Waste management** - We keep waste to a minimum by repackaging all consumables before we bring them to Antarctica and then, at the end of the season, shipping all solid waste back to South Africa for recycling or responsible disposal.





# Robb Report

“A trip down south to the Seventh Continent is intense — which is something the Antarctica experts at White Desert know well.”

|                                     |
|-------------------------------------|
| GUESTS: 12 MAXIMUM                  |
| FITNESS: NO SPECIFIC LEVEL REQUIRED |
| FLIGHT TO ANTARCTICA: 5HRS          |
| FLIGHT TO PENGUINS: 2.5HRS EACH WAY |
| PRICE: \$58,000 pp                  |

## INCLUDED

1. Safety briefing (return transfers provided)
2. Return transfers for Antarctica flights
3. Return flight to Antarctica (inc. 30kg baggage allowance)
4. All accommodation, food and drink (including all alcohol) in Antarctica
5. All guiding fees, support of field guides and logistics staff
6. The use of certain items of polar clothing, as denoted on equipment list
7. Payment by White Desert Ltd of a ‘Carbon Tax’ for offsetting emissions created by all logistics associated with Antarctic travel

## EXCLUDED

1. Commercial flights to and from Cape Town, South Africa
2. Accommodation and meals whilst in Cape Town
3. Polar clothing (you will be sent a tailored kit list in advance of your trip to help you purchase the necessary items)
4. Comprehensive insurance cover (White Desert staff can advise you as to the appropriate cover required)
5. Additional expenses incurred in Cape Town due to any delay
6. Additional baggage costs over the agreed amount
7. Use of a satellite phone whilst in Antarctica



# FULL ITINERARY

DAY  
BEFORE  
DEPARTURE

White Desert will host a safety briefing in Cape Town. This is where we will check all your polar clothing and prepare you for your flight south.

DAY ONE

You fly over thousands of icebergs on our 5-hour flight across the Southern Ocean to Antarctica. During the flight, you enter the Polar Circle and the continuous daylight of the Antarctic summer.

After landing on the ancient blue ice of the runway, you will transfer to our camp at Whichaway and have the chance to stretch your legs on a gentle hike around the Oasis.

DAY TWO

Settle into Whichaway Oasis and do as much or as little as you like each day. Activities range from gentle treks to the incredible ice waves, summitting a nunatak, ice climbing and even abseiling!

After the day's activities you will hear a talk about the incredible life cycle of the Emperor Penguins in preparation for your visit the following day.

DAY THREE

You fly 2.5 hours across Antarctica on our BT-67 aircraft, enjoying immense views of the High Polar Plateau, before landing at the Emperor Penguin colony at Atka Bay.

Wrapped up in the sights and sounds of thousands of penguins, you will be among the very few who have ever witnessed such a spectacle, observing the real-life stars of *March of the Penguins*.

DAY FOUR

You spend the day exploring the ice waves below our camp, delving into the series of ice tunnels that are as surreal as they are beautiful.

Then you'll be off on an Arctic Truck safari, winding your way through the snow and ice to an incredible vantage point where you can take in the panoramic view over the waves that you have just explored.

DAY FIVE

An adventurous hike along a winding cliff face shows you stunning views of the extraordinary waves of ice that have been created over millennia by constant pressure from the ocean. Our world-class mountain guides will lead you on this challenging hike, ensuring your safety at all times on this unforgettable day.

DAY SIX

The flight out of Antarctica will be the last of your enduring Antarctic memories before you delve back into the vibrant energy of Africa. You will be transferred to your hotel where you will have a chance to relax and reflect on your Antarctic adventure!

This itinerary is entirely subject to weather conditions in Antarctica and is meant purely as a guide to what guests may expect day by day. The exact sequence of activities and the types of aircraft mentioned in this brochure may vary.





# • ADDITIONS TO YOUR TRIP

## ○ VIRGIN PEAK

Antarctica is truly the final frontier for mountaineering, with thousands of peaks reaching as high as 4,892m (16,000ft), many of them unnamed and most of them unclimbed. Take the opportunity to explore a mountain where no one has ever set foot before, led by UIAGM-qualified high mountain guides. Contact us to discuss your options!



## ○ AFRICAN ADVENTURES

Our home base in Cape Town isn't just the gateway to Antarctica, it is also a hub for a multitude of African experiences. From private safaris in Kruger National Park to visiting Victoria Falls or the Okavango Delta, White Desert can introduce you to the finest travel experiences in Africa. We'd be happy to make recommendations for you!



## ○ DOOR-TO-DOOR

To make your trip even smoother and to keep you away from busy crowds, we would be pleased to pick you up and drop you off at your door and to arrange private jet transportation to and from Cape Town. Our Door-to-Door service can also be arranged on an exclusive basis for up to 12 passengers.



## ○ EXCLUSIVE BOOKINGS

Catering to a wide range of fitness levels, White Desert's trips are perfect for families and friends - even across three generations. With a maximum group size of 12, exclusive bookings allow each element of your experience to be completely tailored, from the food and wine to the daily activities. If you book exclusively, White Desert would be pleased to include a photographer, interpreter or specialist chef, should you desire and subject to the Gulfstream's passenger capacity.



## ○ JET OWNERS CLUB

Wolf's Fang Runway is the only blue ice runway in Antarctic specifically designed for business jets. We can assist jet owners, subject to a number of operating conditions, with bringing their own aircraft into our runway and creating an entirely bespoke experience.





● White Desert team

# ABOUT WHITE DESERT

White Desert was founded in 2005 by husband and wife team Patrick & Robyn Woodhead, who hold four exploration world records between them. When White Desert began, visitors reached Antarctica almost exclusively by cruise ship, limiting them to the Antarctic Peninsula and its coastline. Instead, Patrick and Robyn wanted to introduce guests to the deep interior of the continent while offering them a level of hospitality and comfort more akin to a high-end Africa safari than a rugged polar expedition.

Receiving its operating permit from the British Foreign, Commonwealth & Development Office (FCDO), the company has grown year-on-year and is now comprised of 70 staff of 17 different nationalities during season, providing a unique and highly specialised skillset.

Antarctic travel is the only thing White Desert does. It's our passion, it's our mission and it's in our DNA.



● Safety briefing at the Silo Hotel in Cape Town





COME WITH US ON AN UNFORGETTABLE JOURNEY. COME EXPLORE.

[INFO@WHITE-DESERT.COM](mailto:INFO@WHITE-DESERT.COM) [CLICK FOR AVAILABLE DATES](#) +1 718 312 8653