



THE EXPLORERS ACADEMY

WHICHAWAY OASIS | ANTARCTICA
2021 - 2022

On this 6-day adventure, you will learn the skills of polar exploration from Ben Saunders - one of the most experienced and accomplished explorers of our time.

Amid towering mountain peaks, ice caves and iridescent blue ice rivers, you will undergo wilderness training whose emphasis is on fun and experience rather than hardship.

This is the perfect way to escape from it all and really connect with this wild landscape.

PRICE PER PERSON: US\$40,000

EXCLUSIVE CHARTER (12 PLACES): US\$480,000



7-Time Winner
World Travel Awards

WHITE DESERT & ANTARCTICA

For centuries, the Last Continent has held a special place in our imaginations, yet even now, long after the first explorers reached the South Pole, access to the interior of Antarctica is still only for the very few.

After a five-hour flight from Cape Town, South Africa, we bring you into the heart of Antarctica, a place that is both surreal and majestic. From iridescent ice tunnels to vertical spires of rock, from endless uninhabited horizons to oceans scattered with ice-bergs, this is a place unlike anywhere else on Planet Earth.

Established 15 years ago by record-breaking polar explorers, White Desert offers you an environmentally-conscious choice for luxury and adventure, sensitive to the incredible environment and animals that surround us.

Come with us on an unforgettable journey.
Come explore.

Play our 1-minute
introductory video





BEN SAUNDERS

Ben Saunders is a polar explorer, endurance athlete and motivational speaker who has covered more than 7,000km of Arctic and Antarctic terrain in the past two decades.

As the leader of the longest human-powered polar journey in history, Ben will impart his incredible knowledge of what it takes to survive in Antarctica, while teaching you the skills of a true Polar Explorer.

33° 56' 29" S 18° 27' 40" E

START POINT

CAPE TOWN, SOUTH AFRICA

Often tipped as one of the most beautiful cities in the world, Cape Town is home to award-winning vineyards and stunning ocean vistas.

We will host a safety briefing the day before your scheduled flight where our staff will explain all kit requirements, assist with any last-minute preparations and update you on the latest weather forecasts for Antarctica.





CAPE TOWN
SOUTH AFRICA

WHICHAWAY OASIS

WOLF'S FANG RUNWAY

GEOGRAPHIC SOUTH POLE

FLIGHTS

FLIGHT TO ANTARCTICA:
5 hours

FLIGHT FROM WOLF'S FANG
RUNWAY TO WHICHAWAY OASIS:
30 minutes

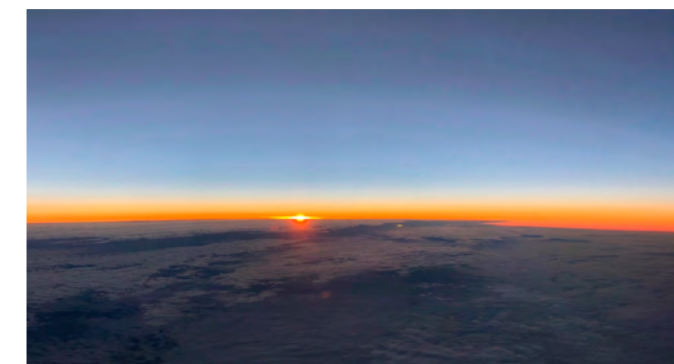
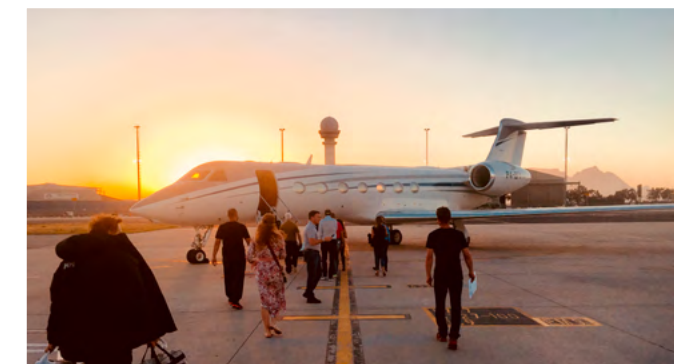


TRAVEL

SOUTH AFRICA TO ANTARCTICA

You travel in uncompromising comfort across the mighty Southern Ocean in a Gulfstream 550. During the five-hour flight, the African night turns to the Antarctic day as you soar over thousands of icebergs and pass into 24 hours of continuous sunshine.

Your destination: Wolf's Fang Runway.



WOLF'S FANG RUNWAY

Stepping onto the ice for the first time can literally take your breath away. The incredible vista of the Drygalski range offers an awe-inspiring start to your expedition.

You'll then board our ski-equipped BT-67 aircraft that takes you low over the mountains before heading north to our main luxury camp, Whichaway Oasis. Flight time: 30 mins.

CLICK TO VIEW LANDING ON WOLF'S FANG BLUE ICE RUNWAY



Cokpit of the Basler BT-67

As part of our responsibility towards conserving Antarctica, all emissions from our operations, including all flights to, from and within the continent, are offset by fully-accredited carbon-neutral schemes.



CLICK TO VIEW VIDEO OF CAMP



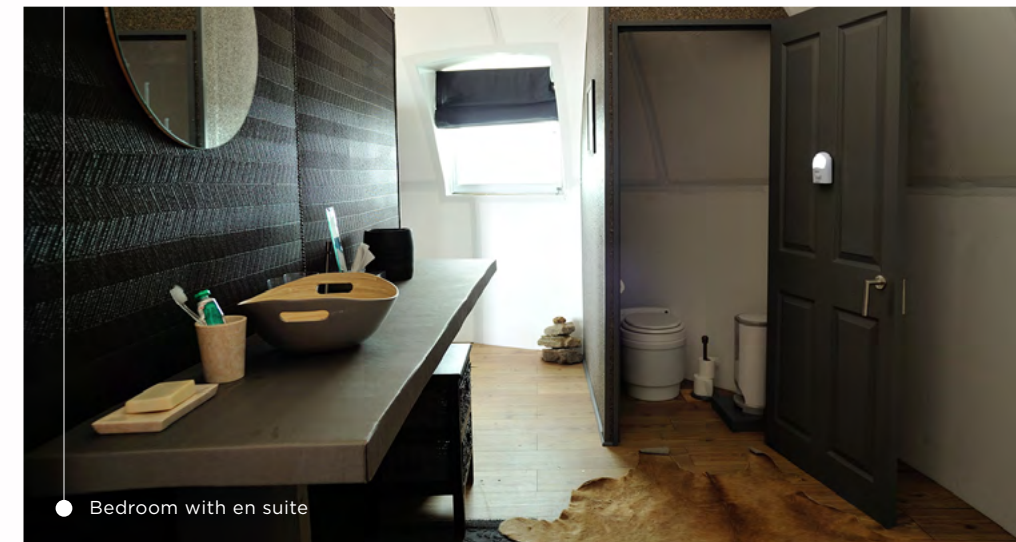
The Schirmacher Oasis, an ice-free plateau containing over 100 lakes, is the site of our luxury eco-camp “Whichaway”. The camp consists of hi-tech polar pods which look out across a magnificent, 60m (200ft) icefall. This will be your home-from-home for the next few days and a luxurious basecamp from which to go out on mini-expeditions.

70° 45' 49" S 11° 36' 59" E

WHICHAWAY OASIS

"Whichaway Camp offers the perfect balance between polar functionality and luxury camp comfort."

Rick Garratt, CEO, Home Choice



Our camp consists of seven heated and state-of-the-art bedroom pods that are designed for two guests in each. At just over 6m (20ft) in diameter, you'll find they are also spacious, with a writing desk, wash area and toilet.

For guests travelling separately, the pod can be partitioned for privacy.

● Explorer Ben Saunders details the next day's activities in the lounge



Condé Nast
Traveler

"Whichaway Oasis must count as one of the most exclusive stays in the world."



● Reception



The rest of the camp comprises a shower pod, kitchen and three centralised pods that make up the reception, lounge and dining room. This is where our experienced team of chefs, hosts and guides will take care of every detail for you, allowing you to focus on enjoying your adventure.

While the exterior of our pods is made from cutting-edge materials, the interiors have a relaxed, old-world feel that harks back to the golden age of Antarctic exploration.

Dining Room

"I never expected to find such delicious food and wine in such a remote place. The chef was nothing short of a miracle worker!"
Cathy Mackenzie, Guest



After a busy day of activities, you'll be sure to work up an appetite. Our hearty breakfasts, elegant lunches and three-course dinners will mean you are well fed whilst staying at the end of the world.




Our chefs use the best South African produce to create meals that are full of flavour and sophisticated without being fussy. The wines come from a selection of the finest Cape vineyards, whilst the bread is freshly baked and the coffee freshly ground.



Our service is welcoming, personal and thoughtful, and takes into account each guest's dietary requirements.

A full-page background image showing a person in a blue jacket and orange helmet climbing a massive, translucent blue ice wall. The person is using a rope and is positioned near the bottom right of the frame. The ice wall is composed of large, jagged blocks and has a highly textured, crystalline surface. The lighting is dramatic, with bright highlights on the ice and deep shadows in the crevices. The overall color palette is dominated by various shades of blue and teal.

POLAR ACTIVITIES

A person in a red jacket and yellow helmet is ice climbing a massive, translucent blue ice wall. A rope is visible running up the ice. To the right is a steep, layered rock cliff. The sky is clear blue.

Ice Climbing - Antarctica is the last frontier with many unclimbed peaks waiting to be conquered. Ben will demonstrate how to scale walls of ice in this most extraordinary environment.



Glacier Traverse - Learn glacier traverse skills using crampons and ice axes. Crevasses pose one of the great dangers of exploring in Antarctica and Ben will explain the basics of rope work and polar safety.



Arctic Trucks - The most effective and versatile vehicle in the polar regions is the Arctic Truck 6x6. You will learn the nuanced skills of handling one of these machines on the glaciers and rocks of the Schirmacher Oasis.



Crystal Caves - Should the weather turn, you'll find plenty of shelter in the ice caves. Explore a stunning network of caves and tunnels that are unique to this region.

Polar Nutrition – In this extreme environment your body will burn calories at a tremendous rate. Using the latest dehydrated food we will teach you to eat well despite the conditions.



Packing the Pulka - When man-hauling to the pole, your sled is your lifeline. Everything you need will have to fit inside your sled and Ben will teach you how to stay warm and comfortable for your night's camp out.



Polar Hydration – Staying hydrated is a critical discipline in the desert - and Antarctica is no exception so you'll learn to listen to your body during your traverses. And of course you'll have plenty to celebrate at the end of your trip!



Camp Out - The trip will culminate in a night camping out on the glacier, the perfect opportunity to put your polar skills to the test and to appreciate what it takes to be an explorer!



WELLNESS

After being out in the field with Ben each day, the sauna and wellness area of our camp will be the perfect antidote to help you recover. Nothing feels better than warming up in a sauna or getting a massage to alleviate those tired muscles!





Forbes *"Antarctica, the safest place to travel in 2020 and beyond."*

YOUR SAFETY

For all its beauty, Antarctica can be a challenging environment, with low temperatures, strong winds and high altitudes. We believe the best way to protect you is through our staff and we are absolutely uncompromising about the experience and expertise of our people.

All our mountain guides have completed the strenuous 5-year UIAGM qualification, while each camp has its own fully-qualified trauma doctor and accompanying medical kits. Our chief pilot has 10 years of experience flying in Antarctica with over 18,000 hours of logged flight time.

Tracking, satellite communications and mutual Search & Rescue agreements are all part of White Desert's comprehensive safety policies. Furthermore, by operating our own aircraft, we also have the speed and flexibility to arrange an evacuation back to Cape Town in the unlikely event that one should become necessary.



ENVIRONMENT

White Desert believes that responsible tourism is a genuine force for good and supports Sir David Attenborough's stance on the transformative power of wilderness travel: *"No one will protect what they don't care about, and no one will care about what they have never experienced"*.



Camp - As a temporary eco-camp, our whole operation can be dismantled and removed without a trace.



Carbon neutral - White Desert was the first aviation operator in Antarctica to be entirely Carbon Neutral, a status the company has held since 2007.



Waste management - We keep waste to a minimum by repackaging all consumables before we bring them to Antarctica and then, at the end of the season, shipping all solid waste back to South Africa for recycling or responsible disposal.



Robb Report

“A trip down south to the Seventh Continent is intense — which is something the Antarctica experts at White Desert know well.”

GUESTS: 12 MAXIMUM
FITNESS: BASIC LEVEL REQUIRED
FLIGHT TO ANTARCTICA: 5 HOURS
PRICE: US\$40,000 pp

INCLUDED

1. Safety briefing (return transfers provided)
2. Return transfers for Antarctica flights
3. Return flight to Antarctica (inc. 30kg baggage allowance)
4. All accommodation, food and drink (including all alcohol) in Antarctica
5. All guiding fees, support of field guides and logistics staff
6. The use of certain items of polar clothing, as denoted on equipment list
7. Payment by White Desert Ltd of a ‘Carbon Tax’ for offsetting emissions created by all logistics associated with Antarctic travel

EXCLUDED

1. Commercial flights to and from Cape Town, South Africa
2. Accommodation and meals whilst in Cape Town
3. Polar clothing (you will be sent a tailored kit list in advance of your trip to help you purchase the necessary items)
4. Comprehensive insurance cover (White Desert staff can advise you as to the appropriate cover required)
5. Additional expenses incurred in Cape Town due to any delay
6. Additional baggage costs over the agreed amount
7. Use of a satellite phone whilst in Antarctica

FULL ITINERARY

DAY
BEFORE
DEPARTURE

White Desert will host a safety briefing in Cape Town. This is where we will check all your polar clothing and prepare you for your flight south.

DAY ONE

You fly over thousands of icebergs on our 5-hour flight across the Southern Ocean to Antarctica, leaving the African night for the 24-hour daylight of the Antarctic summer.

After landing on the ancient blue ice of the runway, you'll transfer aboard our BT-67 skiplane to our camp at Whichaway, where you'll have the chance to get used to your crampons and polar equipment on a hike around the Oasis.

DAY TWO

Settle into Whichaway Oasis and take part in a range of activities hosted by Ben Saunders, including trekking, summiting a nunatak, ice climbing and even abseiling.

During your trip, you'll hear talks from our mountain guides about their world record-breaking expeditions as well as some of the lesser-known history of Antarctica.

DAY THREE

We'll spend the day exploring the blue river below our camp. The rivers form from seasonal glacial melt which transforms the waves into translucent blue ribbons running through the white ice waves.

Then you'll be off on an Arctic Truck safari, winding your way through the snow and ice to an incredible vantage point where you can take in the panoramic view over the waves that you have just explored.

DAY FOUR

Tonight we camp out! An opportunity to experience the reality of Antarctic exploration in one of the most remote campsites on Earth. We will cross-country ski (or hike) into the mountains, passing dramatic wind scoops and iridescent blue ice.

As you zip the door of your tent closed, you will experience what it is like to be a true explorer on the Antarctic glacier.

DAY FIVE

We'll return to camp via an adventurous hike along a winding cliff face which affords guests stunning views of the extraordinary waves of ice that have been created over millennia by constant pressure from the ocean.

Our world-class mountain guides will lead you on this challenging hike, ensuring your safety at all times on this unforgettable day.

DAY SIX

The flight out of Antarctica will be the last of your enduring memories of the great White Continent before you dive back into the vibrant energy of Africa.

You will be transferred to your hotel where you will have a chance to relax and reflect on your Antarctic adventure!

This itinerary is entirely subject to weather conditions in Antarctica and is meant purely as a guide to what guests may expect day by day. The exact sequence of activities and the types of aircraft mentioned in this brochure may vary.



• ADDITIONS TO YOUR TRIP

○ VIRGIN PEAK

Antarctica is truly the final frontier for mountaineering, with thousands of peaks reaching as high as 4,892m (16,000ft), many of them unnamed and most of them unclimbed. Take the opportunity to explore a mountain where no one has ever set foot before, led by UIAGM-qualified high mountain guides. Contact us to discuss your options!



○ AFRICAN ADVENTURES

Our home base in Cape Town isn't just the gateway to Antarctica, it is also a hub for a multitude of African experiences. From private safaris in Kruger National Park to visiting Victoria Falls or the Okavango Delta, White Desert can introduce you to the finest travel experiences in Africa. We'd be happy to make recommendations for you!



○ DOOR-TO-DOOR

To make your trip even smoother and to keep you away from busy crowds, we would be pleased to pick you up and drop you off at your door and to arrange private jet transportation to and from Cape Town. Our Door-to-Door service can also be arranged on an exclusive basis for up to 12 passengers.



○ EXCLUSIVE BOOKINGS

Catering to a wide range of fitness levels, White Desert's trips are perfect for families and friends - even across three generations. With a maximum group size of 12, exclusive bookings allow each element of your experience to be completely tailored, from the food and wine to the daily activities. If you book exclusively, White Desert would be pleased to include a photographer, interpreter or specialist chef, should you desire and subject to the Gulfstream's passenger capacity.



○ JET OWNERS CLUB

Wolf's Fang Runway is the only blue ice runway in Antarctic specifically designed for business jets. We can assist jet owners, subject to a number of operating conditions, with bringing their own aircraft into our runway and creating an entirely bespoke experience.



● White Desert team

ABOUT WHITE DESERT

White Desert was founded in 2005 by husband and wife team Patrick & Robyn Woodhead, who hold four exploration world records between them. When White Desert began, visitors reached Antarctica almost exclusively by cruise ship, limiting them to the Antarctic Peninsula and its coastline. Instead, Patrick and Robyn wanted to introduce guests to the deep interior of the continent while offering them a level of hospitality and comfort more akin to a high-end Africa safari than a rugged polar expedition.

Receiving its operating permit from the British Foreign, Commonwealth & Development Office (FCDO), the company has grown year-on-year and is now comprised of 70 staff of 17 different nationalities during season, providing a unique and highly specialised skillset.

Antarctic travel is the only thing White Desert does. It's our passion, it's our mission and it's in our DNA.



● Safety briefing at the Silo Hotel in Cape Town



COME WITH BEN ON AN UNFORGETTABLE JOURNEY. COME EXPLORE.

INFO@WHITE-DESERT.COM [CLICK FOR AVAILABLE DATES](#) +1 718 312 8653