



# WHITE DESERT

ANTARCTICA

*Est. 2005*



# CELEBRATING 20 YEARS

*‘White Desert is a marvel of vision and logistics, like something out of a James Bond film. You can’t believe someone actually made this happen; it seems so far-fetched.’*

— VOGUE

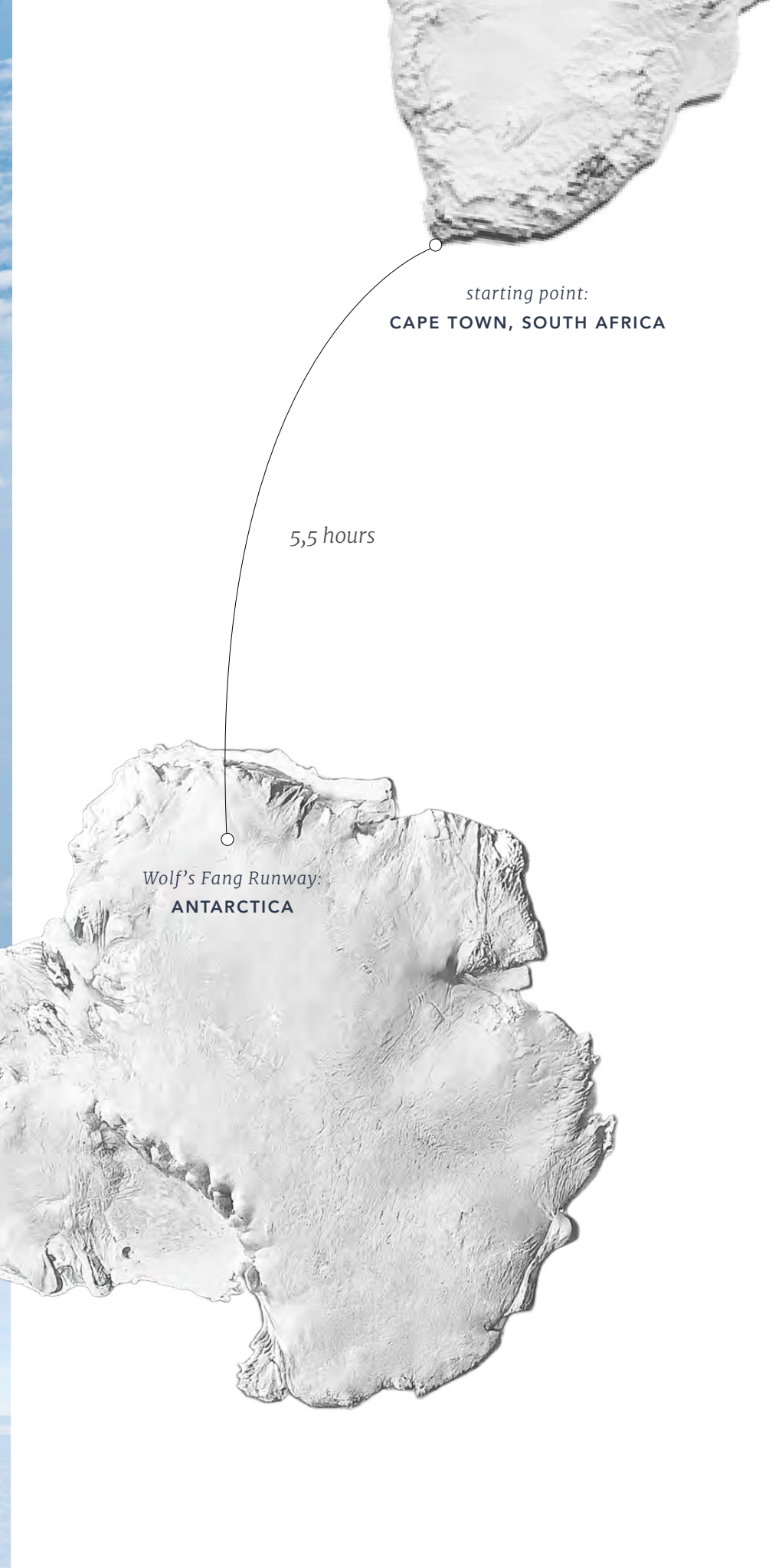


# TRAVEL TO THE LAST CONTINENT

White Desert operates for just 11 weeks a year — Antarctic summer — when the conditions are most hospitable.

In a feat of engineering, your journey to the 7th continent is aboard a “heavy” — an Airbus A340 plane commissioned by White Desert. This plane allows us to transport guests, much-needed supplies and cargo.

During the flight, you’ll soar above thousands of icebergs and over the ice shelf, landing in 24 hours of continuous sun, where time is just a concept.





# ACCOMMODATION

70° 48' 00" S 11° 23' 00" E  
WHICHAWAY CAMP



71° 32' 47" S 8° 50' 11" E  
ECHO BASE





# WHICHAWAY CAMP

*An Ode to Explorers Past*

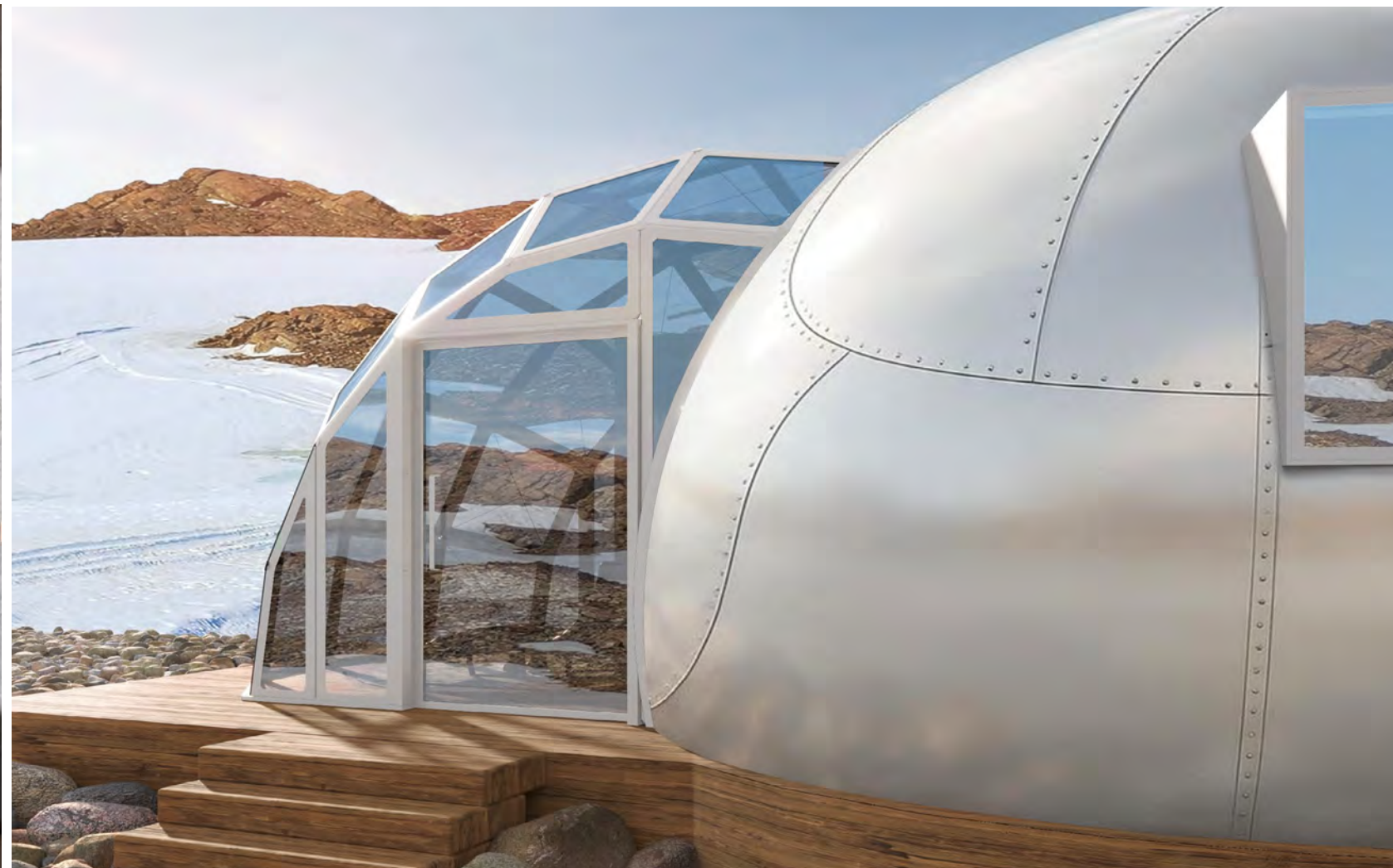


*Click to discover WHICHAWAY*



Our flagship camp, Whichaway is so named due to our Founder getting lost in the area and wasn't sure which-a-way to go!

While most of Antarctica is covered in ice, Whichaway is on a rare rocky outcrop encircled by an enormous cliff of iridescent blue ice. The six bedroom pods are warm and elegant, while the communal spaces provide the perfect base for meals, cocktail hours, and relaxation between activities.



## WHICHAWAY PODS

- ~ Designed specifically to withstand the harsh environment
- ~ All individually heated
- ~ Each pod has a wash area, toilet and private shower
- ~ For guests travelling independently, the beds are partitioned for privacy





The rest of the camp comprises of the Compass Lounge: three centralised pods that make up the reception, lounge and dining room. An experienced team of chefs, hosts and guides takes care of every detail for guests, allowing them to focus on enjoying their adventure. While the exterior of the pods is made from cutting-edge materials, the interiors have a relaxed, old-world feel reminiscent of the golden age of Antarctic exploration.



# ECHO BASE

*Inspired by astronauts. Used by explorers.*



*Click to discover ECHO*



Echo feels like stepping off planet Earth and entering a galaxy far, far away...

Surrounded by some of the planet's most spectacular scenery, Echo's distinctive pods look more suited to a colony on Mars. Inspired by astronauts and used by explorers, each of the six heated sleeping pods feature floor-to-ceiling windows. There is no more dramatic landscape to wake up to, as each room overlooks the lunar-like vistas beyond.



## ECHO PODS

- ~ Designed specifically to withstand the harsh environment
- ~ All individually heated
- ~ Each pod has a wash area and toilet
- ~ For guests travelling independently, the beds are partitioned for privacy





The rest of the camp comprises the shower pod and the Cosmos; the reception, lounge, library and dining rooms. These form the ideal space to enjoy meals, cocktails and the Anthony James art installation. Here, an experienced team of chefs, hosts and guides takes care of every detail for guests, allowing them to focus on enjoying their adventure.



# WELLNESS

We offer our guests several opportunities to relax and rejuvenate the mind, body and spirit. Each camp has a sauna and cold plunge for contrast therapy as well as a dome for yoga, meditation, or a light workout. In addition, a full-time Physical Therapist is stationed at each camp for daily massages and other treatments after a full day of adventure.



SAUNA



MASSAGE



THE DOME





## FINE DINING

Despite the remoteness of the destination, guests will enjoy artfully crafted cuisine throughout their stay. Meals are prepared to the highest culinary standards and use the freshest ingredients from locally sourced South African vendors.

White Desert procures award-winning wines from Cape Town's celebrated winelands, the ideal complement to elegant three-course dinners. When necessary, the chef will craft the menu to meet each guest's dietary requirements.





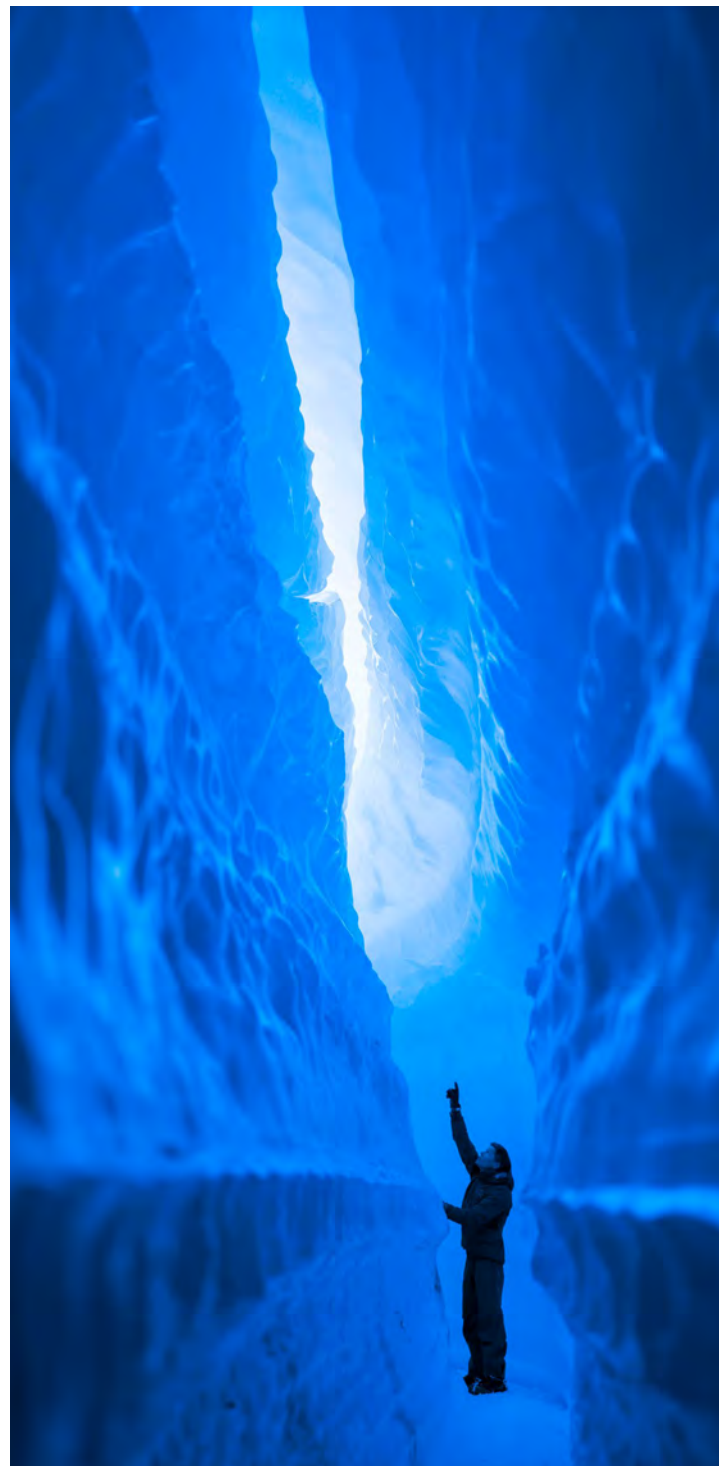
# DAILY ACTIVITIES AROUND CAMP

## ABSEILING



## ICE TUNNELS

*November - December*



## ICE WAVES



## ROCK CLIMBING



## FAT BIKING





GLACIER HIKES



ICE CAVES



ICE CLIMBING



BLUE RIVERS  
*Late January*



NUNATAK HIKE





# TRAVEL WITHIN ANTARCTICA

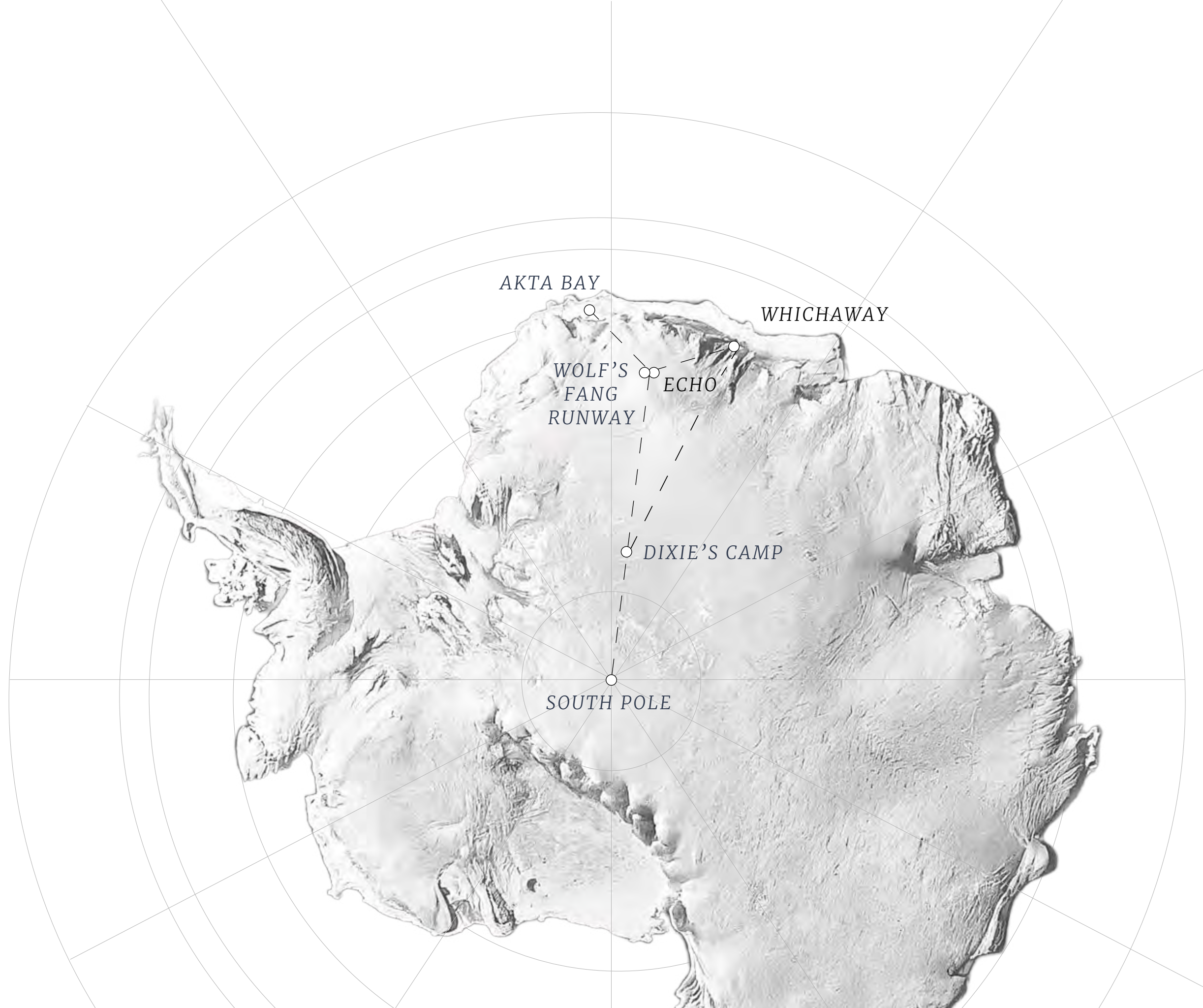
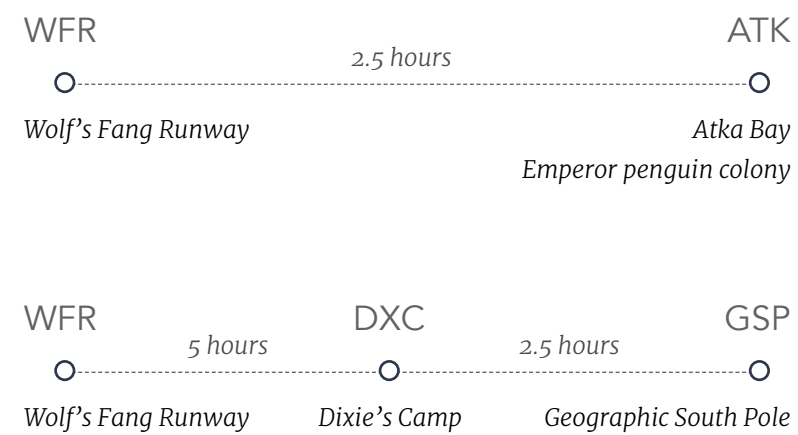
The Basler BT-67 is a versatile and durable aircraft that can land on snow and ice. It has a wide cabin and extended range and is used for flying in the interior of Antarctica, most notably to the South Pole and Emperor Penguins.

We have two identical aircraft and the crew are highly experienced in polar operations. Our chief pilot has over 10 seasons of Antarctic experience and has spent many hours cruising the high polar plateau.





## FLIGHT TIMES





# THE EMPEROR PENGUINS

*‘Not only will you enjoy the soul-stirring scene of a 1,000-plus colony of bumbling, chirpy penguins on Akta Bay, but you’ll also get to experience what only about 500 tourists achieve per year: a journey to the geographic nadir of Mother Earth.’*

— Condé Nast Traveller







NOVEMBER

Thousands of fluffy chicks begin to step off their parents' feet

COLONY VISIT

Your visit to the penguins begins with a 2.5-hour flight to Atka Bay. At the colony's height in November/December, you'll see over 12,000 adults and their newly hatched chicks — a spectacle full of noise and energy that is a must with wildlife enthusiasts and photographers. There are so few visitors to this inland colony that the chicks are unafraid of humans and often waddle close by. Mindful of our responsibility to the wildlife and of IAATO guidelines, we keep at least 5m (16.4ft) from the Penguins. Looking in every direction, all you'll see is a vast icy expanse contrasting the penguins' shimmering feathers.

DECEMBER

As they grow, the chicks begin to lose their down feathers



JANUARY

Late in the month the colony begins to return to the sea



# THE SOUTH POLE





# 90° SOUTH

At the heart of the White Continent lies the South Pole, one of only two stationary points on this rotating Earth!

At exactly 90 degrees latitude, you can walk around the world in only a few paces and marvel that there is no more East, West or South — the only direction is North!

Reaching the South Pole is considered one of the greatest feats of human exploration. Still today, fewer than 500 people a year reach the destination.







It is a total of 2,400km (1,500mi) from our main camps to the South Pole. The first part of the journey is a 5-hour flight to Dixie's Camp, our expedition camp. Flying 3,000m (10,000ft) above the ice, your view is sensational as we cross the High Polar Plateau.

We stop to refuel and then continue on another 2 hours to the South Pole itself — the very lowest point on the Earth. Setting foot at 90°S still remains the holy grail for many explorers.

After a few hours at the Pole, we fly back to Dixie's Camp at 83°S, to rest overnight and to join the very few who have ever spent a night in the beauty of the High Polar Plateau. There is a true sense of remoteness at Dixie's where, for an uninterrupted 360 degrees the white horizon meets the pure blue sky.

Enjoy a warm meal reflecting on the day and fall asleep knowing you're in one of the wildest places on Earth, a place rarely visited and still vastly unexplored.



# YOUR SAFETY, OUR PRIORITY

For all its beauty, Antarctica can be a challenging environment, with low temperatures, strong winds and high altitudes. We know the best way to protect you is with specialist staff. We have over 100 team members on ice, and we are uncompromising about the experience and expertise of our people. You can trust them to keep you safe on every step of your journey.

All our mountain guides have completed the strenuous 5-year UIAGM qualification, while each camp has its own fully qualified and equipped wilderness doctor.. Our chief pilot has over 10 years of experience flying in Antarctica with over 18,000 hours of logged flight time.

Tracking, satellite communications and mutual Search & Rescue agreements are all part of White Desert's comprehensive safety policies.

Furthermore, by operating our own aircraft, we also have the speed and flexibility to arrange an evacuation back to Cape Town in the unlikely event that one should become necessary.





# SOUTH POLE & EMPERORS SAMPLE ITINERARY



## PRE DEPARTURE

White Desert hosts a mandatory **safety briefing** in Cape Town. Our Guest Experience team will personally check your kit & polar clothing to prepare for your flight south.

*This itinerary is entirely subject to weather conditions in Antarctica and is meant purely as a guide to what guests may expect day by day. The exact sequence of activities and the types of aircraft mentioned in this brochure may vary. Antarctica is a bucket list trip for a reason – Mother Nature reigns supreme here, that’s what makes it a true adventure.*

## DAY 1

Soar across ice-cloaked oceans on a 5.5-hour flight from Cape Town. Cross into the Polar Circle and bask in endless daylight. Land on a blue-ice runway, then toast your arrival at Echo with cocktails chilled by 10,000-year-old Antarctic ice.

## DAY 2

Curate your perfect day: from yoga, massages, and gentle hikes to abseiling and summiting a nunatak. Or, slow down and listen to our explorer team’s tales of lesser-known Antarctic history and record-breaking feats beneath the endless southern skies.

## DAY 3

Fly 2.5 hours across dazzling landscapes to Atka Bay. Walk among resilient Emperor penguins; majestic, rare, and utterly unforgettable. Very few will ever witness such a scene in the wild heart of Antarctica.

## DAY 4

Hike above the ice sheet to sweeping views of untouched peaks. Enjoy a champagne picnic, then venture further with your guide to a breathtaking lookout. Every step reveals the vast, silent beauty that defines this polar realm.

## DAY 5

The South Pole awaits. Board our Basler aircraft and fly over vast mountain ranges. After refuelling at Dixie’s Camp, land at the Pole and stand where explorers dreamt to be. Capture the moment, stamp your passport, and overnight like the pioneers.

## DAY 6

Awaken under canvas on the High Polar Plateau. After breakfast, fly back to Echo, savouring the scale and solitude from above. A celebratory three-course dinner and champagne await your return, your triumph toasted beneath Antarctic skies.

## DAY 7

Venture along a dramatic cliff-side trail with panoramic views of the last true wilderness. Led by IFMGA mountain guides, this challenging hike promises awe, exhilaration, and a deeper connection to Antarctica’s untamed spirit.

## DAY 8

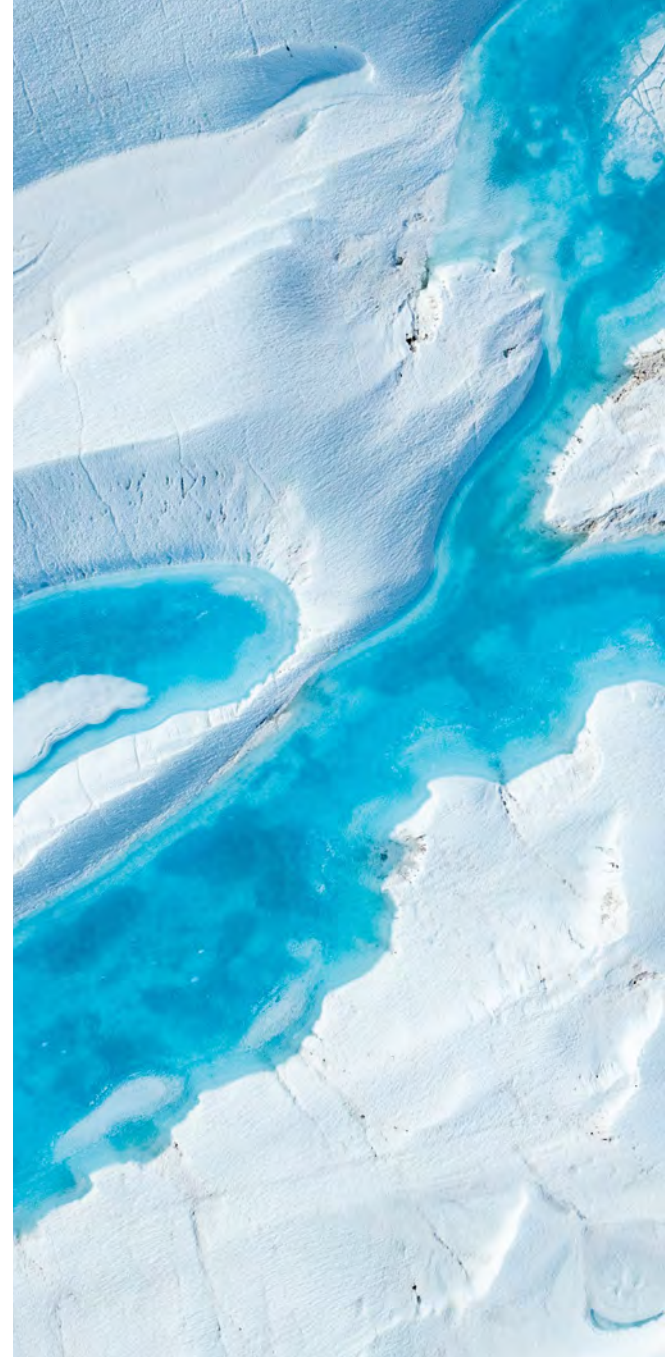
The flight out of Antarctica will be the last of your enduring memories of the great White Continent before you dive back into the vibrant energy of Africa. You will be transferred to your hotel where you will have a chance to relax and reflect on your Antarctic adventure!



# SUSTAINABILITY

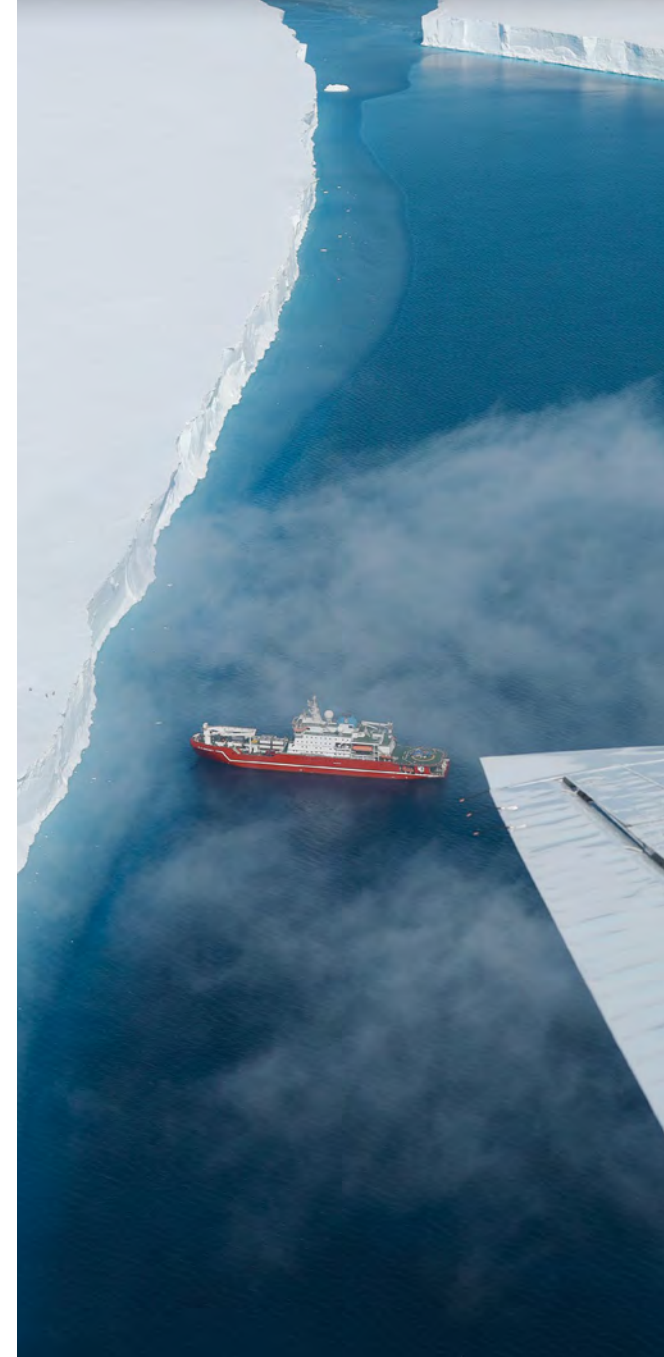
White Desert believes that responsible tourism is a genuine force for good. We support Sir David Attenborough’s stance on the transformative power of first-hand travel knowledge: *‘No one will protect what they don’t care about, and no one will care about what they have never experienced’*.

Mindful of the delicate Antarctic environment, our experiences are designed to leave no trace on the glacial landscape. Sustainable practices are implemented across every aspect of our operation. There are few places on earth that can provide such potential for personal growth and a change in perspective — simply through visiting. Our guests often leave Antarctica forever changed, returning home as ambassadors for our planet.



## CARBON NEUTRAL

White Desert was the first aviation operator in Antarctica to be entirely Carbon Neutral, a status the company has held since 2007. Your entire trip with us is fully offset.



## WASTE MANAGEMENT

We minimise waste by repackaging all consumables before bringing them to Antarctica. At season’s end, all solid waste is shipped back to South Africa for recycling or responsible disposal.



## WHITE DESERT FOUNDATION

The new White Desert Foundation is committed to tackling climate change through supporting scientific research in Antarctica as well as investing in cutting-edge Blue Carbon initiatives in South Africa.



# 20 YEARS OF ANTARCTIC OPERATIONS

Established in 2005, White Desert now employs over 150 people from 18 different nationalities, including doctors, pilots, physiotherapists, chefs, mechanics, engineers and IFMGA high-mountain guides.

The on-ice infrastructure now includes two Basler BT-67s, one Twin Otter, 10 Snow Groomers, 3 Arctic Trucks, 22 Skidoos, and a 216-panel solar sled farm offering a seamless guest experience in one of the most remote environments on Earth.



**2002**  
Patrick completes his first World Record expedition in Antarctica: The youngest and fastest team to reach the South Pole.

**2005**  
White Desert’s first guests arrive in Antarctica flying in the back of an old Russian cargo plane, landing at the Russian Science Base.

**2012**  
Whichaway Camp opens with the first iteration of the unique pod-style accommodation.



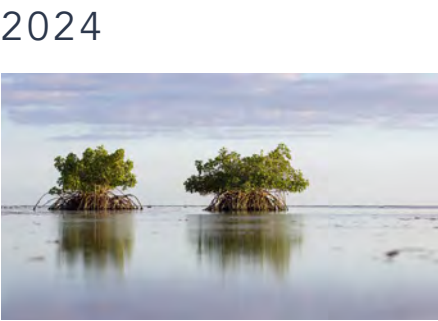
The camp now serves up to four groups of guests in a season.



**2016**  
The British Foreign Office grants permission for White Desert to reopen the ice runway known today as Wolf’s Fang. White Desert’s first ski-equipped Basler BT-67 arrives at Wolfs Fang Runway.



**2021**  
The first to fly large commercial aircraft into Antarctica — an Airbus A340-300 — comes to Wolf’s Fang Runway...



**2024**  
White Desert launches its own foundation focussed on Blue Carbon projects.

**2004**  
During Patrick’s second World Record trip, the idea for White Desert was born.



**2007**  
White Desert obtains carbon neutral certification, offsetting all operational emissions — and continues the practice to this day.



**2015**  
The team discovers an abandoned Norwegian ice runway called Blue One, which has the ideal characteristics for a private runway...

**2017**  
White Desert completes 25 intercontinental flights using a Gulfstream 550; now offers exclusive flights to the Atka Bay penguin colony.



**2022**  
Echo Base opens. White Desert becomes the first Antarctic operator to trial Sustainable Aviation Fuel on the continent.



**2025**  
Whichaway will reopen with glass conservatories and private showers in each pod.



## AS FEATURED IN...

**TRAVEL & LEISURE:**  
*Global Vision Awards 2025*



**TIME MAGAZINE:**  
*World's Greatest Places 2024*



**CONDÉ NAST TRAVELLER:**  
*Readers Choice Awards 2023 & 2024*







## COME EXPLORE

ENQUIRE NOW



*‘Our visit to Antarctica and the South Pole was a signature thrill of a lifetime. We were awed to stand at the bottom of the world and experience a beauty and remoteness that is more physical than any other place we have visited on the planet.*

*White Desert’s world-class team provided very high standards of safety, quality, and delivery. Most importantly, we were impressed by the stewardship of the entire White Desert team to preserve this very unique place by helping build a growing ecosystem of science and sustainable tourism.’*

— Scott & Kathryn E.